



DEPARTMENT OF REGULATORY AND ECONOMIC RESOURCES (RER)
BOARD AND CODE ADMINISTRATION DIVISION

MIAMI-DADE COUNTY, FLORIDA
PRODUCT CONTROL SECTION
11805 SW 26 Street, Room 208
T (786) 315-2590 F (786) 315-2599
www.miamidade.gov/economy

NOTICE OF ACCEPTANCE (NOA)

Enviralum Industries, Inc.
5100 NW 72nd Avenue
Miami, FL 33166

SCOPE:

This NOA is being issued under the applicable rules and regulations governing the use of construction materials. The documentation submitted has been reviewed and accepted by Miami-Dade County RER-Product Control Section to be used in Miami-Dade County and other areas where allowed by the Authority Having Jurisdiction (AHJ).

This NOA shall not be valid after the expiration date stated below. The Miami-Dade County Product Control Section (In Miami-Dade County) and/or the AHJ (in areas other than Miami-Dade County) reserve the right to have this product or material tested for quality assurance purposes. If this product or material fails to perform in the accepted manner, the manufacturer will incur the expense of such testing and the AHJ may immediately revoke, modify, or suspend the use of such product or material within their jurisdiction. RER reserves the right to revoke this acceptance, if it is determined by Miami-Dade County Product Control Section that this product or material fails to meet the requirements of the applicable building code.

This product is approved as described herein, and has been designed to comply with the Florida Building Code, including the High Velocity Hurricane Zone.

DESCRIPTION: Series "ENV-350" Inswing Aluminum Entrance Door – L.M.I.

APPROVAL DOCUMENT: Drawing No. **W12-38**, titled "Series ENV-350 Inswing Entrance Door (L.M.I.)", sheets 1 through 10 of 10, dated 07/10/12, prepared by Al-Farooq Corporation, signed and sealed by Javad Ahmad, P.E., bearing the Miami-Dade County Product Control Approval stamp with the Notice of Acceptance number and approval date by the Miami-Dade County Product Control Section.

MISSILE IMPACT RATING: Large and Small Missile Impact Resistant

LABELING: Each unit shall bear a permanent label with the manufacturer's name or logo, city, state, model/series, and following statement: "Miami-Dade County Product Control Approved", unless otherwise noted herein.

RENEWAL of this NOA shall be considered after a renewal application has been filed and there has been no change in the applicable building code negatively affecting the performance of this product.

TERMINATION of this NOA will occur after the expiration date or if there has been a revision or change in the materials, use, and/or manufacture of the product or process. Misuse of this NOA as an endorsement of any product, for sales, advertising or any other purposes shall automatically terminate this NOA. Failure to comply with any section of this NOA shall be cause for termination and removal of NOA.

ADVERTISEMENT: The NOA number preceded by the words Miami-Dade County, Florida, and followed by the expiration date may be displayed in advertising literature. If any portion of the NOA is displayed, then it shall be done in its entirety.

INSPECTION: A copy of this entire NOA shall be provided to the user by the manufacturer or its distributors and shall be available for inspection at the job site at the request of the Building Official. This NOA consists of this page 1 and evidence pages E-1 and E-2, as well as approval document mentioned above.

The submitted documentation was reviewed by **Manuel Perez, P.E.**



MP
9/14/12

NOA No. 12-0713.10
Expiration Date: September 20, 2017
Approval Date: September 20, 2012
Page 1

NOTICE OF ACCEPTANCE: EVIDENCE SUBMITTED

A. DRAWINGS

1. Manufacturer's die drawings and sections.
2. Drawing No. **W12-38**, titled "Series ENV-350 Inswing Entrance Door (L.M.I.)" sheets 1 through 10 of 10, dated 07/10/12, prepared by Al-Farooq Corporation, signed and sealed by Javad Ahmad, P.E.

B. TESTS


1. Test reports on:
 - 1) Air Infiltration Test, per FBC, TAS 202-94
 - 2) Uniform Static Air Pressure Test, Loading per FBC TAS 202-94
 - 3) Water Resistance Test, per FBC, TAS 202-94
 - 4) Forced Entry Test, per FBC 2411.3.2.1, and TAS 202-94
 - 5) Large Missile Impact Test per FBC, TAS 201-94
 - 6) Cyclic Wind Pressure Loading per FBC, TAS 203-94along with marked-up drawings and installation diagram of an outswing aluminum double entrance door, prepared by Fenestration Testing Laboratory, Inc., Test Report No. **FTL-6920**, dated 05/19/12, signed and sealed by Marlin D. Brinson, P.E. with addendum letters dated 09/06/12 and 09/12/12, signed by Manny Sanchez, CEO
2. Test reports on:
 - 1) Air Infiltration Test, per FBC, TAS 202-94
 - 2) Uniform Static Air Pressure Test, Loading per FBC TAS 202-94
 - 3) Water Resistance Test, per FBC, TAS 202-94
 - 4) Large Missile Impact Test per FBC, TAS 201-94
 - 5) Cyclic Wind Pressure Loading per FBC, TAS 203-94
 - 6) Drop Test per ANSI Z97.1-2009along with marked-up drawings and installation diagram of an aluminum window wall system, prepared by Fenestration Testing Laboratory, Inc., Test Report No. **FTL-6678**, dated 03/20/12, and addendum letter dated 08/23/12, all signed and sealed by Marlin D. Brinson, P.E.

C. CALCULATIONS

1. Anchor verification calculations and structural analysis, complying with FBC-2010, prepared by Al-Farooq Corporation, dated 06/18/12 and 09/14/12, signed and sealed by Javad Ahmad, P.E.
2. Glazing complies with ASTM E1300-04

D. QUALITY ASSURANCE

1. Miami-Dade Department of Regulatory and Economic Resources (RER).


Manuel Perez, P.E.
Product Control Examiner
NOA No. 12-0713.10
Expiration Date: September 20, 2017
Approval Date: September 20, 2012

Enviralum Industries, Inc.

NOTICE OF ACCEPTANCE: EVIDENCE SUBMITTED

E. MATERIAL CERTIFICATIONS


1. Notice of Acceptance No. **11-0624.02** issued to **E.I. DuPont DeNemours & Co., Inc.** for their "**DuPont SentryGlas® Interlayer**" dated 08/25/11, expiring on 01/14/17.
2. Notice of Acceptance No. **11-0624.01** issued to **E.I. DuPont DeNemours & Co., Inc.** for their "**DuPont Butacite® PVB Interlayer**" dated 09/08/11, expiring on 12/11/16.

F. STATEMENTS

1. Statement letter of conformance, complying with FBC-2010, and of no financial interest, dated July 12, 2012, issued by Al-Farooq Corporation, signed and sealed by Javad Ahmad, P.E.
2. Testing Proposal No. **10-1236** issued by Product Control, dated 12/20/10, revised on 01/05/11, signed by Manuel Perez, P.E.

G. OTHER

1. None.


Manuel Perez, P.E.
Product Control Examiner
NOA No. 12-0713.10
Expiration Date: September 20, 2017
Approval Date: September 20, 2012

**SERIES ENV-350
ALUMINUM INSWING ENTRANCE DOOR**

DOORS NOT APPROVED FOR INSTALLATIONS WHERE WATER INFILTRATION RESISTANCE IS REQUIRED.

THESE DOORS MAY BE USED IN CONJUNCTION WITH MIAMI-DADE COUNTY APPR'D LARGE MISSILE IMPACT RESISTANT STOREFRONT SYSTEM. LOWER DESIGN PRESSURE FROM DOOR OR STOREFRONT APPROVAL WILL APPLY TO ENTIRE SYSTEM.

CODE REQUIREMENTS FOR SAFEGUARDS MUST BE OBSERVED.

THIS PRODUCT HAS BEEN DESIGNED AND TESTED TO COMPLY WITH THE REQUIREMENTS OF THE FLORIDA BUILDING CODE INCLUDING HIGH VELOCITY HURRICANE ZONE (HVHZ).

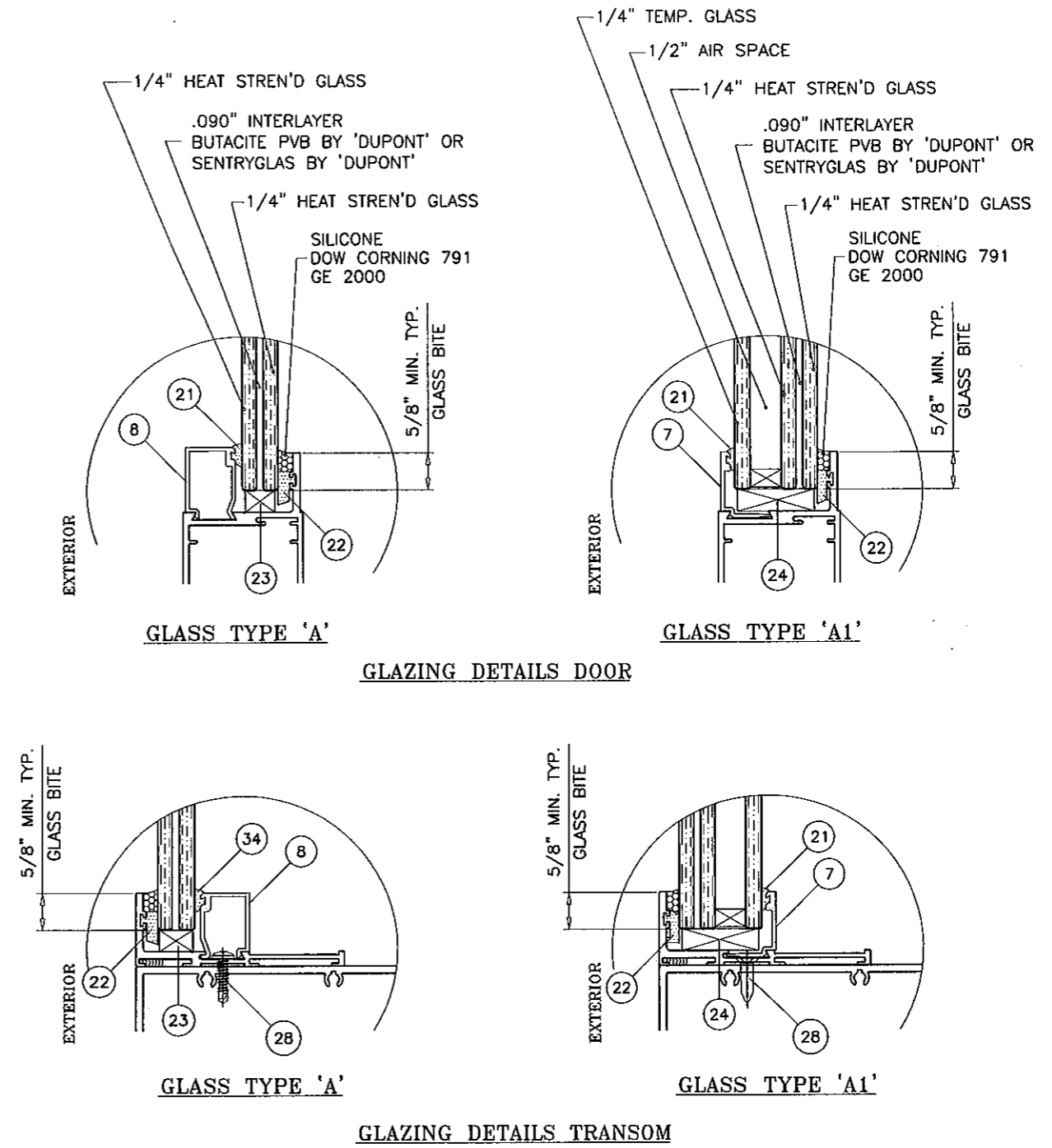
WOOD BUCKS BY OTHERS, MUST BE ANCHORED PROPERLY TO TRANSFER LOADS TO THE STRUCTURE.

ANCHORS SHALL BE AS LISTED, SPACED AS SHOWN ON DETAILS, ANCHORS EMBEDMENT TO BASE MATERIAL SHALL BE BEYOND WALL DRESSING OR STUCCO.

ANCHORING OR LOADING CONDITIONS NOT SHOWN IN THESE DETAILS ARE NOT PART OF THIS APPROVAL.

A LOAD DURATION INCREASE IS USED IN DESIGN OF ANCHORS INTO WOOD ONLY.

MATERIALS INCLUDING BUT NOT LIMITED TO STEEL/METAL SCREWS, THAT COME INTO CONTACT WITH OTHER DISSIMILAR MATERIALS SHALL MEET THE REQUIREMENTS OF THE FLORIDA BLDG. CODE SECTION 2003.8.4.



DOORS ARE RATED FOR LARGE & SMALL MISSILE IMPACT. SHUTTERS ARE NOT REQUIRED.

Engr: JAVAD AHMAD
CIVIL
FLA. PE # 70592
C.A.N. 3538

SEP 11 2012

Approved as complying with the
Florida Building Code
Date Sept. 20 2012
NOA# 1210713.10
Miami Dade Product Control
By Manuel Perez

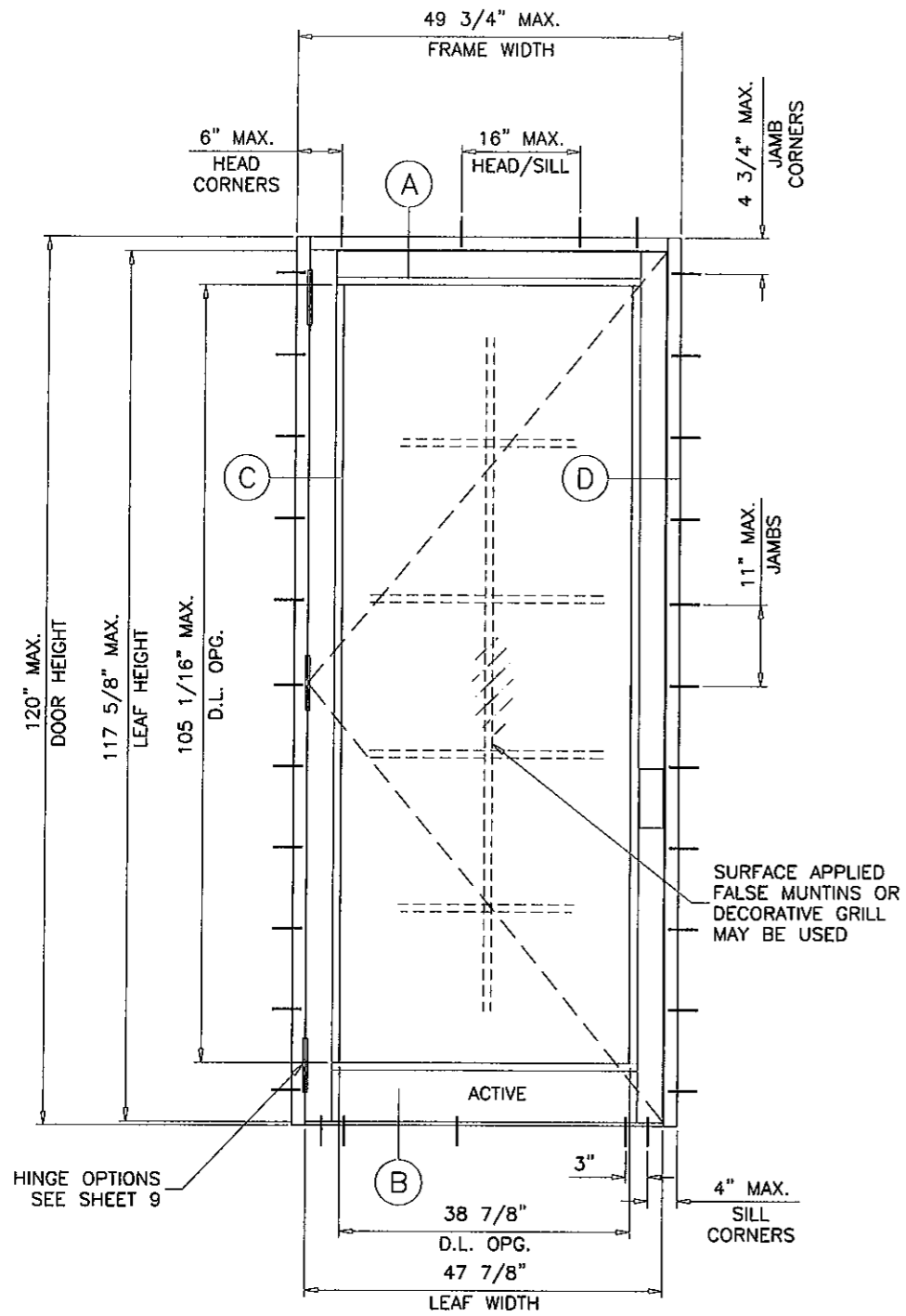
af c
AL-FAROOQ CORPORATION
ENGINEERS & PRODUCT DEVELOPMENT
1235 S.W. 87 AVE
MIAMI, FLORIDA 33174
TEL. (305) 264-8100 FAX. (305) 262-6978
COMP-ANL\W12-38ENV

SERIES ENV-350 INSWING ENTRANCE DOOR (L.M.I.)
ENVRALUM INDUSTRIES INC.
5110 N.W. 72 AVENUE BLDG. C
MIAMI, FL. 33166
TEL. (786) 251-0204 FAX. (305) 385-7749

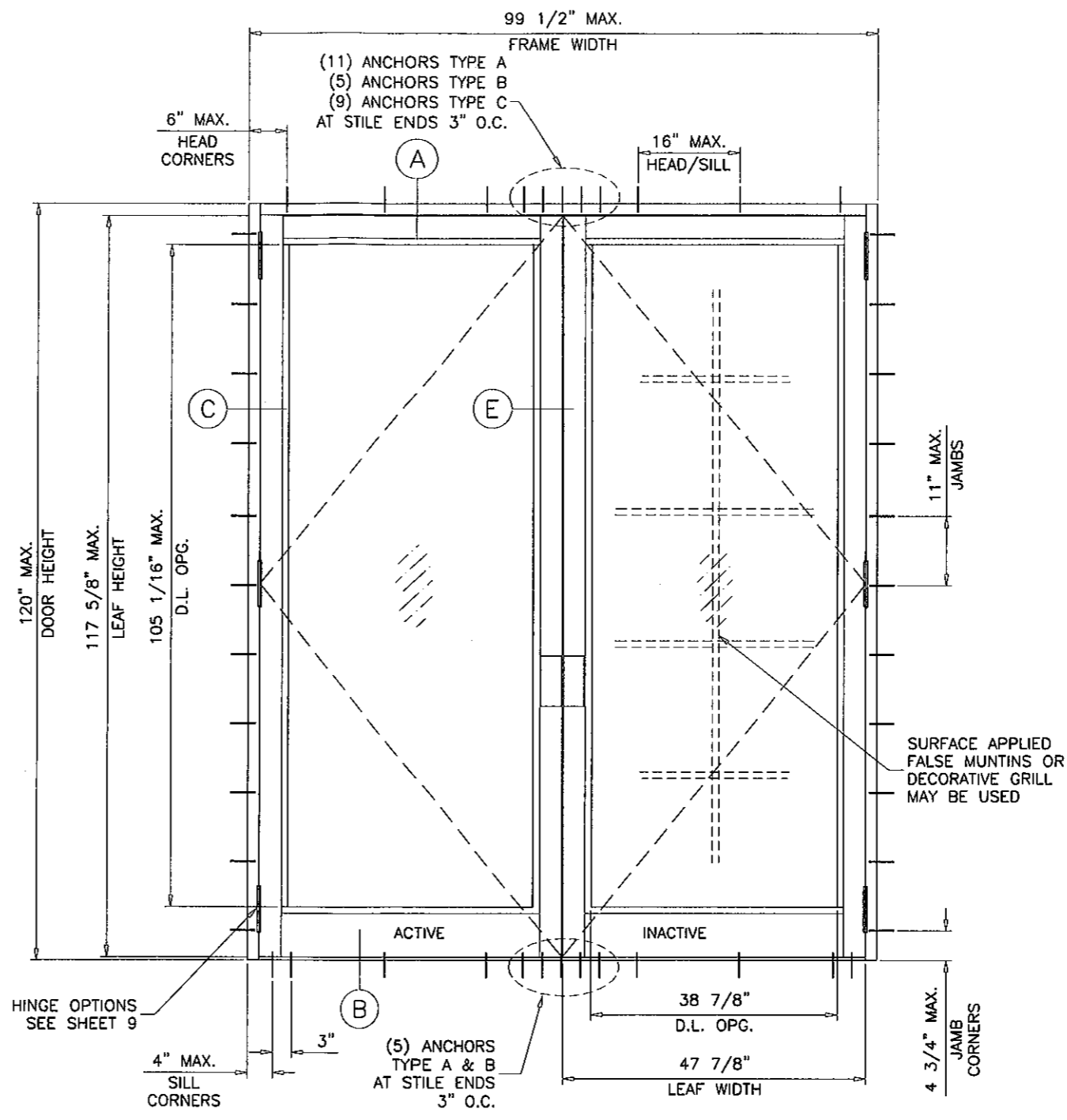
no	date	revisions:	description

date: 07-10-12
scale: 3/8" = 1"
dr. by: HAMID
chk. by:

drawing no.
W12-38
sheet 1 of 10



(X)



(XX)

MAXIMUM DESIGN LOAD RATING = + 100.0 PSF
 (FOR SIZES SHOWN ABOVE OR SMALLER) - 100.0 PSF
 SEE SHEET 4 FOR LOCK OPTIONS AND LIMITATIONS.

GLASS D.L.O. DIMS.
 D.L.O. HEIGHT = DOOR FRAME HEIGHT - 14.9375"
 D.L.O. WIDTH (X DOORS) = FRAME WIDTH - 12.8125"
 D.L.O. WIDTH (XX DOORS) = (FRAME WIDTH - 21.875")/2

NOTE:
 GLASS CAPACITIES ON THIS SHEET ARE
 BASED ON ASTM E1300-04 (3 SEC. GUSTS)
 AND FLORIDA BUILDING COMMISSION
 DECLARATORY STATEMENT DCA05-DEC-219

Engr: JAVAD AHMAD
 CIVIL
 FLA. PE # 70592
 C.A.N. 3538

SEP 20 2012

Approved as complying with the
 Florida Building Code
 Date Sept. 20, 2012
 NOA# 121 0713 10
 Miami Dade Product Control
 By Mameel Piroz

af c
AL-FAROOQ CORPORATION
 ENGINEERS & PRODUCT DEVELOPMENT
 1235 S.W. 87 AVE
 MIAMI, FLORIDA 33174
 TEL. (305) 264-8100 FAX. (305) 262-6978
 COMP-ANL\W12-38ENV

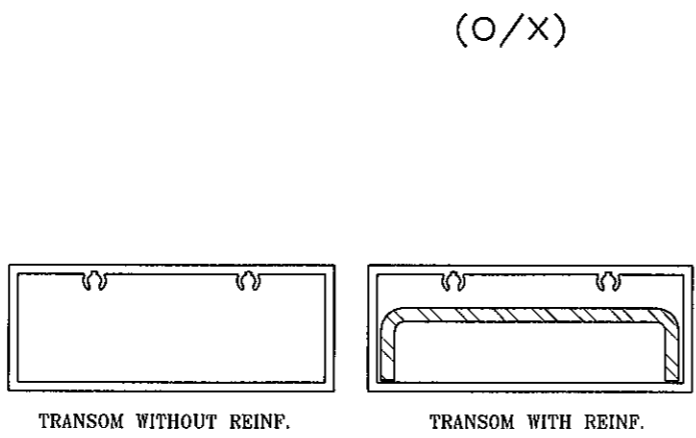
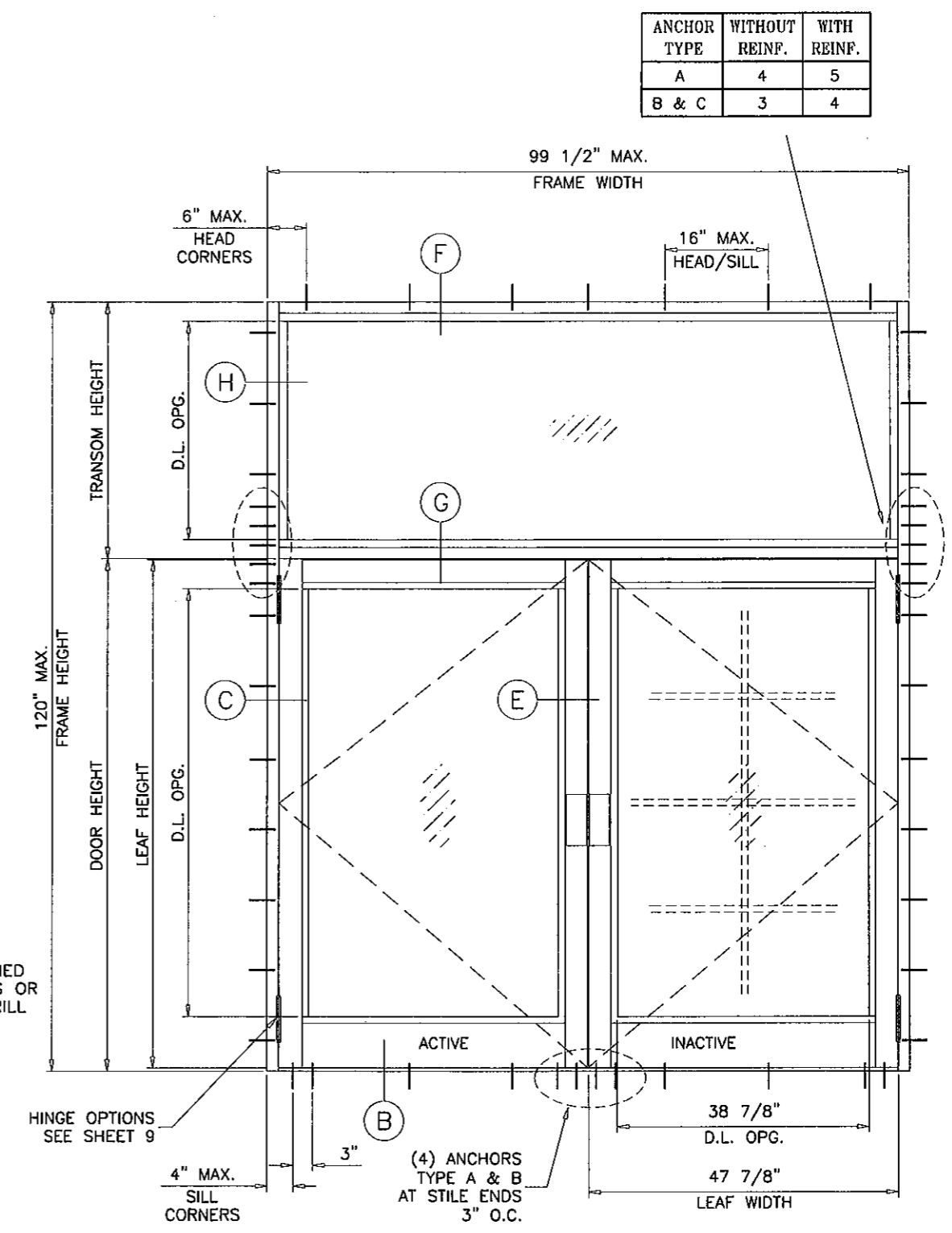
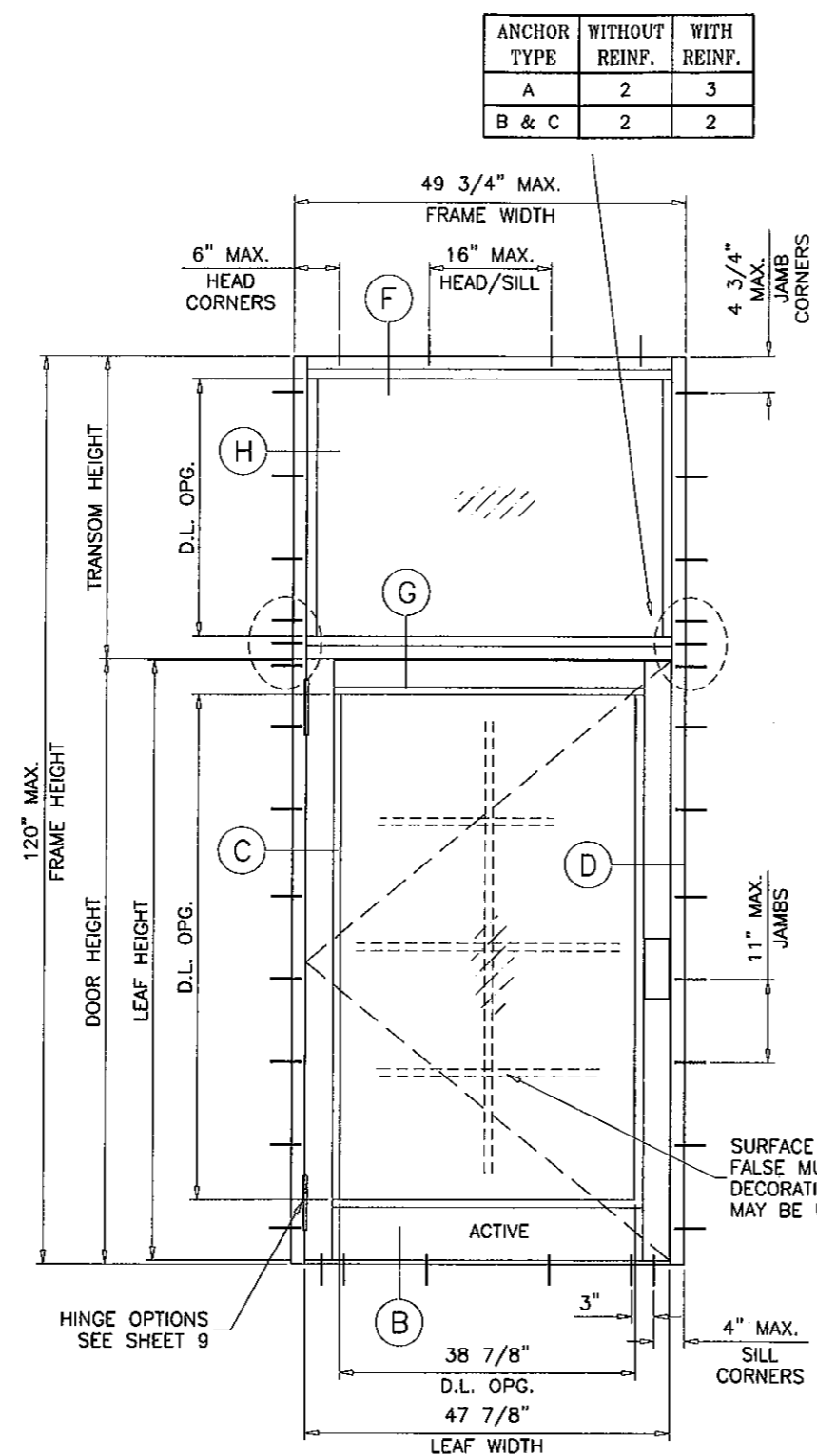
SERIES ENV-350 INSWING ENTRANCE DOOR (L.M.I.)
ENVIRALUM INDUSTRIES INC.
 5110 N.W. 72 AVENUE BLDG. C
 MIAMI, FL. 33166
 TEL. (786) 251-0204 FAX. (305) 385-7749

no	date	by	description

date: 07-10-12
 scale: 1/2"=1'-0"
 dr. by: HAMID
 chk. by:

drawing no.
W12-38
 sheet 2 of 10

SINGLE OR DOUBLE DOORS WITH TRANSOM CAPACITY - PSF				
FRAME/TRANSOM WIDTH	DOOR HEIGHT	TRANSOM HEIGHT	WITHOUT REINF.	WITH REINF.
			EXT.(+) INT.(-)	EXT.(+) INT.(-)
37-3/4" (X)	75-1/2" (XX)	24"	75.0	75.0
		30"	75.0	75.0
		36"	75.0	75.0
		40"	75.0	75.0
40-3/4" (X)	81-1/2" (XX)	24"	75.0	75.0
		30"	75.0	75.0
		36"	71.8	75.0
		40"	69.0	75.0
43-3/4" (X)	87-1/2" (XX)	24"	75.0	75.0
		30"	65.4	75.0
		36"	61.4	75.0
		40"	58.9	75.0
46-3/4" (X)	93-1/2" (XX)	24"	60.6	75.0
		30"	56.5	75.0
		36"	52.9	75.0
		40"	50.7	75.0
49-3/4" (X)	99-1/2" (XX)	24"	52.9	75.0
		30"	49.3	75.0
		36"	46.0	75.0
		40"	44.5	73.8
37-3/4" (X)	75-1/2" (XX)	24"	75.0	75.0
		30"	75.0	75.0
		36"	75.0	75.0
		40"	75.0	75.0
40-3/4" (X)	81-1/2" (XX)	24"	75.0	75.0
		30"	73.8	75.0
		36"	69.4	75.0
		40"	67.4	75.0
43-3/4" (X)	87-1/2" (XX)	24"	67.4	75.0
		30"	63.2	75.0
		36"	59.3	75.0
		40"	58.3	75.0
46-3/4" (X)	93-1/2" (XX)	24"	58.3	75.0
		30"	54.6	75.0
		36"	51.2	75.0
		40"	50.9	75.0
49-3/4" (X)	99-1/2" (XX)	24"	50.9	75.0
		30"	47.5	75.0
		36"	44.5	73.8
		40"	44.5	73.8
37-3/4" (X)	75-1/2" (XX)	24"	75.0	75.0
		30"	75.0	75.0
		36"	75.0	75.0
		40"	75.0	75.0
40-3/4" (X)	81-1/2" (XX)	24"	74.5	75.0
		30"	70.1	75.0
		36"	66.0	75.0
		40"	63.9	75.0
43-3/4" (X)	87-1/2" (XX)	24"	63.9	75.0
		30"	60.0	75.0
		36"	56.0	75.0
		40"	55.3	75.0
46-3/4" (X)	93-1/2" (XX)	24"	55.3	75.0
		30"	51.8	75.0
		36"	48.2	75.0
		40"	45.2	73.8
49-3/4" (X)	99-1/2" (XX)	24"	48.2	75.0
		30"	45.2	73.8
		36"	42.0	73.8
		40"	41.5	73.8
37-3/4" (X)	75-1/2" (XX)	24"	75.0	75.0
		30"	75.0	75.0
		36"	75.0	75.0
		40"	75.0	75.0
40-3/4" (X)	81-1/2" (XX)	24"	70.8	75.0
		30"	67.0	75.0
		36"	63.0	75.0
		40"	60.7	75.0
43-3/4" (X)	87-1/2" (XX)	24"	60.7	75.0
		30"	57.0	75.0
		36"	53.0	75.0
		40"	52.5	75.0
46-3/4" (X)	93-1/2" (XX)	24"	52.5	75.0
		30"	49.0	75.0
		36"	45.0	75.0
		40"	45.8	73.8



NOTE:
GLASS CAPACITIES ON THIS SHEET ARE
BASED ON ASTM E1300-04 (3 SEC. GUSTS)
AND FLORIDA BUILDING COMMISSION
DECLARATORY STATEMENT DCA05-DEC-219

Engr: JAVAD AHMAD
CIVIL
FLA. PE # 70592
C.A.N. 3538

SEP 14 2012

Approved as complying with the
Florida Building Code
Date: Sept. 20, 2012
NOA# 12-0713-10
Miami Dade Product Control

By: Mamuel Perez

af c
AL-FAROOQ CORPORATION
ENGINEERS & PRODUCT DEVELOPMENT
1235 S.W. 87 AVE
MIAMI, FLORIDA 33174
TEL. (305) 264-8100 FAX. (305) 262-6978
COMP-ANL \ W12-38ENV

SERIES ENV-350 INSWING ENTRANCE DOOR (L.M.I.)
ENVIRALUM INDUSTRIES INC.
5110 N.W. 72 AVENUE BLDG. C
MIAMI, FL. 33166
TEL. (786) 251-0204 FAX. (305) 385-7749

no	date	description

date: 07-10-12
scale: 1/2"=1'-0"
dr. by: HAMID
chk. by:

drawing no.
W12-38

sheet 3 of 10

LOCK OPTIONS:

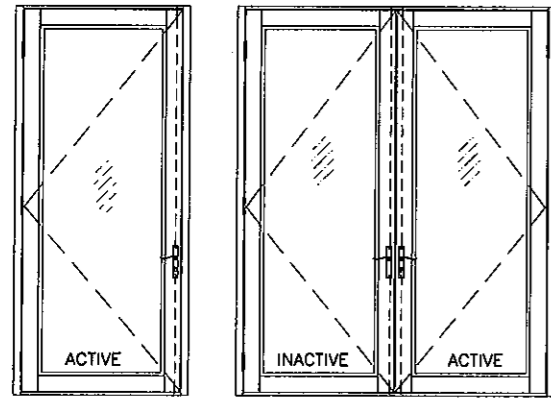
STD. 3 POINT LOCK
 MAX. FRAME HEIGHT = 120 IN.
 MAX. LEAF WIDTH = 48 IN.
 MAX. DESIGN LOAD = 100 PSF

ACTIVE LEAF:

3 POINT LOCK SYSTEM BY 'INTERLOCK' AT 39" FROM BOTTOM
 HANDLE ACTIVATES DEAD BOLT AND SHOOT BOLTS ENGAGING AT HEAD AND SILL
 KEY OPERATED ON EXTERIOR AND THUMB TURN ON INTERIOR
 FASTENED TO ACTIVE LEAF LOCK STILE WITH
 (2) #8-32 X 2" OH MS

INACTIVE LEAF:

2 POINT LOCK SYSTEM BY 'INTERLOCK' AT 39" FROM BOTTOM
 HANDLE ACTIVATES SHOOT BOLTS ENGAGING AT HEAD AND SILL
 FASTENED TO INACTIVE LEAF LOCK STILE WITH
 (2) #8-32 X 2" OH MS



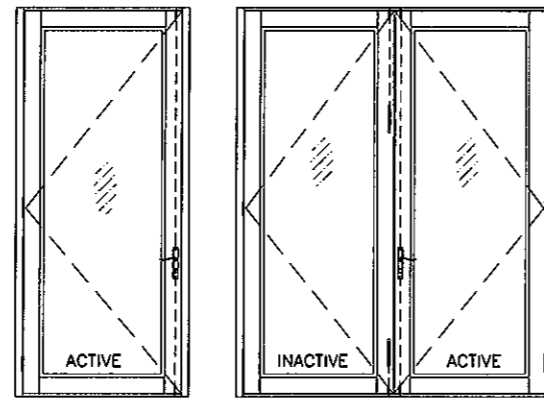
STD. 3 POINT LOCK
 MAX. FRAME HEIGHT = 120 IN.
 MAX. LEAF WIDTH = 48 IN.
 MAX. DESIGN LOAD = 100 PSF

ACTIVE LEAF:

THREE POINT LOCK SYSTEM SERIES 2222 BY 'REGENT HARDWARE'
 KEY OPERATED FROM EXTERIOR AND THUMB TURN ON INTERIOR WITH CONCEALED FLUSH BOLTS AT TOP & BOTTOM OF LOCK STILE
 LOCATED AT 34" FROM BOTTOM OF LEAF

INACTIVE LEAF:

MANUALLY OPERATED TWO POINT LOCK SYSTEM BY 'REGENT HARDWARE' WITH CONCEALED FLUSH BOLTS AT TOP & BOTTOM OF LOCK STILE
 FASTENED WITH
 (2) #8-32 X 1/4" PH MACHINE SCREWS



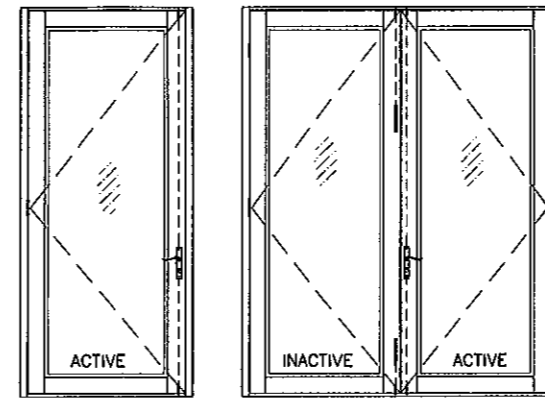
STD. 3 POINT LOCK
 MAX. FRAME HEIGHT = 120 IN.
 MAX. LEAF WIDTH = 48 IN.
 MAX. DESIGN LOAD = 100 PSF

ACTIVE LEAF:

KEY OPERATED THREE POINT LOCK SYSTEM BY 'ADAMS RITE' WITH CONCEALED FLUSH BOLTS AT TOP & BOTTOM OF LOCK STILE AND A THUMB TURN ON THE INTERIOR, LOCATED AT 40" FROM BOTTOM OF PANEL
 FASTENED WITH
 (2) #12-24 X 1/2" FH MACHINE SCREWS

INACTIVE LEAF:

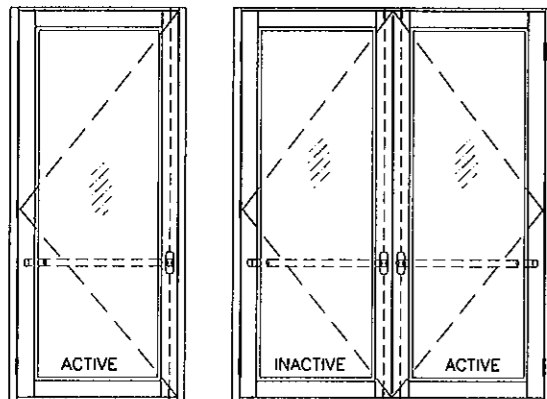
MANUALLY OPERATED TWO POINT LOCK SYSTEM BY 'ADAMS RITE' WITH CONCEALED FLUSH BOLTS AT TOP & BOTTOM OF LOCK STILE
 FASTENED WITH
 (2) #8-32 X 1/4" PH MACHINE SCREWS



PANIC EXIT DEVICE
 MAX. FRAME HEIGHT = 98 IN.
 MAX. LEAF WIDTH = 48 IN.
 MAX. DESIGN LOAD = 75 PSF

ACTIVE & INACTIVE LEAF:

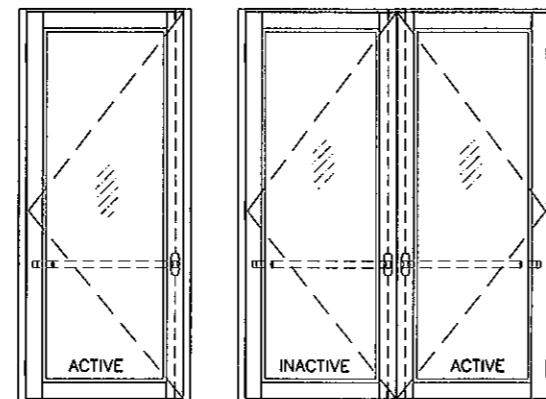
CONCEALED VERTICAL ROD PANIC EXIT DEVICE # 5770 BY 'REGENT HARDWARE' LOCATED AT 40" FROM SILL AT EACH LEAF.
 FASTENED WITH
 (1) #10 X 3/8" FH SELF DRILLING SCREW AT ONE END AND
 (2) #10 X 1/2" FH SELF DRILLING SCREWS AT OTHER END



PANIC EXIT DEVICE
 MAX. FRAME HEIGHT = 120 IN.
 MAX. LEAF WIDTH = 48 IN.
 MAX. DESIGN LOAD = 100 PSF

ACTIVE & INACTIVE LEAF:

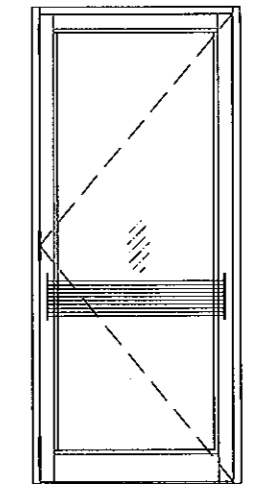
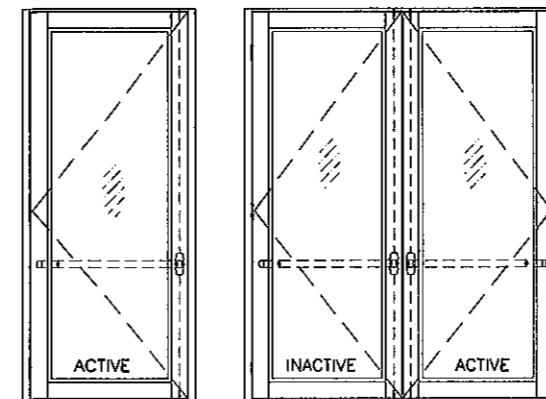
CONCEALED VERTICAL ROD PANIC EXIT DEVICE # G86 BY 'ADAMS RITE' LOCATED AT 40" FROM SILL AT EACH LEAF.
 FASTENED WITH
 (2) #10-32 X 3/4" FH MACHINE SCREWS AT ONE END AND
 (2) #10-24 X 1/2" FH MACHINE SCREWS AT OTHER END



PANIC EXIT DEVICE
 MAX. FRAME HEIGHT = 120 IN.
 MAX. LEAF WIDTH = 48 IN.
 MAX. DESIGN LOAD = 100 PSF

ACTIVE & INACTIVE LEAF:

CONCEALED VERTICAL ROD PANIC EXIT DEVICE PRECISION 2800 BY 'STANLEY' LOCATED AT 40" FROM SILL AT EACH LEAF.
 FASTENED WITH
 (2) #10-32 X 3/4" FH MACHINE SCREWS AT ONE END AND
 (2) #10-24 X 1/2" FH MACHINE SCREWS AT OTHER END



PANIC DEVICE GUARD

(5) 1" DIA. ROUND ALUM BARS SPACED 1" APART
 SCREWED TO A 3/8" THICK FLAT BAR FASTENED TO DOOR LEAF WITH
 (4) 1/4-20 X 3/4" SMS

GUARD TO BE INSTALLED OVER PANIC DEVICE DURING PERIODS OF HURRICANE WARNING.

Engr: JAVAD AHMAD
 CIVIL
 FLA. PE # 70592
 C.A.N. 3538
 SEP 14 2012

Approved as complying with the Florida Building Code
 Date: Sept. 20, 2012
 NOA# 12-0713.10
 Miami Dade Product Control
 By: *Manuel Perez*

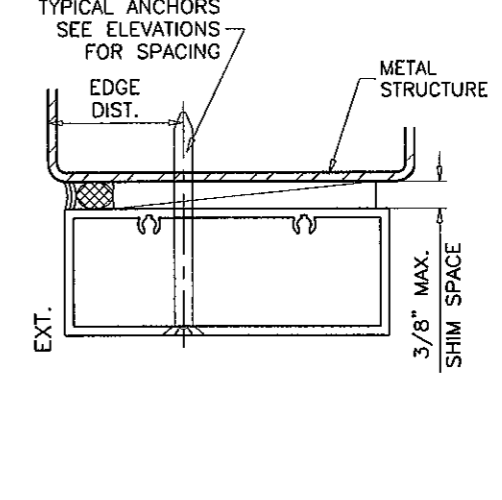
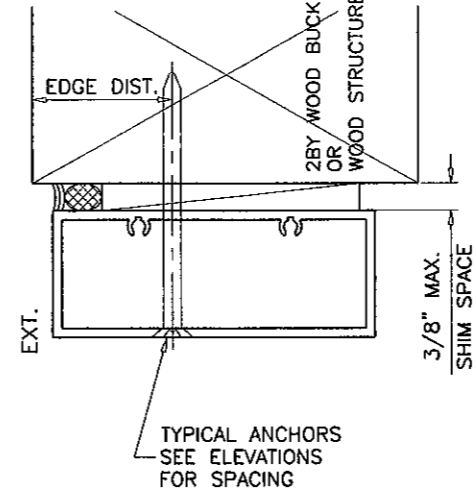
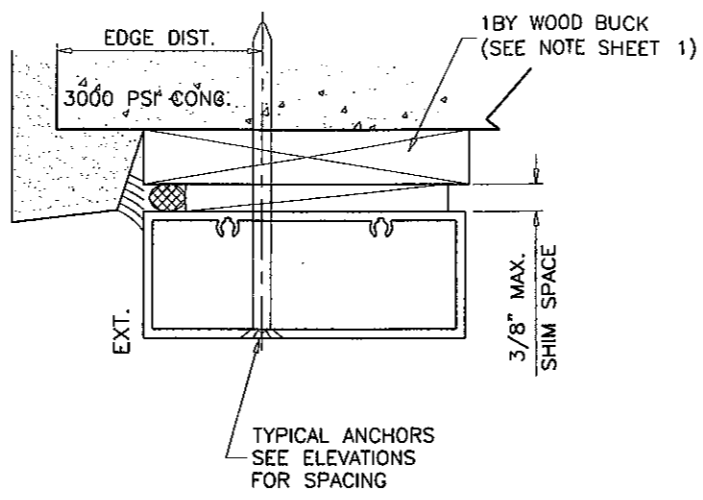
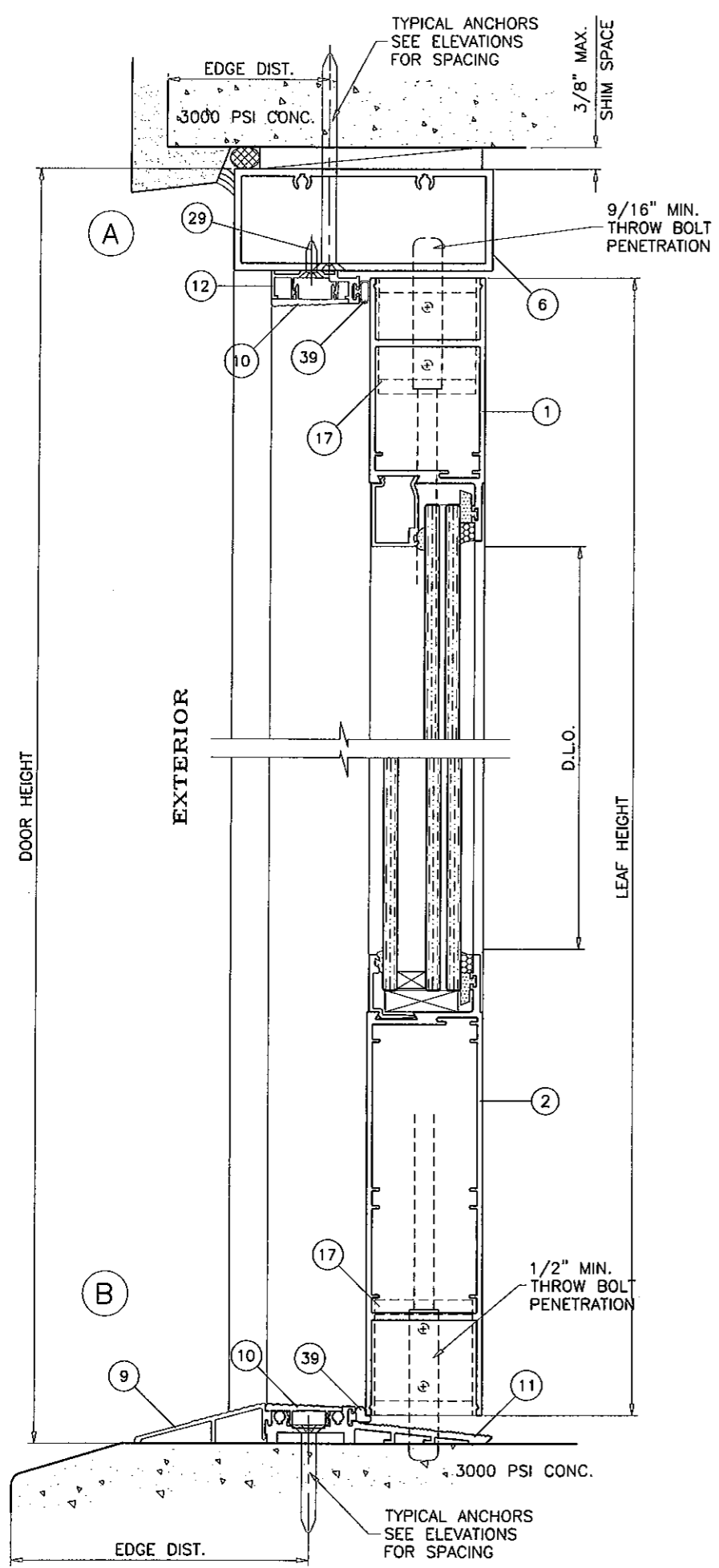
af c
AL-FAROOQ CORPORATION
 ENGINEERS & PRODUCT DEVELOPMENT
 1235 S.W. 87 AVE
 MIAMI, FLORIDA 33174
 TEL. (305) 264-8100 FAX. (305) 262-6978
 COMP-ANL\W12-38ENV

SERIES ENV-350 INSWING ENTRANCE DOOR (L.M.I.)
ENVRALUM INDUSTRIES INC.
 5110 N.W. 72 AVENUE BLDG. C
 MIAMI, FL. 33166
 TEL. (786) 251-0204 FAX. (305) 385-7749

no	date	description

revisions:

date: 07-10-12
 scale: 3/8" = 1"
 dr. by: HAMID
 chk. by:
 drawing no. **W12-38**
 sheet 4 of 10



WOOD BUCKS AND METAL STRUCTURE NOT BY ENVIRALUM MUST SUSTAIN LOADS IMPOSED BY GLAZING SYSTEM AND TRANSFER THEM TO THE BUILDING STRUCTURE.

TYPICAL ANCHORS: SEE ELEV. FOR SPACING

TYPE 'A'
1/4" DIA ULTRACON BY 'ELCO' (Fu=177 KSI, Fy=155 KSI)
 INTO 2BY WOOD BUCKS OR WOOD STRUCTURES WITH 1-1/2" MIN. PENETRATION INTO WOOD THRU 1BY WOOD BUCKS INTO CONCRETE WITH 1-1/4" MIN. EMBED INTO CONCRETE
 DIRECTLY INTO CONCRETE OR MASONRY WITH 1-1/4" MIN. EMBED INTO CONC. OR MASONRY
ANCHOR EDGE DISTANCES
 INTO CONCRETE AND MASONRY = 2-1/2" MIN.
 INTO WOOD STRUCTURE = 1" MIN.

TYPE 'B'
5/16" DIA ULTRACON BY 'ELCO' (Fu=177 KSI, Fy=155 KSI)
 INTO WOOD STRUCTURES WITH 1-7/8" MIN. PENETRATION INTO WOOD THRU 1BY OR 2BY WOOD BUCKS INTO CONCRETE WITH 1-1/4" MIN. EMBED INTO CONCRETE
 DIRECTLY INTO CONCRETE OR MASONRY WITH 1-1/4" MIN. EMBED INTO CONC. OR MASONRY
ANCHOR EDGE DISTANCES
 INTO CONCRETE AND MASONRY = 3" MIN.
 INTO WOOD STRUCTURE = 1-1/4" MIN.

TYPE 'C'
1/4" DIA. SELF DRILLING SCREWS ST/ST (GRADE 5 CRS)
 INTO METAL STRUCTURES
 STEEL : 12 GA. MIN. (Fy = 36 KSI MIN.)
 ALUMINUM : 1/8" THK. MIN. (6063-T5 MIN.)
 (STEEL IN CONTACT WITH ALUMINUM TO BE PLATED OR PAINTED)
ANCHOR EDGE DISTANCES
 INTO METAL STRUCTURE = 1/2" MIN.

CONCRETE AT HEAD, SILL OR JAMBS f'c = 3000 PSI MIN.
 C-90 HOLLOW/FILLED BLOCK AT JAMBS f'm = 2000 PSI MIN.

Engr: JAVAD AHMAD
 CIVIL
 FLA. PE # 70592
 C.A.N. 3538
 SEP 17 2012

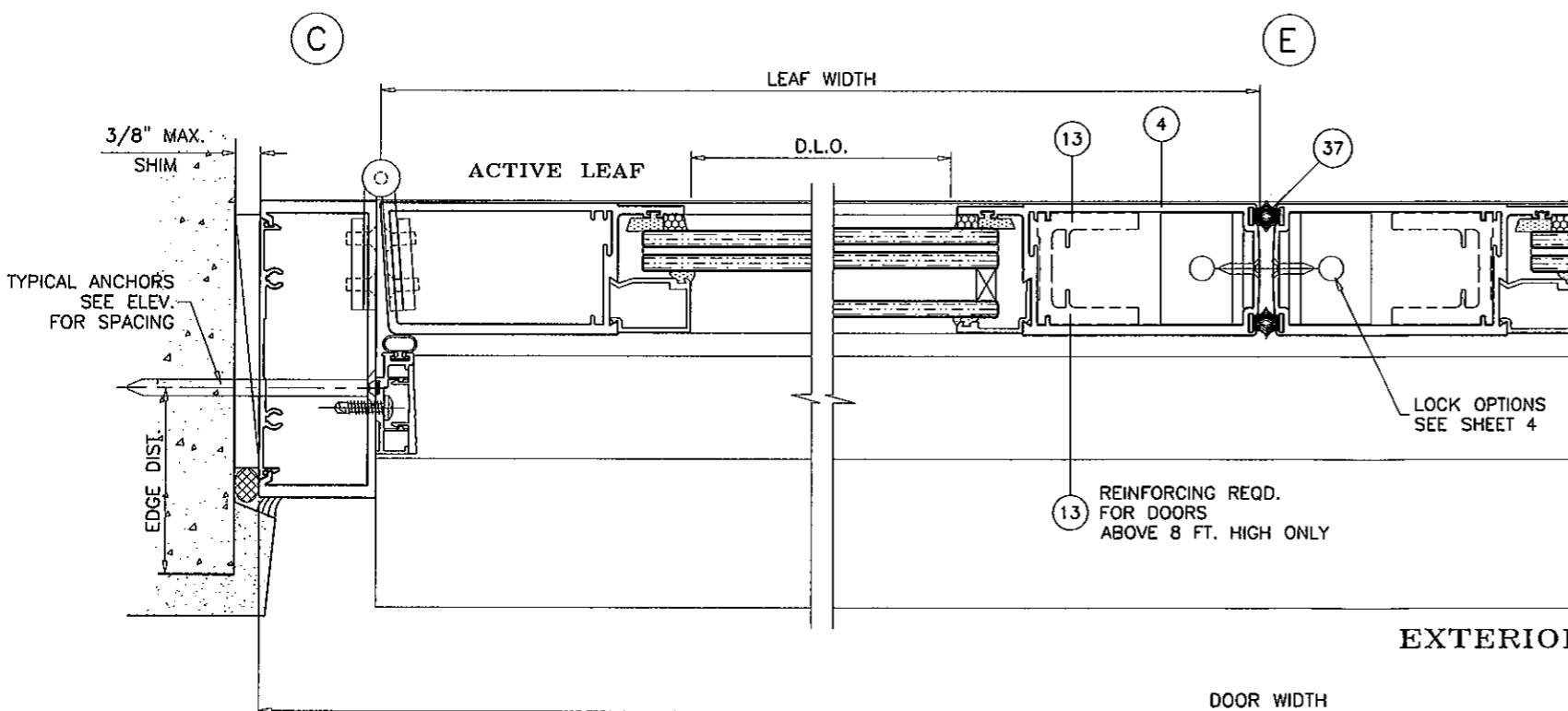
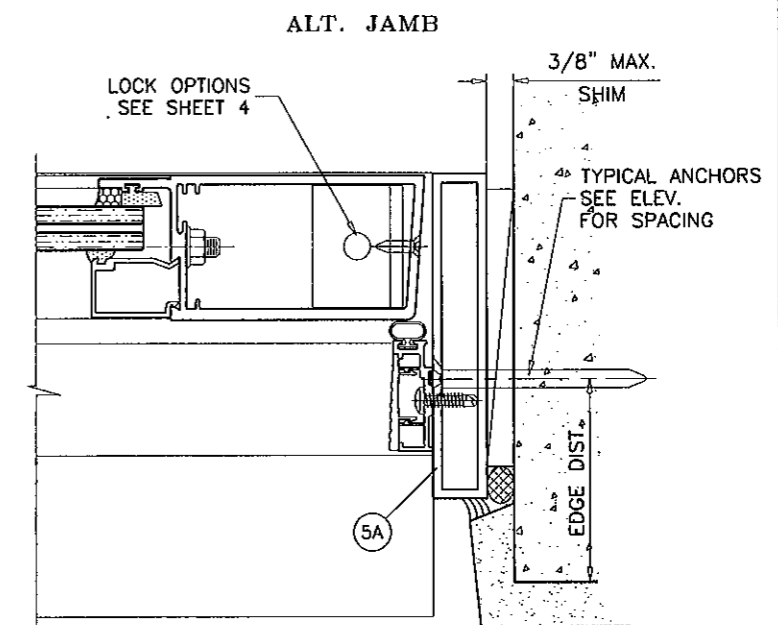
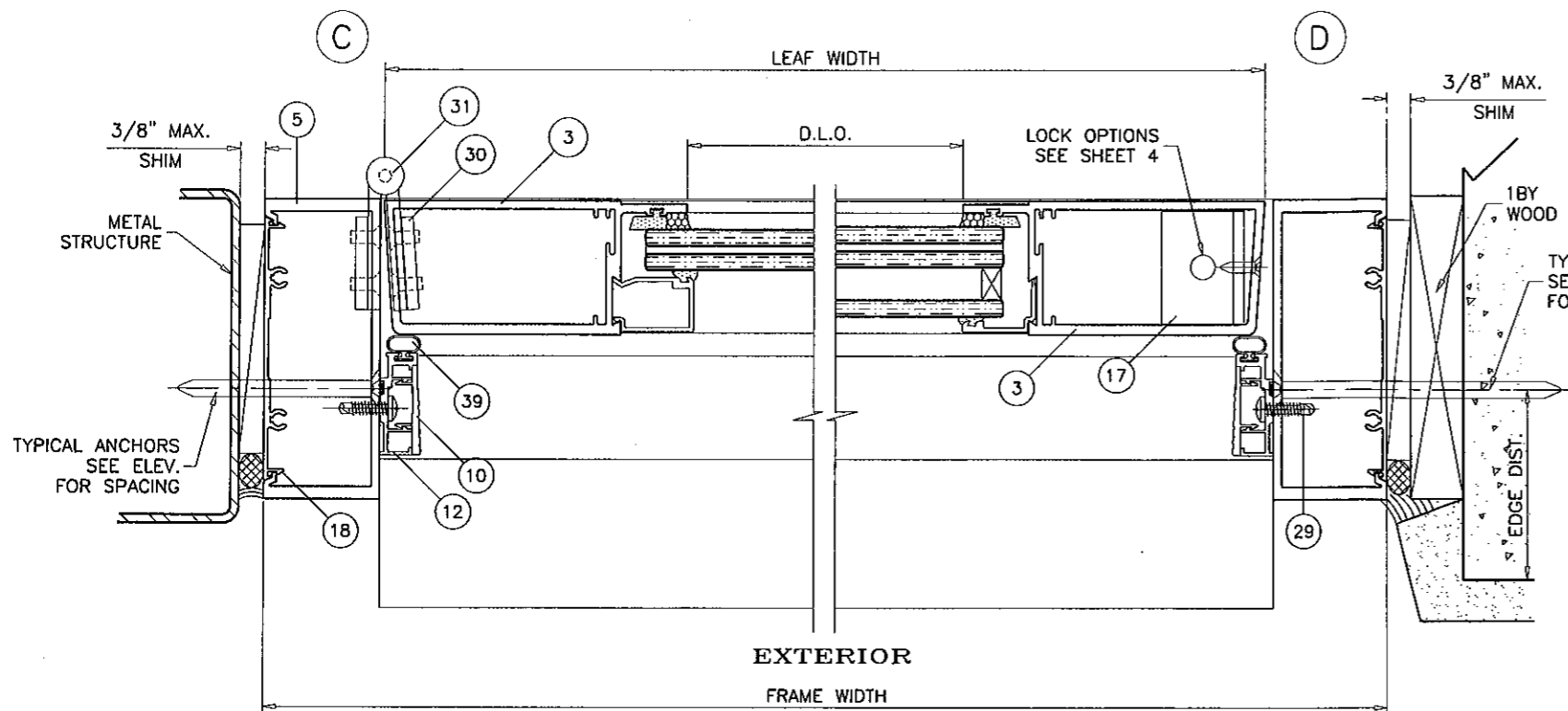
Approved as complying with the Florida Building Code
 Date Sept 20, 2012
 NOAH 12-0713-10
 Miami Dade Product Control
 By Manuel Perez

af c
AL-FAROOQ CORPORATION
 ENGINEERS & PRODUCT DEVELOPMENT
 1235 S.W. 87 AVE
 MIAMI, FLORIDA 33174
 TEL. (305) 264-8100 FAX. (305) 262-6978
 COMP-ANL\W12-38ENV

SERIES ENV-350 INSWING ENTRANCE DOOR (L.M.I.)
ENVIRALUM INDUSTRIES INC.
 5110 N.W. 72 AVENUE BLDG. C
 MIAMI, FL. 33166
 TEL. (786) 251-0204 FAX. (305) 385-7749

no	date	description

date: 07-10-12
 scale: 3/8" = 1"
 dr. by: HAMID
 chk. by:
 drawing no. **W12-38**
 sheet 5 of 10



DOOR DETAILS

Engr: JAVAD AHMAD
 CIVIL
 FLA. PE # 70592
 C.A.N. 3538
 SEP 20 2012

Approved as complying with the
 Florida Building Code
 Date: Sept. 20, 2012
 NOA: 12-0713.10
 Miami Dade Product Control
 By: *Marcus Perez*

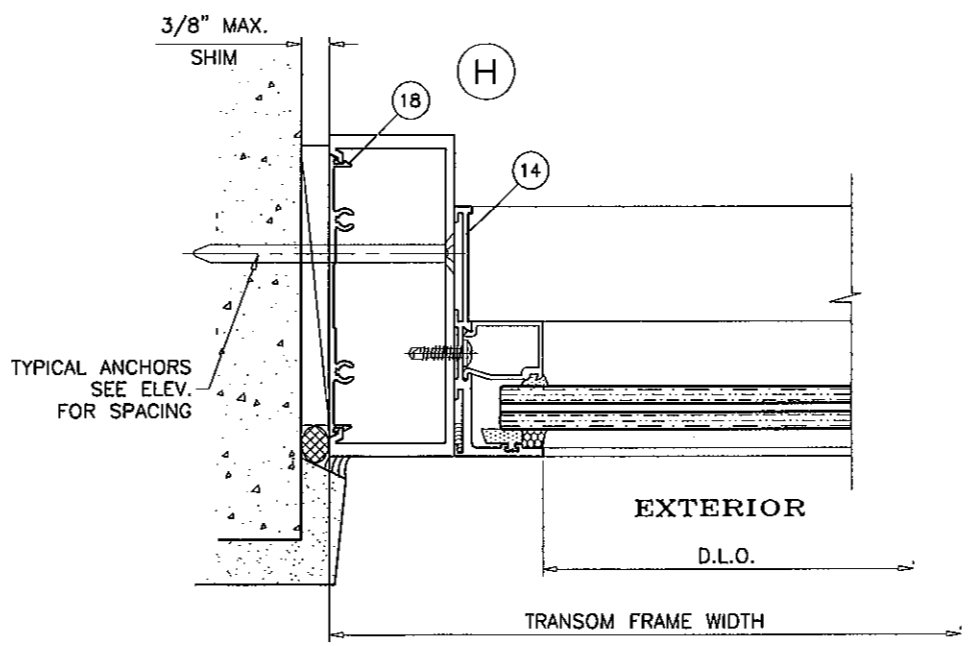
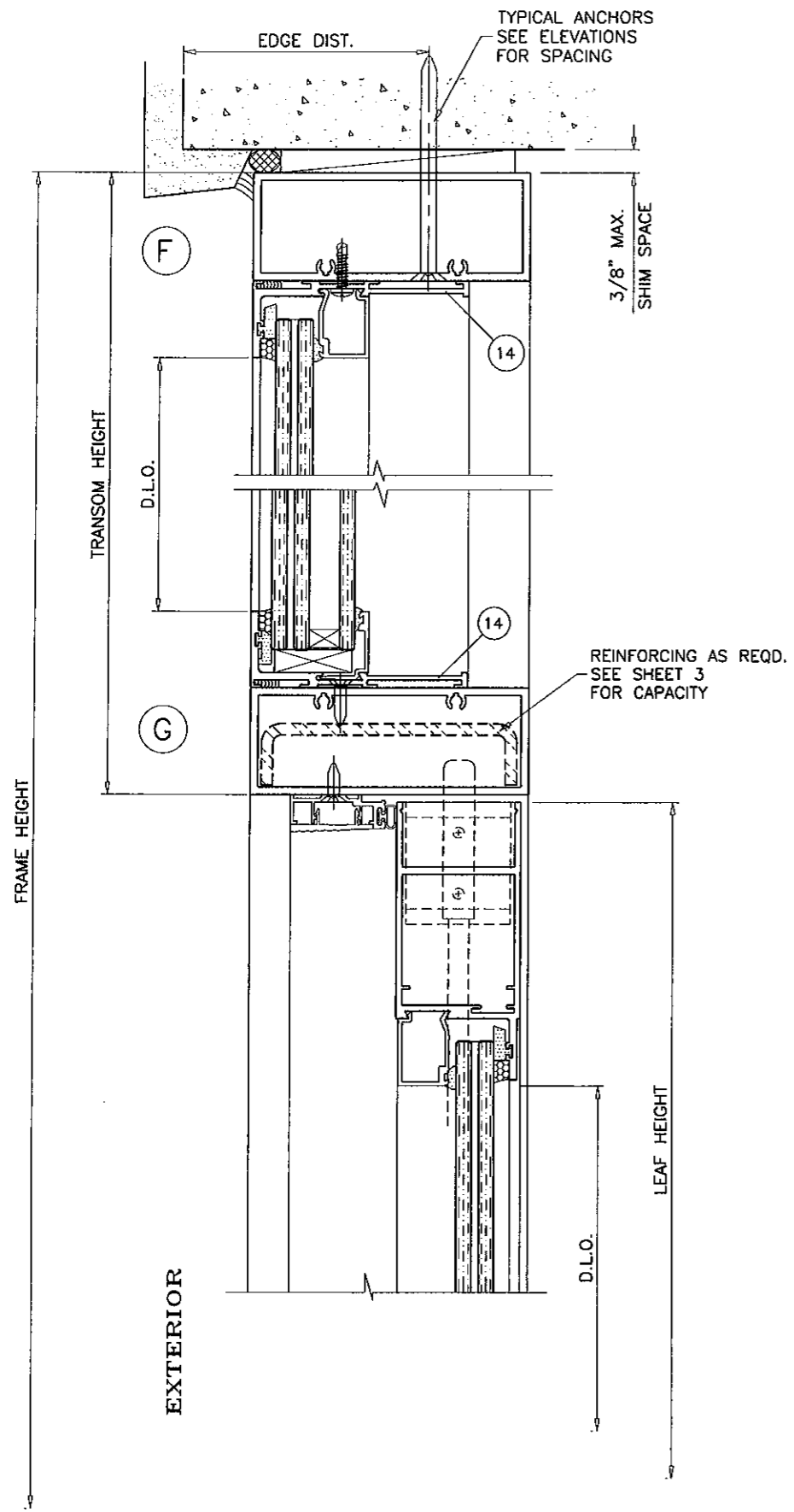
af c
AL-FAROOQ CORPORATION
 ENGINEERS & PRODUCT DEVELOPMENT
 1235 S.W. 87 AVE
 MIAMI, FLORIDA 33174
 TEL. (305) 264-8400 FAX. (305) 262-6978
 COMP-ANL\W12-38ENV

SERIES ENV-350 INSWING ENTRANCE DOOR (L.M.I.)
ENVALUM INDUSTRIES INC.
 5110 N.W. 72 AVENUE BLDG. C
 MIAMI, FL. 33166
 TEL. (786) 251-0204 FAX. (305) 385-7749

no	date	description

date: 07-10-12
 scale: 3/8" = 1"
 dr. by: HAMID
 chk. by:

drawing no.
W12-38
 sheet 6 of 10



TRANSOM DETAILS

Engr: JAVAD AHMAD
 CIVIL
 FLA. PE # 70592
 C.A.N. 3538

SEP 11 2012

Approved as complying with the
 Florida Building Code
 Date Sept. 10, 2012
 NOAH 12-0713.10
 Miami Dade Product Control

By Manuel Prez

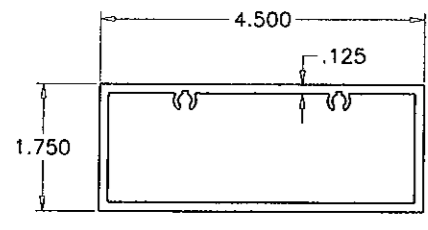
afc
AL-FAROOQ CORPORATION
 ENGINEERS & PRODUCT DEVELOPMENT
 1235 S.W. 87 AVE
 MIAMI, FLORIDA 33174
 TEL. (305) 264-8100 FAX. (305) 262-6978
 COMP-ANL\W12-38ENV

SERIES ENV-350 INSWING ENTRANCE DOOR (L.M.I.)
ENVIRALUM INDUSTRIES INC.
 5110 N.W. 72 AVENUE BLDG. C
 MIAMI, FL. 33166
 TEL. (786) 251-0204 FAX. (305) 385-7749

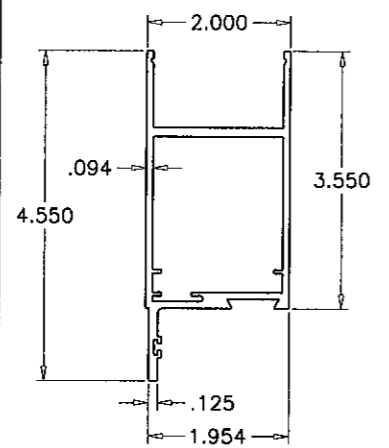
no	date	description

date: 07-10-12
 scale: 3/8" = 1"
 dr. by: HAMID
 chk. by:

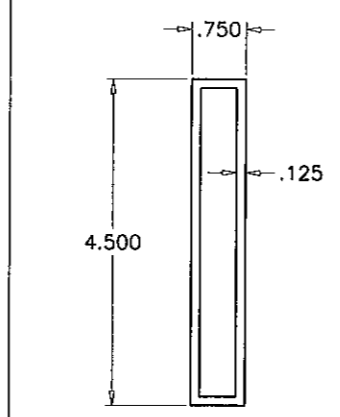
drawing no.
W12-38
 sheet 7 of 10



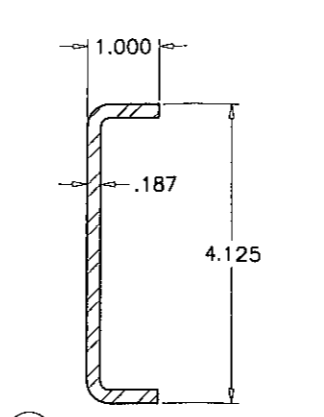
6 FRAME HEAD



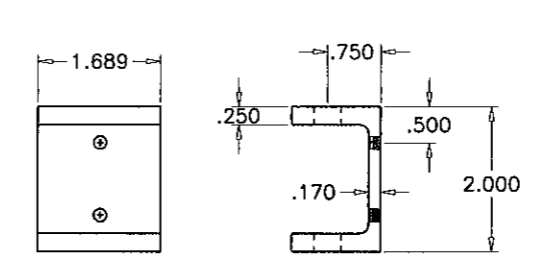
1 TOP RAIL



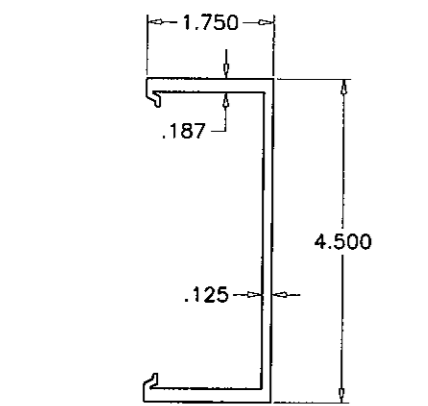
5A ALT. FRAME JAMB



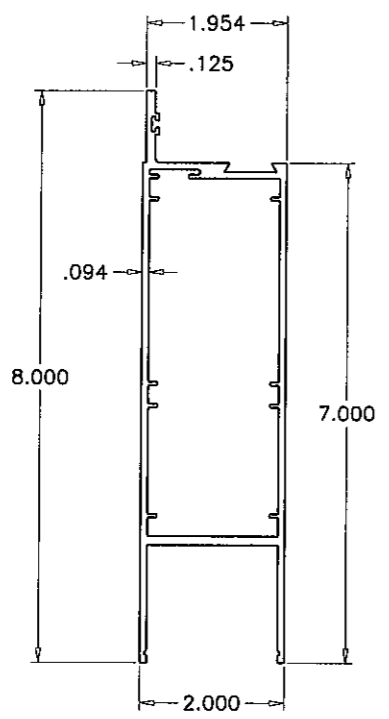
15 STEEL CHANNEL REINF.



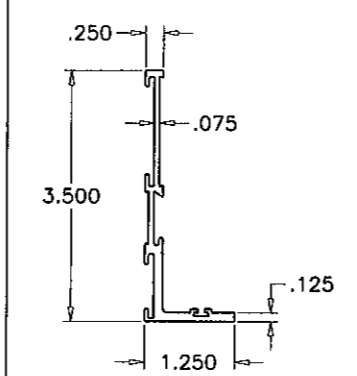
17 GUIDE CHANNEL FOR TOP & BOTTOM PIN



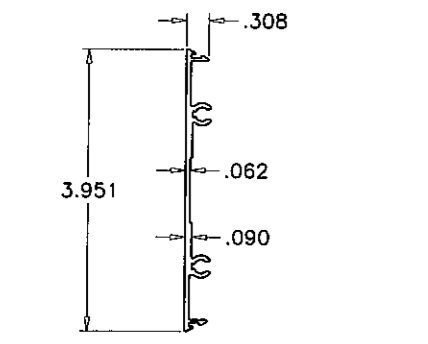
5 FRAME JAMB



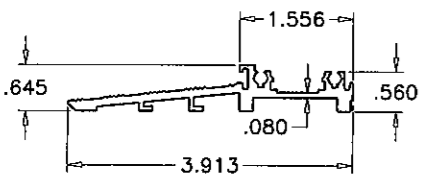
2 BOTTOM RAIL



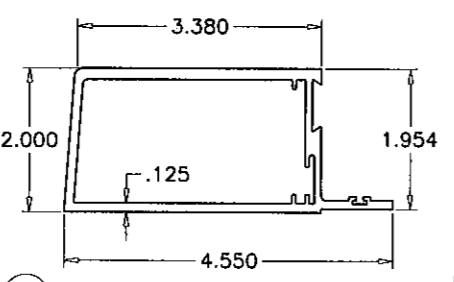
14 TRANSOM SASH



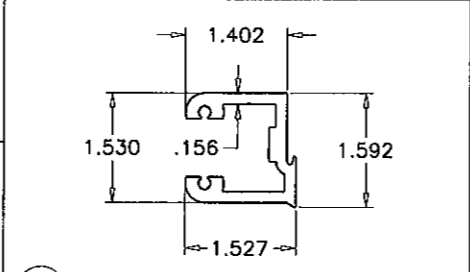
16 FLAT FILLER



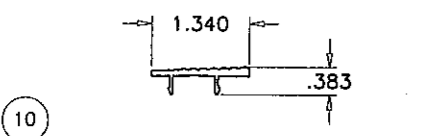
11 THRESHOLD



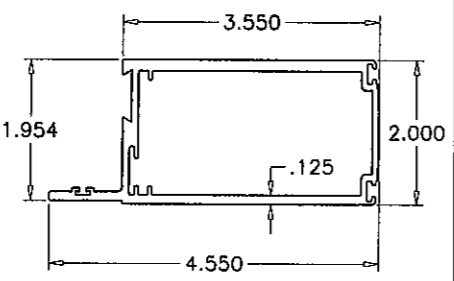
3 HINGE STILE



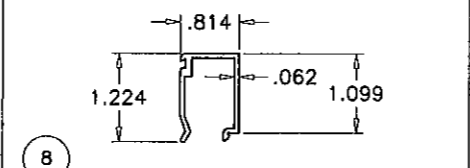
16 SHEAR BLOCK



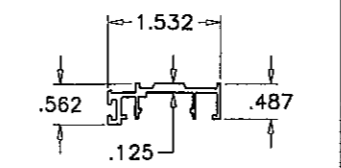
10 THRESHOLD/DOOR STOP COVER



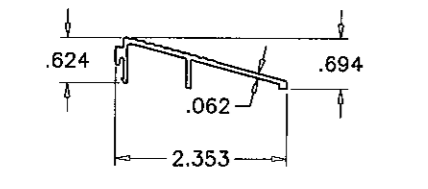
4 LOCK STILE



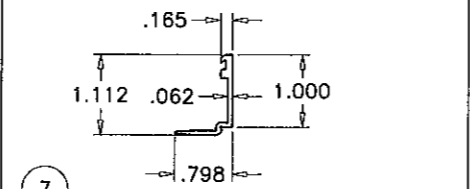
8 GLASS STOP (LAM. GLASS)



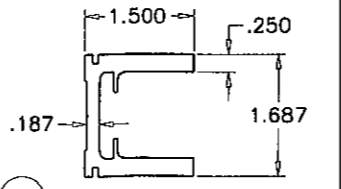
12 DOOR STOP



9 ADA THRESHOLD RAMP



7 GLASS STOP (INSUL. LAM. GLASS)



13 STILE REINFORCEMENT

af c
AL-FAROOQ CORPORATION
 ENGINEERS & PRODUCT DEVELOPMENT
 1235 S.W. 87 AVE
 MIAMI, FLORIDA 33174
 TEL. (305) 264-8100 FAX. (305) 262-6978
 COMP-ANL \ W12-38ENV

SERIES ENV-350 INSWING ENTRANCE DOOR (L.M.I.)
ENVRALUM INDUSTRIES INC.
 5110 N.W. 72 AVENUE BLDG. C
 MIAMI, FL. 33166
 TEL. (786) 251-0204 FAX. (305) 385-7749

no	date	description

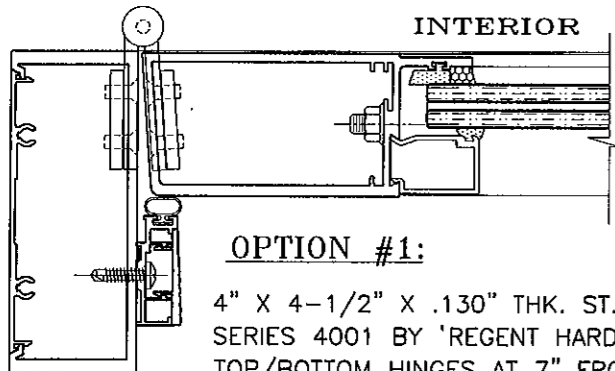
date: 07-10-12
 scale: 3/8" = 1"
 dr. by: HAMID
 chk. by:

drawing no.
W12-38
 sheet 8 of 10

Engr: JAVAD AHMAD
 CIVIL
 FLA. PE # 70592
 C.A.N. 3538
 SEP 13 2012

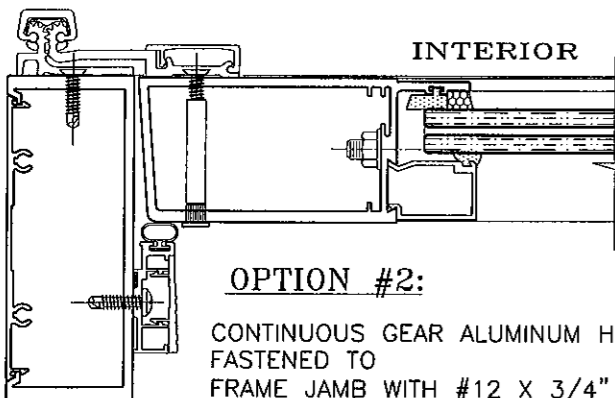
Approved as complying with the
 Florida Building Code
 Date Sept 20, 2012
 NOA# 12-0713-10
 Miami Dade Product Control
 By Manuel Perez

HINGES:



OPTION #1:

4" X 4-1/2" X .130" THK. ST. STEEL KNUCKLE HINGE SERIES 4001 BY 'REGENT HARDWARE' 3 PER LEAF TOP/BOTTOM HINGES AT 7" FROM EACH END CENTER HINGE AT MIDSPAN FASTENED TO FRAME JAMB WITH (4) 12-24 X 1/2" FH MS DOOR STILE WITH (4) 12-24 X 1/2" FH MS



OPTION #2:

CONTINUOUS GEAR ALUMINUM HINGE PEMKO-FS & SELECT SL-21 FASTENED TO FRAME JAMB WITH #12 X 3/4" FH SCREWS AT 6" O.C. DOOR STILE WITH 1/4-20 X 1-1/4" FH MS WITH SEX BOLT AT 6" O.C.

ITEM NO.	PART NUMBER	QUANTITY	DESCRIPTION	MATERIAL	MANF./SUPPLIER/REMARKS
1	ENV-351	1/ LEAF	TOP RAIL	6063-T6	ENVIRALUM
2	ENV-352	1/ LEAF	BOTTOM RAIL	6063-T6	ENVIRALUM
3	ENV-353	1/ LEAF	HINGE STILE	6063-T6	ENVIRALUM
4	ENV-354	1/ LEAF	LOCK STILE	6063-T6	ENVIRALUM
5	ENV-355	2/ DOOR	FRAME JAMB	6063-T6	ENVIRALUM
5A	-	2/ DOOR	ALT. FRAME JAMB	6063-T6	ENVIRALUM
6	ENV-356	1/ DOOR	FRAME HEAD	6063-T6	ENVIRALUM
7	ENV-357	4/ LITE	GLASS STOP (INSULATED GLASS)	6063-T6	ENVIRALUM
8	ENV-358	4/ LITE	GLASS STOP (LAMINATED GLASS)	6063-T6	ENVIRALUM
9	ENV-359	AS REQD.	ADA THRESHOLD RAMP	6063-T6	ENVIRALUM
10	ENV-3510	AS REQD.	THRESHOLD/DOOR STOP COVER	6063-T6	ENVIRALUM
11	ENV-3511	1/ DOOR	THRESHOLD	6063-T6	ENVIRALUM
12	ENV-3512	3/ DOOR	DOOR STOP	6063-T6	ENVIRALUM
13	ENV-3513	AS REQD.	STILE REINFORCEMENT, REQD. FOR DOORS ABOVE 8 FT. HIGH	6063-T6	ENVIRALUM
14	ENV-3515	4/ TRANSOM	TRANSOM SASH	6063-T6	ENVIRALUM
15	ENV-ST2	AS REQD.	1" X 4-1/8" X 1" X 3/16" THK. CHANNEL	STEEL	ENVIRALUM
16	ENV-3516	1/ LEAF CORNER	SHEAR BLOCK	6063-T6	ENVIRALUM
17	ENV-GC01	2/ LEAF	GUIDE CHANNEL FOR TOP & BOTTOM PIN	6063-T6	ENVIRALUM
18	ENV-454	AS REQD.	FLAT SNAP, 3" LONG	6063-T6	ENVIRALUM
19	-	-	-	-	-
20	-	-	-	-	-
21	ENV-G04	AS REQD.	INTERIOR GASKET	EPDM	GLAZING RUBBER PRODUCTS
22	ENV-G06	AS REQD.	SPACER GASKET	EPDM	GLAZING RUBBER PRODUCTS
23	ENV-SB01	1/ QUARTER POINT	3/8" X 1/2" X 2" SETTING BLOCKS, DUROMETER 70±5	EPDM	GLAZING RUBBER PRODUCTS
24	ENV-SB02	1/ QUARTER POINT	3/8" X 1-1/4" X 2" SETTING BLOCKS, DUROMETER 70±5	EPDM	GLAZING RUBBER PRODUCTS
25	DOW 791	AS REQD.	GLAZING COMPOUND	SILICONE	DOW CORNING
26	GE SCS2000	AS REQD.	GLAZING COMPOUND	SILICONE	GE MOMENTIVE
27	#12 X 1-1/2	4/ CORNER	FRAME ASSEMBLY SCREWS	ST. STEEL	HWH SMS, AT 16" O.C.
28	#8 X 5/8"	AS REQD.	TRANSOM SASH SCREWS	ST. STEEL	AT 3" FROM ENDS & 12" O.C.
29	#8 X 5/8"	AS REQD.	DOOR STOP ASSEMBLY SCREWS, @ 3" FROM ENDS & 20" O.C.	ST. STEEL	HWH SMS
30	ENV-BP1	2/ HINGE	HINGE BACKING PLATE, 1-1/2" X 1/4" THK. X 8-3/8" LONG	ALUMINUM	-
31	4001	3/ LEAF	4-1/2" X 4" BUTT HINGES	ST. STEEL	REGENT HARDWARE
32	SL-21	1/ LEAF	CONT. GEAR HINGE	ALUMINUM	SELECT PRODUCTS LTD.
32A	PEMKO-FS	1/ LEAF	CONT. GEAR HINGE	ALUMINUM	PEMKO
33	1/4-20 X 1"	10/ LEAF	CORNER BLOCK ASSEMBLY	ST. STEEL	HEX HEAD BOLT W/ WASHER
34	ENV-G01	AS REQD.	FIXED INTERIOR GASKET	EPDM	GLAZING RUBBER PRODUCTS
35	-	-	-	-	-
36	-	-	-	-	-
37	ENV-WP1	AS REQD.	WOOL PILE W'STRIPPING	TRILOBAL YARN	ULTRAFAB
38	ENV-WP2	AS REQD.	WOOL PILE W'STRIPPING	TRILOBAL YARN	ULTRAFAB
39	ENV-BG1	AS REQD.	BULB W'STRIPPING, (.475 BULB W/ FLAP X .270 BK.)	EPDM	ULTRAFAB

SEALANTS:

ALL FRAME CORNERS, JOINTS, MULLION SEAMS AND PERIMETER OF GLAZING BEAD TO FRAME SEALED WITH SILICONE SEALANT.

Engr: JAVAD AHMAD
CIVIL
FLA. PE # 70592
C.A.N. 3538

SEP 14 2012

Approved as complying with the Florida Building Code
Date: Sept. 20, 2012
NOA# 12-0713.10
Miami Date Product Control
By: Manuel Perez

af c

AL-FAROOQ CORPORATION
ENGINEERS & PRODUCT DEVELOPMENT
1235 S.W. 87 AVE
MIAMI, FLORIDA 33174
TEL. (305) 264-8100 FAX. (305) 262-6978
COMP-ANI_W12-38ENV

SERIES ENV-350 INSWING ENTRANCE DOOR (L.M.I.)

ENVIRALUM INDUSTRIES INC.
5110 N.W. 72 AVENUE BLDG. C
MIAMI, FL. 33166
TEL. (786) 251-0204 FAX. (305) 385-7749

revisions:

no.	date	description

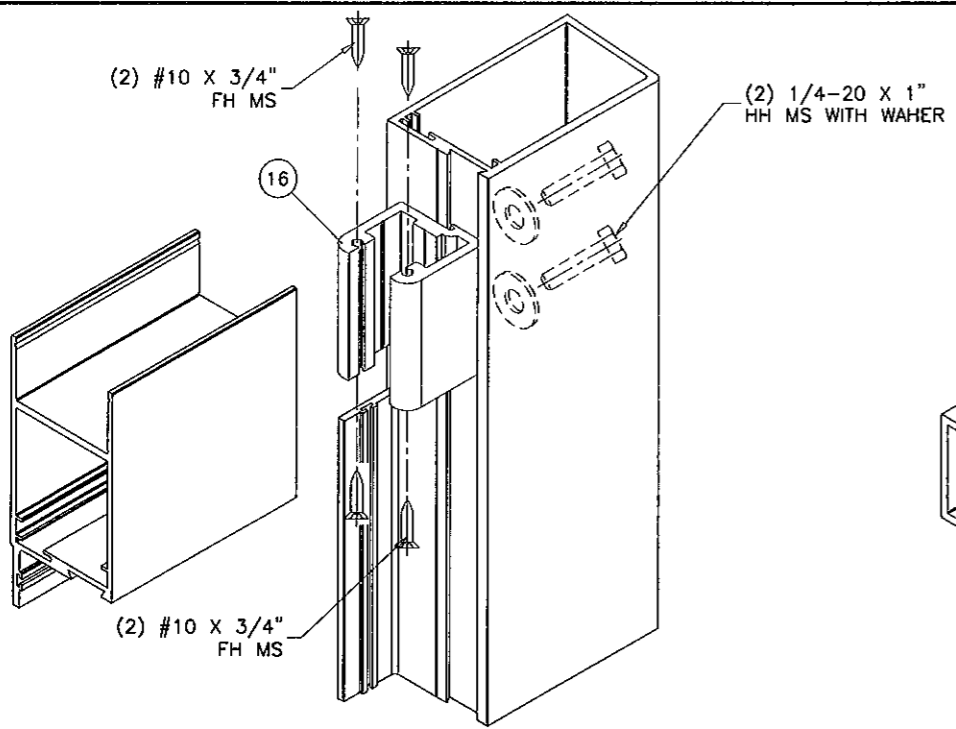
date: 07-10-12
scale: 3/8" = 1"
dr. by: HAMID
chk. by:

drawing no. **W12-38**
sheet 9 of 10

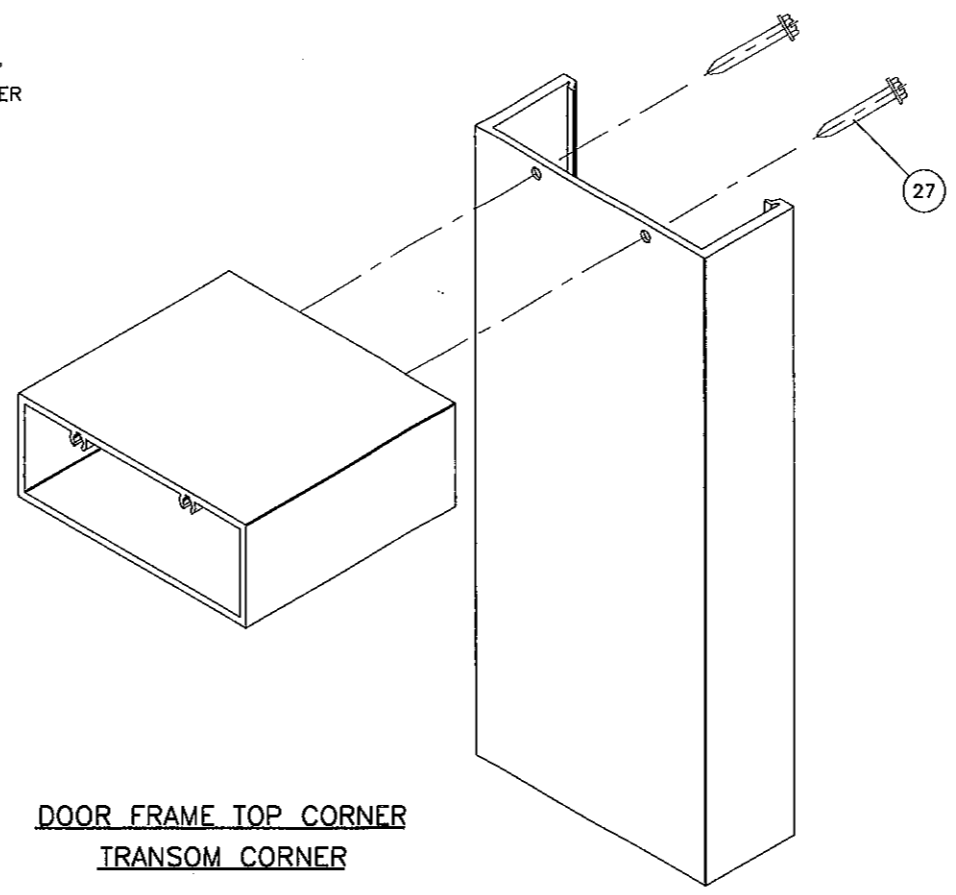
revisions:	
no.	date by description

date: 07-10-12	scale: 3/8" = 1"	dr. by: HAMID	chk. by:
----------------	------------------	---------------	----------

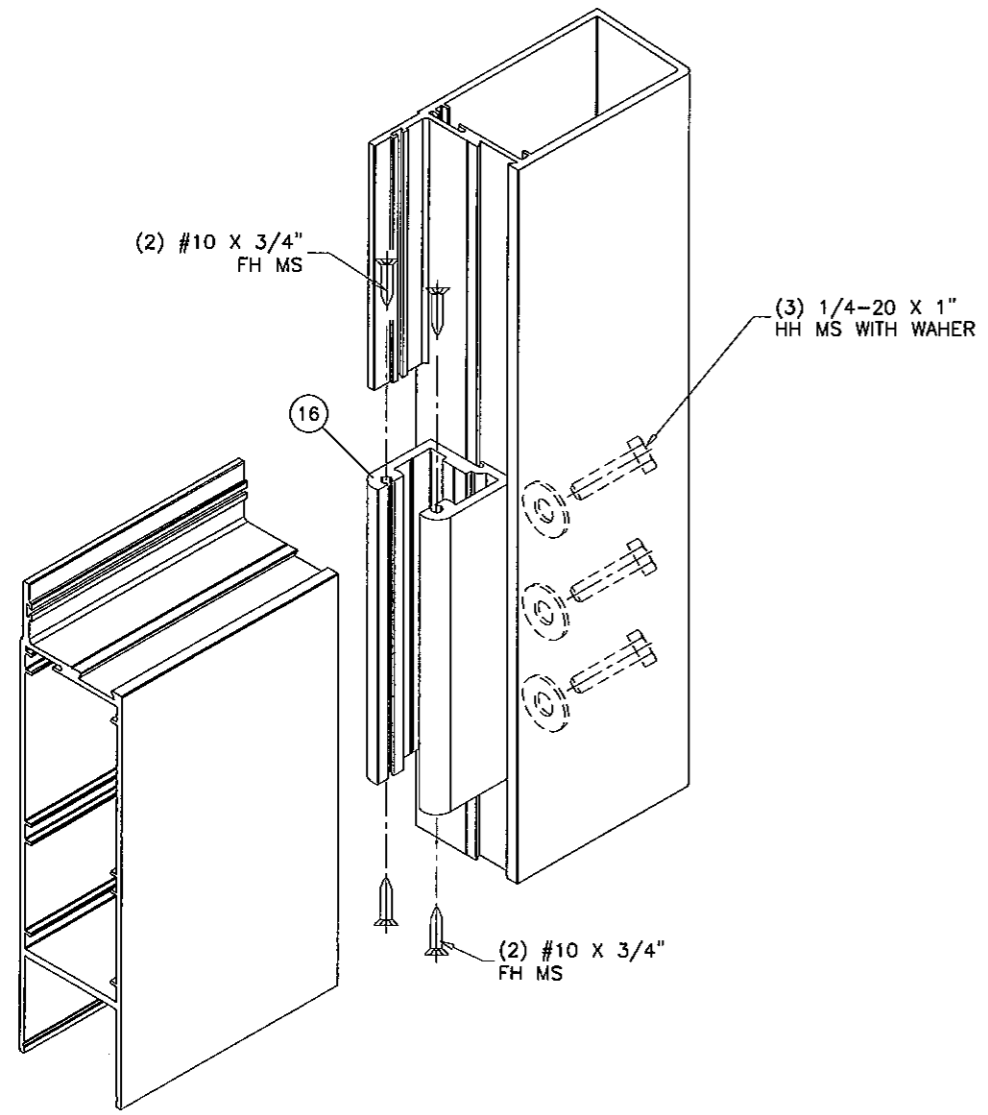
drawing no.
W12-38



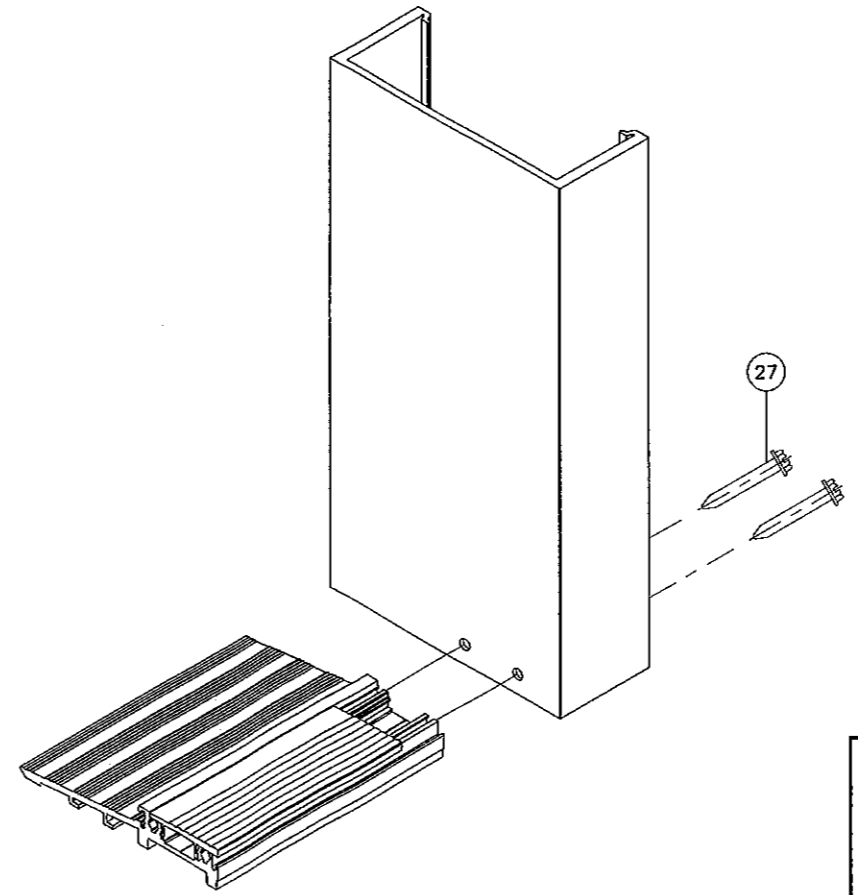
DOOR LEAF TOP CORNER



DOOR FRAME TOP CORNER
TRANSOM CORNER



DOOR LEAF BOTTOM CORNER



DOOR FRAME BOTTOM CORNER

Engr: JAVAD AHMAD
 CIVIL
 FLA. PE # 70592
 C.A.N. 3538
 SEP 14 2012

Approved as complying with the
 Florida Building Code
 Date Sept. 10, 2012
 NOA# 12-0713-10
 Miami Dade Product Control
 By Manuel Perez