



GYRO TECH™

by NABCO Entrances Inc.

Where quality and service are automatic

WWW.NABCOENTRANCES.COM

1-877-622-2694

JOB NAME: _____

LOCATION: _____

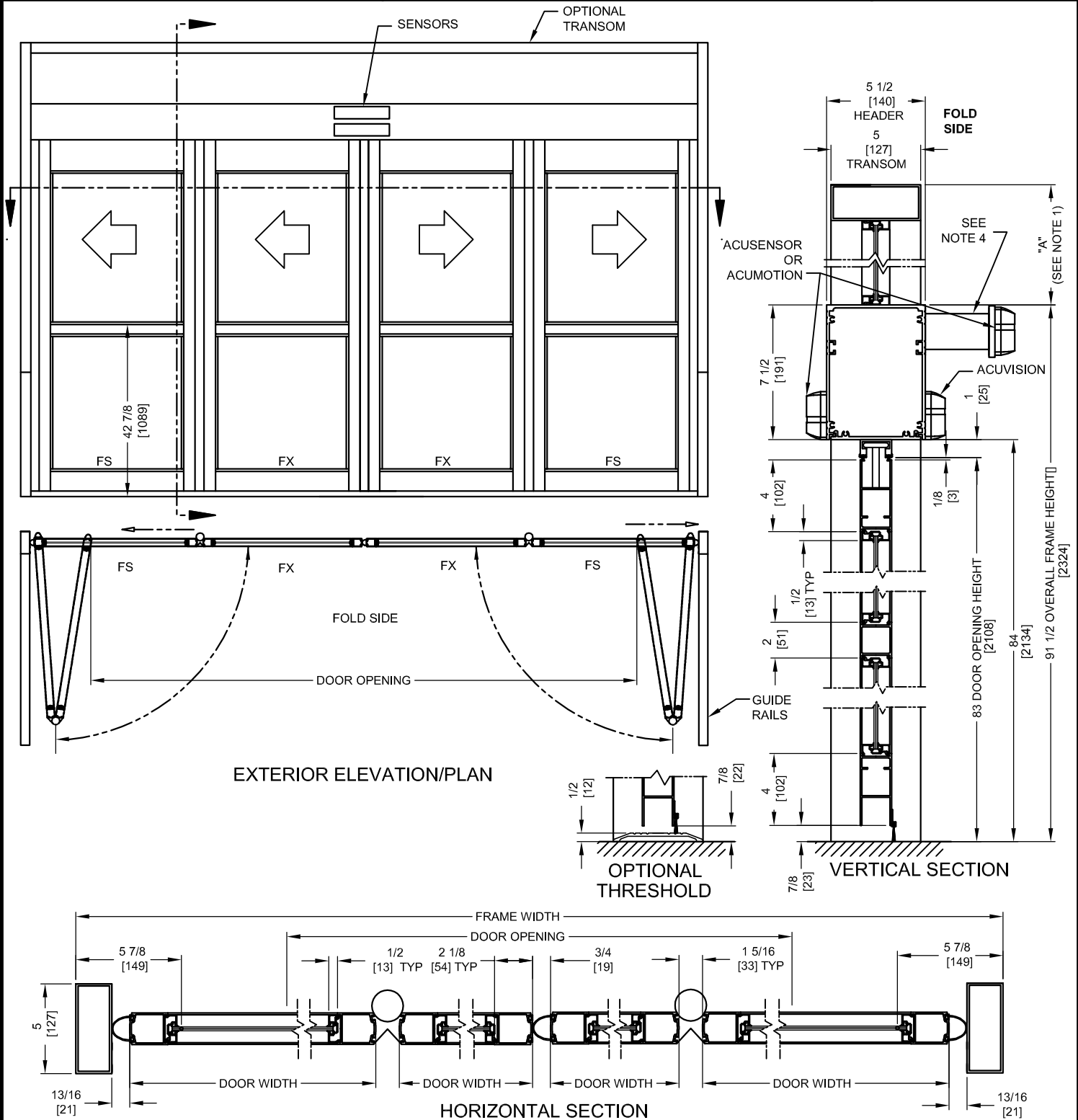
DISTRIBUTOR: _____

DOOR #: _____ DATE: _____

SHEET _____ OF _____

GT1400-02

BI-FOLD
DOOR



| | DOOR OPENING | FULL BREAKOUT OPENING | FRAME WIDTH | DOOR WIDTH |
|---------|------------------|-----------------------|--------------|---------------|
| MINIMUM | 52 3/8" [1330] | 64 1/4" [1632] | 6'-4" [1930] | 16 3/4" [425] |
| | 59 15/16" [1522] | 72 1/4" [1835] | 7'-0" [2134] | 18 3/4" [476] |
| | 65 9/16" [1665] | 78 1/4" [1988] | 7'-6" [2286] | 20 1/4" [514] |
| | 71 1/4" [1810] | 84 1/4" [2140] | 8'-0" [2438] | 21 3/4" [552] |
| | 76 15/16" [1954] | 90 1/4" [2292] | 8'-6" [2591] | 23 1/4" [591] |
| MAXIMUM | 82 5/8" [2099] | 96 1/4" [2445] | 9'-0" [2743] | 24 3/4" [629] |

- NOTES:
1. TRANSOM HEIGHT (DIMENSION "A") IS DETERMINED PER JOB REQUIREMENTS.
 2. POWER TO HEADER WILL BE 115VAC, 10 AMP PER OPERATOR PROVIDED BY ELECTRICAL CONTRACTOR.
 3. STANDARD FINISHES ARE 204 CLEAR AND 313 DARK BRONZE. OTHER FINISHES ARE AVAILABLE.
 4. SENSOR MOUNTING TUBE LENGTH VARIES BY DOOR WIDTH.
 5. MASONRY OPENING EQUALS FRAME WIDTH +1/2" AND FRAME HEIGHT +1/4".