



M420/422

Electromagnetic locks



Overview

The M400 Series line of electromagnetic locks from Schlage are designed with the customer in mind, to be robust, easy-to-install, and secure. The new bayonet mounting feature makes installs easier, allowing the installer to have their hands free during the mounting process. There is no need to consider door handing as all the M400 Series electromagnetic locks are both non-handed and symmetrical, allowing optimum placement of the magnet, no matter the application.

All M400 Series locks have automatic voltage sensing for 12 and 24 volts along with polarity protection to make wiring less complex. The M420 is tested and certified to meet or exceed UL1034 and BHMA 500 lb hold force requirements.

The M420 electromagnetic lock comes in two configurations to meet your specific security needs. The M420 provides basic security, while the M420P provides intelligent sensing and reporting features needed to integrate with access control systems. Additional options are available for the M420P. Kits are available for top jam, double door, and glass door applications.

Features and benefits

- Bayonet mount makes installation simpler by not requiring magnet to be held overhead while mounting screws are installed
- New design allows for RH/LH configuration in the field
- Armature mount allows armature to pivot, compensating for slight opening imperfections
- Limited lifetime warranty
- UL1034 burglary-resistant electronic locking mechanisms, UL10C positive pressure fire tests of door assemblies and ANSI/BHMA Grade 1 certifications
- 500 lb hold force
- See page 2 for additional features and options

Additional features

M420/M422

- **Automatic Voltage Selection (AVS)** senses the voltage applied to the lock and responds accordingly

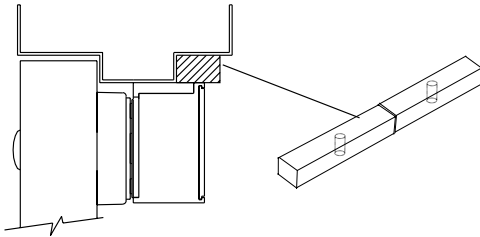
M420P/M422P

- **Magnetic Bond Sensor (MBS)** monitors the strength of the bond between the lock and armature so you know the door is secure
- **Door Position Switch (DPS)** monitors whether the door is open or closed
- **Relock Time Delay (RTD)** provides a relock delay that is adjustable from 0.5 to 30 seconds
- **Optional (P models only)**
 - **Anti-Tamper Switch (ATS)** provides an indication that the cover of the magnet is securely fastened to the lock and that the on board circuitry is secure
 - **MBS indicator (LED)** provides visual indication of magnetic bond at the lock

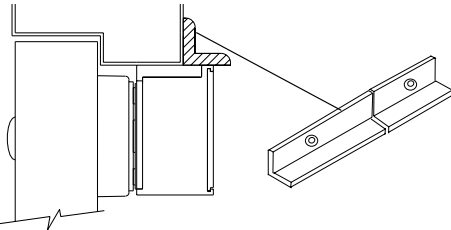
Options (for all)

- Herculite door bracket
- Top jamb (inswinging doors)

Filler Plate



Angle Bracket



M420/M422 electromagnetic lock specifications

Specification	M420/M420P	M422/M422P
Holding force	meets or exceeds BHMA standard of 500 lbs	meets or exceeds BHMA standard of 500 lbs
Input voltage (standard unit)	12/24 VDC	12/24 VDC
Current draw (amps standard unit)	.75A @ 12 VDC .38A @ 24 VDC	1.5A @ 12 VDC .76A @ 24 VDC
Automatic dual voltage	12/24 VDC	12/24 VDC
Height	2 1/2"	2 1/2"
Length	9"	18 1/16"
Width	1 3/8"	1 3/8"
Weight (approximate)	6 lbs	12 lbs
Certifications	UL1034, UL10C, ANSI/BHMA156.23	UL1034, UL10C, ANSI/BHMA156.23
Temperature	0° to 49°C (32° to 120° F)	0° to 49°C (32° to 120° F)
Wire gauge	14-22 AWG	14-22 AWG

Filler plates and angle brackets specifications

	M420	M422
Length	10 1/2"	20 5/8"

Filler plates

Width x Height		
1 1/4" x 1 1/8"	4201F	4221F
1 1/4" x 1 1/4"	4202F	4222F
1 1/4" x 3 3/8"	4203F	4223F
1 1/4" x 1 1/2"	4204F	4224F
1 1/4" x 5/8"	4205F	4225F
3/4" x 1 1/2"	4206F	4226F
3/4" x 5/8"	4207F	4227F
3/4" x 3/4"	4208F	4228F

Angle brackets

Width x Height	Plate no.	Plate no.
1" x 1"	4201A	4221A
1 1/2" x 1"	4202A	4222A
1 1/2" x 1 1/2"	4203A	4223A
1 1/2" x 2"	4204A	4224A
1 1/2" x 2 1/2"	4205A	4225A

Allegion, the Allegion logo, Schlage, and the Schlage logo are trademarks of Allegion plc, its subsidiaries and/or affiliates in the United States and other countries. All other trademarks are the property of their respective owners.

About Allegion

Allegion (NYSE: ALLE) creates peace of mind by pioneering safety and security. As a \$2 billion provider of security solutions for homes and businesses, Allegion employs more than 7,800 people and sells products in more than 120 countries across the world. Allegion comprises 23 global brands, including strategic brands CISA®, Interflex®, LCN®, Schlage® and Von Duprin®. For more, visit www.allegion.com.