



M450/452

Electromagnetic locks



Overview

The M400 Series line of electromagnetic locks from Schlage are designed with the customer in mind, to be robust, easy-to-install, and secure. The new bayonet mounting feature makes installs easier, allowing the installer to have their hands free during the mounting process. There is no need to consider door handing, as all the M400 Series electromagnetic locks are both non-handed and symmetrical, allowing optimum placement of the magnet, no matter the application.

All M400 Series locks have automatic voltage sensing for 12 and 24 volts along with polarity protection to make wiring less complex. The M450 is tested and certified to meet or exceed UL1034 and BHMA 1000 lb hold force requirements.

The M450 electromagnetic lock comes in two configurations to meet your specific security needs. The M450 provides basic security, while the M450P provides intelligent sensing and reporting features needed to integrate with access control systems. Additional options are available for the M450P. Kits are available for top jam, double door, and glass door applications.

Features and benefits

- Bayonet mount makes installation simpler by not requiring magnet to be held overhead while mounting screws are installed
- New design allows for RH/LH configuration in the field
- Armature mount allows armature to pivot, compensating for slight opening imperfections
- Limited lifetime warranty
- UL1034 burglary-resistant electronic locking mechanisms, UL10C positive pressure fire tests of door
- 1000 lb hold force
- See page 2 for additional features and options

Additional features

M450/M452

- **Automatic Voltage Selection (AVS)** senses the voltage applied to the lock and responds accordingly

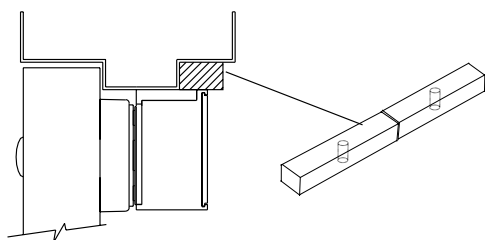
M450P/M452P

- **Magnetic Bond Sensor (MBS)** monitors the strength of the bond between the lock and armature so you know the door is secure
- **Door Position Switch (DPS)** monitors whether the door is open or closed
- **Relock Time Delay (RTD)** provides a relock delay that is adjustable from 0.5 to 30 seconds
- **Optional (P models only)**
 - **Anti-Tamper Switch (ATS)** provides an indication that the cover of the magnet is securely fastened to the lock and that the on board circuitry is secure
 - **MBS Indicator (LED)** provides visual indication of magnetic bond at the lock

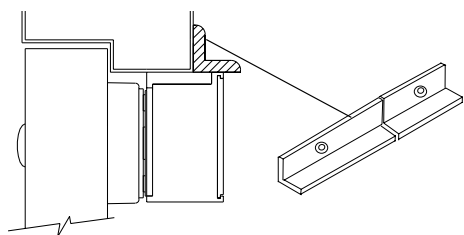
Options (for all)

- Herculite door bracket
- Top jamb (inswinging doors)

Filler Plate



Angle Bracket



M450/M452 electromagnetic lock specifications

| Specification | M450/M450P | M452/M452P |
|-----------------------------------|--|--------------------------------|
| Holding force | meets or exceeds BHMA standard of 1000 lbs | 1000 lbs per door leaf |
| Input voltage (standard unit) | 12/24 VDC | 12/24 VDC |
| Current draw (amps standard unit) | .75A @ 12 VDC .38A @ 24 VDC | 1.5A @ 12 VDC .75A @ 24 VDC |
| Automatic dual voltage | 12/24 VDC | 12/24 VDC |
| Height | 3" | 3" |
| Length | 10 1/4" | 20 9/16" |
| Width | 1 3/4" | 1 3/4" |
| Weight (approximate) | 10 lbs | 20 lbs |
| Certifications | UL1034, UL10C, ANSI/BHMA156.23 | UL1034, UL10C, ANSI/BHMA156.23 |
| Temperature | 0° to 49°C (32° to 120° F) | 0° to 49°C (32° to 120° F) |
| Wire gauge | 14-22 AWG | 14-22 AWG |

Filler plates and angle brackets specifications

| | M450 |
|--------|---------|
| Length | 10 1/2" |

Filler plates (order 2 if purchasing a double lock)

| Width x Height | |
|----------------|-------|
| 1 1/4" x 1/8" | 4501F |
| 1 1/4" x 1/4" | 4502F |
| 1 1/4" x 3/8" | 4503F |
| 1 1/4" x 1/2" | 4504F |
| 1 1/4" x 5/8" | 4505F |
| 3/4" x 1/2" | 4506F |
| 3/4" x 5/8" | 4507F |
| 3/4" x 3/4" | 4508F |

Angle brackets (order 2 if purchasing a double lock)

| Width x Height | Plate no. |
|-----------------|-----------|
| 1" x 1" | 4501A |
| 1 1/2" x 1" | 4502A |
| 1 1/2" x 1 1/2" | 4503A |
| 1 1/2" x 2" | 4504A |
| 1 1/2" x 2 1/2" | 4505A |

Allegion, the Allegion logo, Schlage, and the Schlage logo are trademarks of Allegion plc, its subsidiaries and/or affiliates in the United States and other countries. All other trademarks are the property of their respective owners.

About Allegion

Allegion (NYSE: ALLE) creates peace of mind by pioneering safety and security. As a \$2 billion provider of security solutions for homes and businesses, Allegion employs more than 7,800 people and sells products in more than 120 countries across the world. Allegion comprises 23 global brands, including strategic brands CISA®, Interflex®, LCN®, Schlage® and Von Duprin®. For more, visit www.allegion.com.