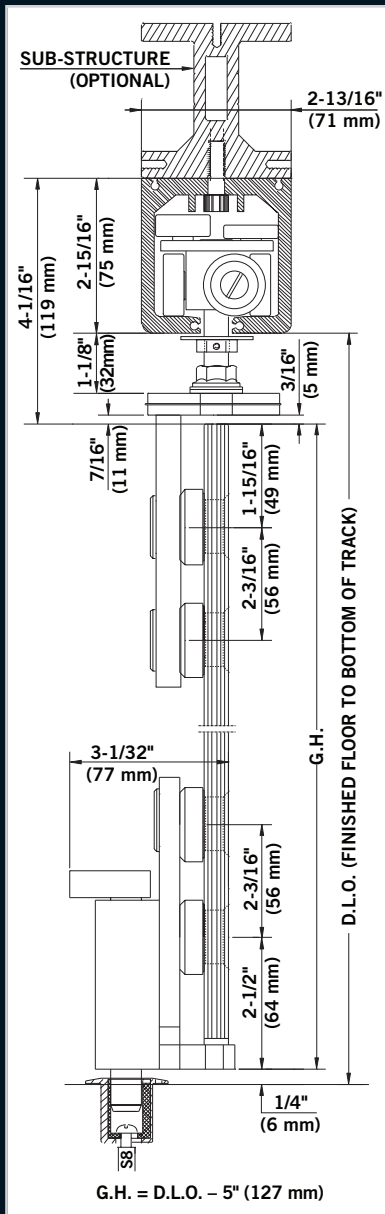


DORMA GLAS

HSW-GP Sliding Glass Walls



Uninterrupted appearance using minimal hardware

The HSW-GP system provides a harmonious and consistent look with the use of single point fixings.

- Suitable for both inline and curved configurations.
- Stainless steel fittings provide flush-mounted attachments compatible with contemporary architecture.
- Accommodates 3/8" (10 mm) and 1/2" (12 mm) glass.
- Can be used with laminated tempered glass.

- Minimal hardware maximizes all-glass look.
- No floor track.

Panel Limits:

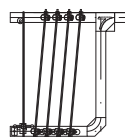
- Max Height 120" (3000 mm)
- Max Weight 200 lb (90 kg)
- Min Width 24" (600 mm)
- Max Width 42" (1060 mm)

Standard Finish:

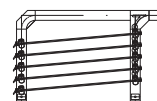
- Satin Stainless

Lead Time:

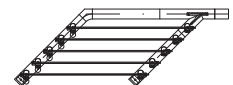
- 7 weeks. System Fabricated in Germany.



90° Perpendicular Stack



90° Parallel Stack



135° Parallel Stack

DORMA Glas HSW Sliding Glass Walls

The DORMA Substructure

The new DORMA substructure system is of modular construction and is designed to significantly reduce on-site installation cost and time. This concept also offers the particular flexibility required to overcome structural constraints, such as the presence of air conditioning shafts or pre-existing electrical systems in the ceiling.

The DORMA substructure consists primarily of the following components: substructure profile with modules for branching to the stacking area, threaded rods for suspension of the profile(s), and standard square section tubes with appropriate fixings and ceiling brackets for bracing and stiffening the construction.

Various bolting channels run the whole length of the profile, allowing bolts to be inserted easily at any location within the system configuration. So there is no need for pre-drilling and thread cutting in order to mount the track rails onto the substructure.

Bolting channels on both sides of the profile can be used, e.g. for fixing the brackets needed for attaching the ceiling retention elements.

Depending on the weight of the system and the permitted deflection, it is possible to

span a distance of up to 117" (3 m) between 2 suspension points.

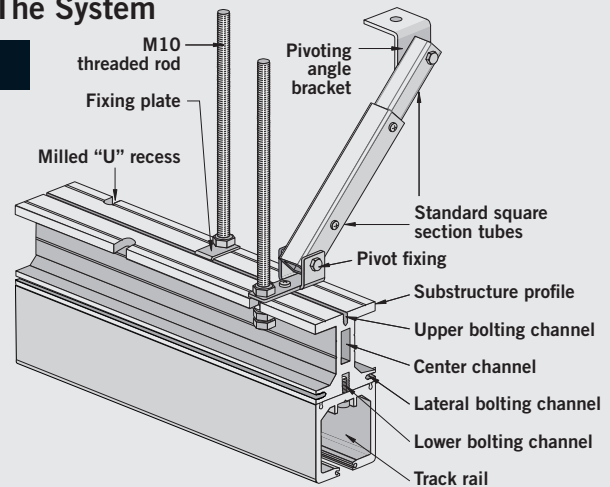
Standard flat steel bars can be inserted in the center channel to further stiffen the profile, particularly in the area of the joints. This means that just one suspension point in the vicinity of the joint can be provided instead of the two—one either side of the joint—that are usually needed.

With a maximum load (panel weight) of 330 lb (150 kg) and a permitted deflection of the substructure with track rail of 1/8" (3 mm), the interval between 2 suspension points must be no greater than 117" (3 m). The diagram *Example Load Values* shows other values for different loads.

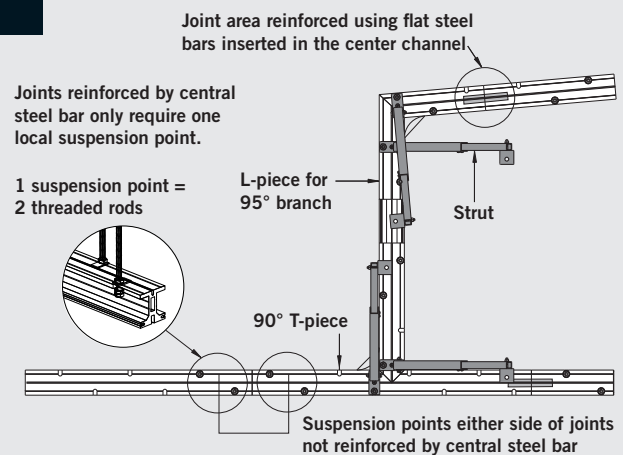
The individual components are coordinated to ensure safe integration. Joints in the substructure are offset to those in the track rails so that individual joints coincide with continuous material in all cases.

Provided that the track rails are adequately bolted to the substructure, gaps of up to 11" (279 mm) in straight runs and 5" (127 mm) in stacking areas measured from one suspension point to the next are permitted in the substructure.

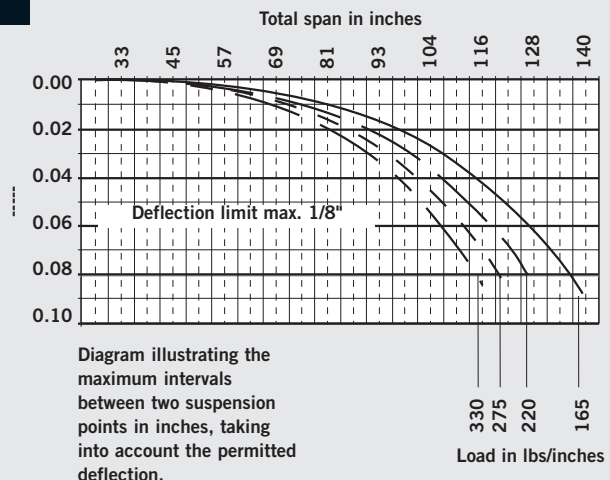
The System



View from Above



Example Load Values



DORMA Glas, Inc.
1520 Jabez Run
Suite 303
Millersville, MD 21108
Tel: 410.923.0890
Toll Free: 800.451.0649
Fax 410.923.3060
E-mail: glas@dorma-usa.com
www.dorma-usa.com