



# M490/492

## Electromagnetic locks



### Overview

The M400 Series line of electromagnetic locks from Schlage are designed with the customer in mind, to be robust, easy-to-install, and secure. The new bayonet mounting feature makes installs easier, allowing the installer to have their hands free during the mounting process. There is no need to consider door handing, as all the M400 Series electromagnetic locks are both non-handed and symmetrical, allowing optimum placement of the magnet no matter the application.

All M400 Series locks have automatic voltage sensing for 12 and 24 volts along with polarity protection to make wiring less complex. The M490 is tested and certified to meet or exceed UL1034 and BHMA 1500 lb hold force requirements.

The M490 electromagnetic lock comes in two configurations to meet your specific security needs. The M490 provides basic security, while the M490P provides intelligent sensing and reporting features needed to integrate with access control systems. Additional options are available for the M490P. Kits are available for top jam, double door, and glass door applications.

### Features and benefits

- Bayonet mount makes installation simpler by not requiring magnet to be held overhead while mounting screws are installed
- New design allows for RH/LH configuration in the field
- Armature mount allows armature to pivot, compensating for slight opening imperfections
- Limited lifetime warranty
- UL1034 burglary-resistant electronic locking mechanisms, UL10C positive pressure fire tests of door assemblies and ANSI/BHMA Grade 1 certifications
- 1500 lb hold force
- See page 2 for additional features and options

## Additional features

### M490/M492

- Automatic Voltage Selection (AVS) senses the voltage applied to the lock and responds accordingly

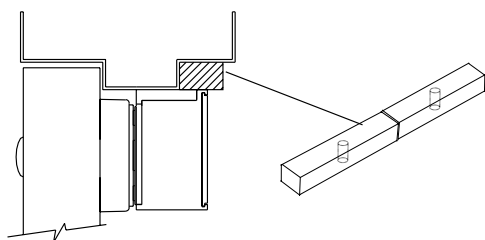
### M490P/M492P

- Magnetic Bond Sensor (MBS) monitors the strength of the bond between the lock and armature so you know the door is secure
- Door Position Switch (DPS) monitors whether the door is open or closed
- Relock Time Delay (RTD) provides a relock delay that is adjustable from 0.5 to 30 seconds
- Optional
  - Anti-Tamper Switch (ATS) provides an indication that the cover of the magnet is securely fastened to the lock and that the on board circuitry is secure
  - MBS Indicator (LED) provides visual indication of magnetic bond at the lock

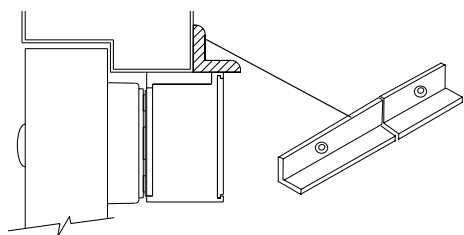
### Options (for all)

- Herculite door bracket
- Top jamb (inswinging doors)

### Filler Plate



### Angle Bracket



## M490/M492 electromagnetic lock specifications

Specification	M490/M490P	M492/M492P
Holding force	Meets or exceeds BHMA standard of 1500 lbs	Meets or exceeds BHMA standard of 1500 lbs
Input voltage (standard unit)	12/24 VDC	12/24 VDC
Current draw (amps standard unit)	.65A @ 12 VDC .35A @ 24 VDC	1.3A @ 12 VDC .7A @ 24 VDC
Automatic dual voltage	12/24 VDC	12/24 VDC
Height	3"	3"
Length	12 1/2"	25 1/16"
Width	1 3/4"	1 3/4"
Weight (approximate)	14 lbs	28 lbs
Certifications	UL10C, UL1034, ANSI/BHMA A156.23	UL10C, UL1034, ANSI/BHMA A156.23
Temperature	0° to 49°C (32° to 120° F)	0° to 49°C (32° to 120° F)
Wire gauge	14-22 AWG	14-22 AWG

## Filler plates and angle brackets specifications

	M490	M492
Length	10 1/2"	20 5/8"

### Filler plates

Width x Height		
1 1/4" x 1/8"	4901F	4921F
1 1/4" x 1/4"	4902F	4922F
1 1/4" x 3/8"	4903F	4923F
1 1/4" x 1/2"	4904F	4924F
1 1/4" x 5/8"	4905F	4925F
3/4" x 1/2"	4906F	4926F
3/4" x 5/8"	4907F	4927F
3/4" x 3/4"	4908F	4928F

### Angle brackets

Width x Height	Plate no.	Plate no.
1" x 1"	4901A	4921A
1 1/2" x 1"	4902A	4922A
1 1/2" x 1 1/2"	4903A	4923A
1 1/2" x 2"	4904A	4924A
1 1/2" x 2 1/2"	4905A	4925A

Allegion, the Allegion logo, Schlage, and the Schlage logo are trademarks of Allegion plc, its subsidiaries and/or affiliates in the United States and other countries. All other trademarks are the property of their respective owners.

## About Allegion

Allegion (NYSE: ALLE) creates peace of mind by pioneering safety and security. As a \$2 billion provider of security solutions for homes and businesses, Allegion employs more than 7,800 people and sells products in more than 120 countries across the world. Allegion comprises 23 global brands, including strategic brands CISA®, Interflex®, LCN®, Schlage® and Von Duprin®. For more, visit [www.allegion.com](http://www.allegion.com).