



DEPARTMENT OF REGULATORY AND ECONOMIC RESOURCES (RER)
BOARD AND CODE ADMINISTRATION DIVISION

NOTICE OF ACCEPTANCE (NOA)

MIAMI-DADE COUNTY
PRODUCT CONTROL SECTION

11805 SW 26 Street, Room 208
T (786) 315-2590 F (786) 315-2599

www.miamidade.gov/economy

Enviralum Industries, Inc.
5100 NW 72nd Avenue
Miami, FL 33166

SCOPE:

This NOA is being issued under the applicable rules and regulations governing the use of construction materials. The documentation submitted has been reviewed and accepted by Miami-Dade County RER - Product Control Section to be used in Miami Dade County and other areas where allowed by the Authority Having Jurisdiction (AHJ).

This NOA shall not be valid after the expiration date stated below. The Miami-Dade County Product Control Section (In Miami Dade County) and/or the AHJ (in areas other than Miami Dade County) reserve the right to have this product or material tested for quality assurance purposes. If this product or material fails to perform in the accepted manner, the manufacturer will incur the expense of such testing and the AHJ may immediately revoke, modify, or suspend the use of such product or material within their jurisdiction. RER reserves the right to revoke this acceptance, if it is determined by Miami-Dade County Product Control Section that this product or material fails to meet the requirements of the applicable building code.

This product is approved as described herein, and has been designed to comply with the Florida Building Code, including the High Velocity Hurricane Zone.

DESCRIPTION: Series "ENV-350" Outswing Aluminum Entrance Door – L.M.I.

APPROVAL DOCUMENT: Drawing No. W12-30, titled "Series ENV-350 Outswing Entrance Door (L.M.I.)", sheets 1 through 7, 7.1, 7.2, 7.3, 8, 9 and 10 of 10, dated 06/08/12, with revision C dated 05/11/15, prepared by Al-Farooq Corporation, signed and sealed by Javad Ahmad, P.E., bearing the Miami-Dade County Product Control Revision stamp with the Notice of Acceptance number and expiration date by the Miami-Dade County Product Control Section.

MISSILE IMPACT RATING: Large and Small Missile Impact Resistant

LABELING: Each unit shall bear a permanent label with the manufacturer's name or logo, city, state, model/series, and following statement: "Miami-Dade County Product Control Approved", unless otherwise noted herein.

RENEWAL of this NOA shall be considered after a renewal application has been filed and there has been no change in the applicable building code negatively affecting the performance of this product.

TERMINATION of this NOA will occur after the expiration date or if there has been a revision or change in the materials, use, and/or manufacture of the product or process. Misuse of this NOA as an endorsement of any product, for sales, advertising or any other purposes shall automatically terminate this NOA. Failure to comply with any section of this NOA shall be cause for termination and removal of NOA.

ADVERTISEMENT: The NOA number preceded by the words Miami-Dade County, Florida, and followed by the expiration date may be displayed in advertising literature. If any portion of the NOA is displayed, then it shall be done in its entirety.

INSPECTION: A copy of this entire NOA shall be provided to the user by the manufacturer or its distributors and shall be available for inspection at the job site at the request of the Building Official.

This NOA revises NOA# 12-0706.05 and consists of this page 1 and evidence pages E-1 and E-2, as well as approval document mentioned above.

The submitted documentation was reviewed by Manuel Perez, P.E.



MP
6/24/15

NOA No. 15-0423.04
Expiration Date: September 17, 2017
Approval Date: June 25, 2015
Page 1

Enviralum Industries, Inc.

NOTICE OF ACCEPTANCE: EVIDENCE SUBMITTED

A. DRAWINGS

1. Manufacturer's die drawings and sections.
(Submitted under previous NOA No. 12-0706.05)
2. Drawing No. **W12-30**, titled "Series ENV-350 Outswing Entrance Door (L.M.I.)" sheets 1 through 7, 7.1, 7.2, 7.3, 8, 9 and 10 of 10, dated 06/08/12, with revision C dated 05/11/15, prepared by Al-Farooq Corporation, signed and sealed by Javad Ahmad, P.E.

B. TESTS

1. Test reports on: 1) Air Infiltration Test, per FBC, TAS 202-94
2) Uniform Static Air Pressure Test, Loading per FBC TAS 202-94
3) Water Resistance Test, per FBC, TAS 202-94
along with marked-up drawings and installation diagram of an outswing aluminum double entrance door, prepared by Fenestration Testing Laboratory, Inc., Test Report No. **FTL-7752**, dated 09/10/14, signed and sealed by Idalmis Ortega, P.E.
2. Test reports on: 1) Air Infiltration Test, per FBC, TAS 202-94
2) Uniform Static Air Pressure Test, Loading per FBC TAS 202-94
3) Water Resistance Test, per FBC, TAS 202-94
4) Forced Entry Test, per FBC 2411.3.2.1, and TAS 202-94
5) Large Missile Impact Test per FBC, TAS 201-94
6) Cyclic Wind Pressure Loading per FBC, TAS 203-94
along with marked-up drawings and installation diagram of an outswing aluminum double entrance door, prepared by Fenestration Testing Laboratory, Inc., Test Report No. **FTL-6920**, dated 05/19/12, signed and sealed by Marlin D. Brinson, P.E. with addendum letters dated 09/06/12 and 09/12/12, signed by Manny Sanchez, CEO
(Submitted under previous NOA No. 12-0706.05)
3. Test reports on: 1) Air Infiltration Test, per FBC, TAS 202-94
2) Uniform Static Air Pressure Test, Loading per FBC TAS 202-94
3) Water Resistance Test, per FBC, TAS 202-94
4) Large Missile Impact Test per FBC, TAS 201-94
5) Cyclic Wind Pressure Loading per FBC, TAS 203-94
6) Drop Test per ANSI Z97.1-2009
along with marked-up drawings and installation diagram of an aluminum window wall system, prepared by Fenestration Testing Laboratory, Inc., Test Report No. **FTL-6678**, dated 03/20/12, and addendum letter dated 08/23/12, all signed and sealed by Marlin D. Brinson, P.E.
(Submitted under previous NOA No. 12-0706.05)


Manuel Perez, P.E.
Product Control Examiner

NOA No. 15-0423.04

Expiration Date: September 17, 2017

Approval Date: June 25, 2015

Enviralum Industries, Inc.

NOTICE OF ACCEPTANCE: EVIDENCE SUBMITTED

C. CALCULATIONS

1. Anchor verification calculations and structural analysis, complying with **FBC-5th Edition (2014)**, dated 01/20/15, prepared by Al-Farooq Corporation, signed and sealed by Javad Ahmad, P.E.
2. Glazing complies with **ASTM E1300-09**

D. QUALITY ASSURANCE

1. Miami-Dade Department of Regulatory and Economic Resources (RER).

E. MATERIAL CERTIFICATIONS


1. Notice of Acceptance No. **11-0624.02** issued to **E.I. DuPont DeNemours & Co., Inc.** for their "**DuPont SentryGlas® Interlayer**" dated 08/25/11, expiring on 01/14/17.
2. Notice of Acceptance No. **13-0129.27** issued to **E.I. DuPont DeNemours & Co., Inc.** for their "**DuPont Butacite® PVB Interlayer**" dated 04/11/13, expiring on 12/11/16.

F. STATEMENTS

1. Statement letter of conformance, complying with **FBC-5th Edition (2014)**, and of no financial interest, dated January 20, 2015, issued by Al-Farooq Corporation, signed and sealed by Javad Ahmad, P.E.
2. Testing Proposal issued by Product Control, dated 10/07/13, signed by Jaime Gascon, P.E., Product Control Supervisor.
3. Testing Proposal No. **10-1236** issued by Product Control, dated 12/20/10, revised on 01/05/11, signed by Manuel Perez, P.E.
(Submitted under NOA No.12-0820.08)

G. OTHERS

1. Notice of Acceptance No. **12-0706.05**, issued to Enviralum Industries, Inc. for their Series "**ENV-350**" Outswing Aluminum Entrance Door – L.M.I., approved on 09/17/12 and expiring on 09/17/17.


Manuel Perez, P.E.
Product Control Examiner
NOA No. 15-0423.04
Expiration Date: September 17, 2017
Approval Date: June 25, 2015

INDEX OF DRAWING	
SHEET NO.	DESCRIPTION
1	COVER PAGE, GENERAL NOTES, GLAZING DETAILS
2	SINGLE & DOUBLE DOORS TYP. ELEVATIONS & CAPACITY
3	SINGLE & DOUBLE DOORS WITH TRANSOM, ELEVATIONS & CAPACITY CHART
4	LOCK OPTIONS & LIMITATIONS
5	HORIZONTAL RAILS, HEAD/SILL DETAILS & TYPICAL ANCHORS
6	VERTICAL STILES, JAMB DETAILS
7	TRANSOM HEAD/SILL/JAMB DETAILS
7.1 & 7.2	WATER INFILTRATION RESISTANT DOOR DETAILS
7.3	ADA COMPLIANT THRESHOLD DETAILS
8	PARTS DRAWINGS
9	BILL OF MATERIALS & HINGE OPTIONS
10	CORNER CONSTRUCTION DETAILS

**SERIES ENV-350
ALUMINUM OUTSWING ENTRANCE DOOR**

DOORS WITH STANDARD SECTION DETAILS NOT APPROVED FOR INSTALLATIONS WHERE WATER INFILTRATION RESISTANCE IS REQUIRED. SEE SHEETS 5 & 6 FOR DETAILS.

DOORS WITH WATER RESISTANT COMPONENTS APPROVED FOR INSTALLATIONS WHERE WATER INFILTRATION RESISTANCE IS REQUIRED. SEE SHEETS 7.1 & 7.2 FOR DETAILS.

THESE DOORS MAY BE USED IN CONJUNCTION WITH MIAMI-DADE COUNTY APPR'D LARGE MISSILE IMPACT RESISTANT STOREFRONT SYSTEM. LOWER DESIGN PRESSURE FROM DOOR OR STOREFRONT APPROVAL WILL APPLY TO ENTIRE SYSTEM.

CODE REQUIREMENTS FOR SAFEGUARDS MUST BE OBSERVED.

THIS PRODUCT HAS BEEN DESIGNED AND TESTED TO COMPLY WITH THE REQUIREMENTS OF THE FLORIDA BUILDING CODE INCLUDING HIGH VELOCITY HURRICANE ZONE (HVHZ).

WOOD BUCKS BY OTHERS, MUST BE ANCHORED PROPERLY TO TRANSFER LOADS TO THE STRUCTURE.

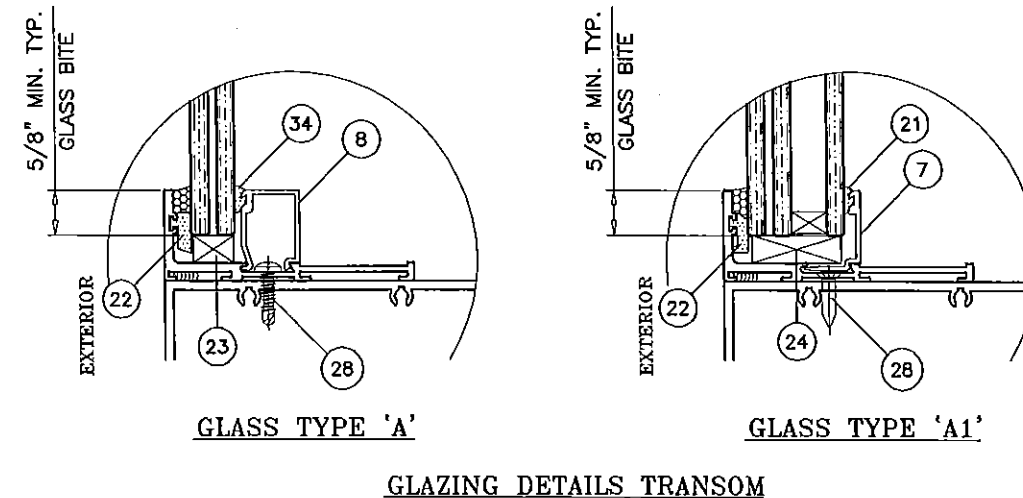
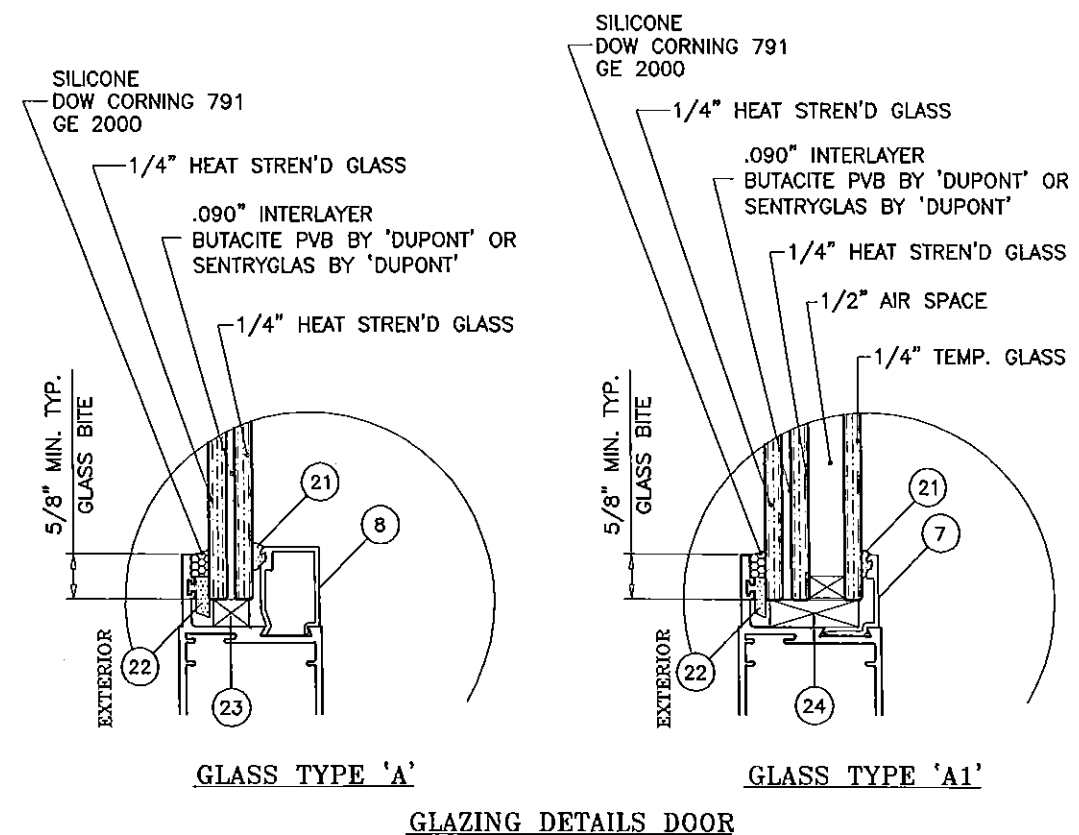
ANCHORS SHALL BE AS LISTED, SPACED AS SHOWN ON DETAILS, ANCHORS EMBEDMENT TO BASE MATERIAL SHALL BE BEYOND WALL DRESSING OR STUCCO.

ANCHORING OR LOADING CONDITIONS NOT SHOWN IN THESE DETAILS ARE NOT PART OF THIS APPROVAL.

A LOAD DURATION INCREASE IS USED IN DESIGN OF ANCHORS INTO WOOD ONLY.

ALL SHIMS TO BE HIGH IMPACT, NON-METALLIC AND NON-COMPRESSIBLE.

MATERIALS INCLUDING BUT NOT LIMITED TO STEEL/METAL SCREWS, THAT COME INTO CONTACT WITH OTHER DISSIMILAR MATERIALS SHALL MEET THE REQUIREMENTS OF THE FLORIDA BUILDING CODE.



INSTRUCTIONS:

USE DRAWING AS FOLLOWS.

1. SELECT SINGLE OR DOUBLE DOORS FROM SHEET 2 OR SINGLE OR DOUBLE DOORS WITH TRANSOM FROM SHEET 3.
2. SELECT DOOR AND FRAME SIZE.
3. DETERMINE IF THE DOOR WILL BE INSTALLED IN AN OPENING WHERE THE WATER REQUIREMENT IS NEEDED OR NOT.
4. DETERMINE Dp RATING FROM SHEET 2 OR 3.
5. SELECT GLASS TYPE A OR A1 FROM SHEET 1.
6. SELECT LOCK OPTION AND CORRESPONDING MAX. DESIGN LOAD FROM SHEET 4.
7. SELECT ANCHORING CONDITION AND CORRESPONDING ANCHOR TYPE AND NUMBER OF ANCHORS FROM SHEET 5.
8. SELECT JAMB OPTIONS FROM SHEET 6.
9. SELECT HINGE OPTION FROM SHEET 9.
10. DETERMINE FINAL DESIGN PRESSURE FOR THE SYSTEM, TAKEN AS THE LOWEST OF ALL Dp VALUES OBTAINED.

DOORS ARE RATED FOR LARGE & SMALL MISSILE IMPACT. SHUTTERS ARE NOT REQUIRED.

Engr: JAVAD AHMAD
CIVIL
FLA. PE # 70592
C.A.N. 3538
JUN 23 2015

PRODUCT REVISED
as complying with the Florida
Building Code
Acceptance No 15-0423.04
Expiration Date Sept. 17, 2017
By Manuel Perez
Miami Dade Product Control

afc
AL-FAROOQ CORPORATION
ENGINEERS & PRODUCT DEVELOPMENT
1235 S.W. 87 AVE
MIAMI, FLORIDA 33174
TEL (305) 264-8100 FAX (305) 262-6978
COMP-ANL\W12-30ENV

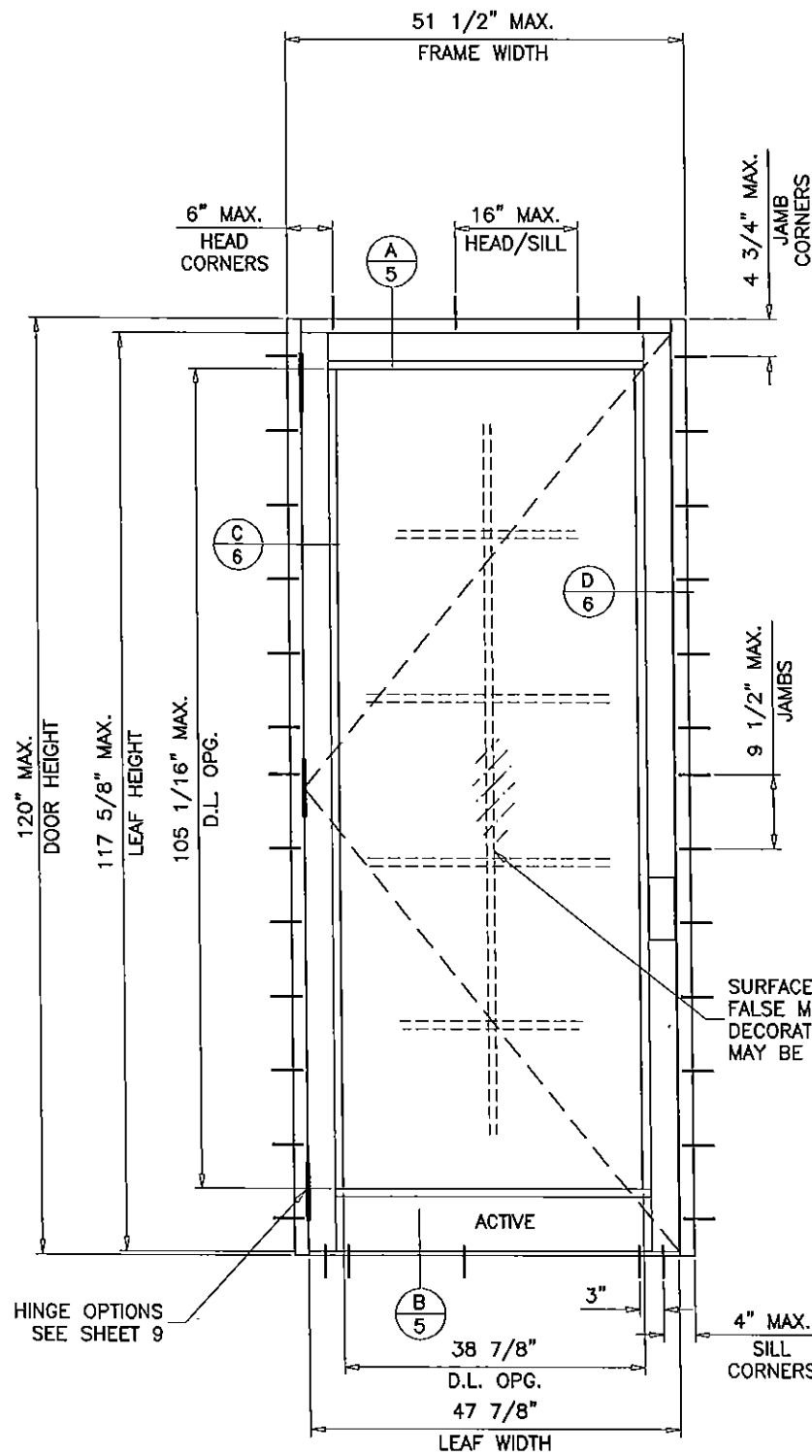
SERIES ENV-350 OUTSWING ENTRANCE DOOR (L.M.I.)
ENVRALUM INDUSTRIES INC.
5110 N.W. 72 AVENUE BLDG. C
MIAMI, FL. 33166
TEL (305) 752-4411 FAX (305) 406-3877

no	date	description	by
A	08.23.12	REV. PER PER COMMENTS	
B	12.19.14	GENERAL REVISION	
C	05.11.15	REV. PER PER COMMENTS	

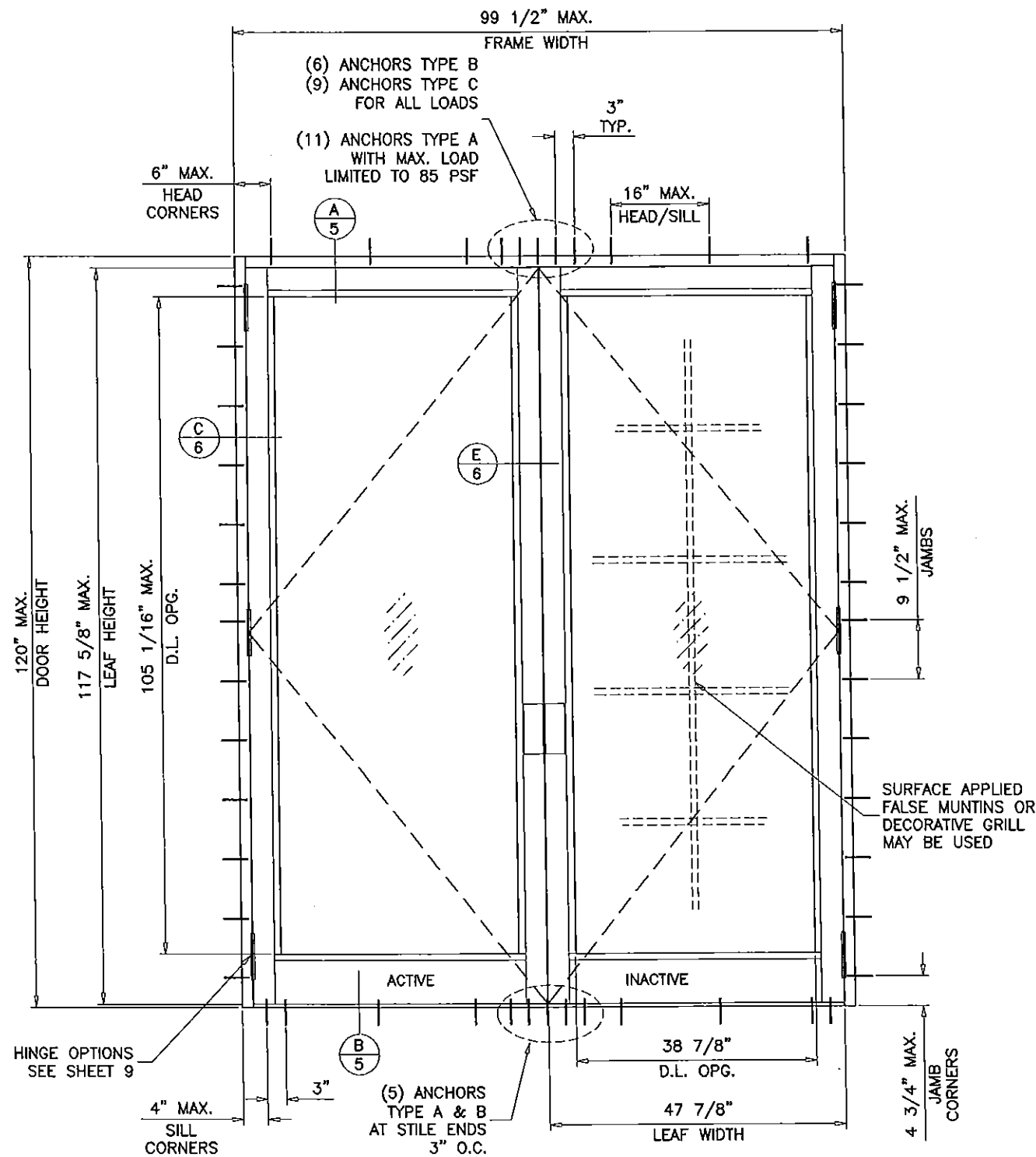
date: 06-08-12
scale: 3/8" = 1"
dr. by: HAMID
chk. by:

drawing no.
W12-30

sheet 1 of 10



(X)



(XX)

DESIGN PRESSURE RATING		IMPACT RATING	REMARKS
POSITIVE	NEGATIVE		
+60 PSF	-100 PSF	LARGE AND SMALL MISSILE IMPACT RESISTANT	SEE SHEET 4 FOR LOCK OPTIONS AND LIMITATIONS
+100 PSF	-100 PSF		
WITH WATER RESISTANT COMPONENTS ADDED SEE SHEETS 7.1 & 7.2		WITH STANDARD DOOR SECTIONS SEE SHEETS 5 & 6	

NOTE:
GLASS CAPACITIES ON THIS SHEET ARE BASED ON ASTM E1300-09 (3 SEC. GUSTS) AND FLORIDA BUILDING COMMISSION DECLARATORY STATEMENT DCA05-DEC-219

GLASS D.L.O. DIMS.

D.L.O. HEIGHT = DOOR FRAME HEIGHT - 14.9375"
D.L.O. WIDTH (X DOORS) = FRAME WIDTH - 12.8125"
D.L.O. WIDTH (XX DOORS) = (FRAME WIDTH - 21.875")/2

Engr: JAVAD AHMAD
CIVIL
FLA. PE # 70592
C.A.N. 3538
JUN 23 2015

PRODUCT REVISED
as complying with the Florida Building Code
Acceptance No 15-0423.04
Expiration Date SEPT. 17, 2017
By *Manuel Jose*
Miami Dade Product Control

af c
AL-FAROOQ CORPORATION
ENGINEERS & PRODUCT DEVELOPMENT
1235 S.W. 87 AVE
MIAMI, FLORIDA 33174
TEL. (305) 264-8100 FAX (305) 262-6978
COMP-ANL\W12-30ENV

SERIES EW-350 OUTSWING ENTRANCE DOOR (L.M.I.)
ENVRALUM INDUSTRIES INC.
5110 N.W. 72 AVENUE BLDG. C
MIAMI, FL. 33166
TEL. (305) 752-4411 FAX. (305) 406-3877

NO	DATE	DESCRIPTION
A	08.23.12	REV. PER RER COMMENTS
B	12.19.14	GENERAL REVISION
C	05.11.15	REV. PER RER COMMENTS

date: 06-08-12
scale: 1/2"=1'-0"
dr. by: HAMID
chk by:

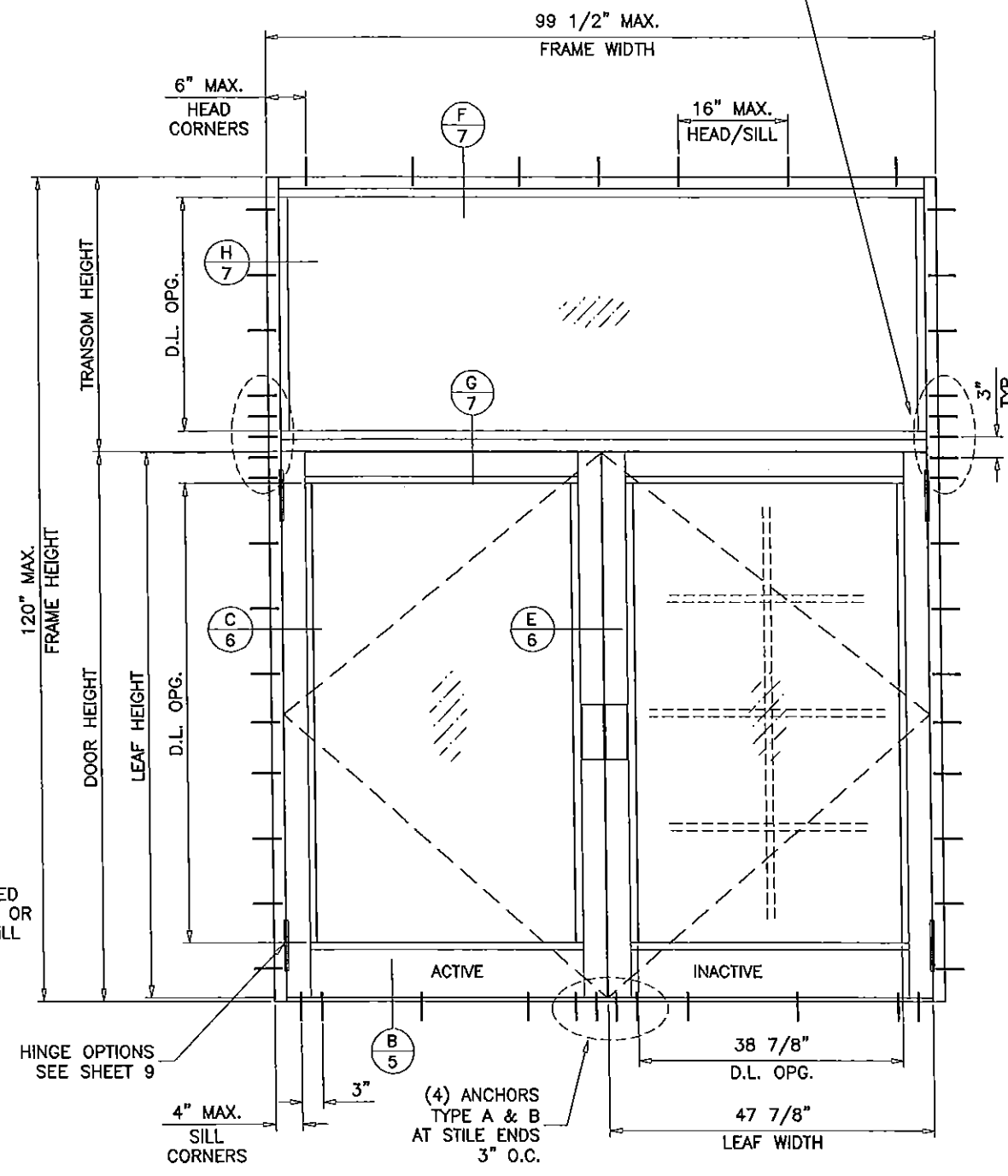
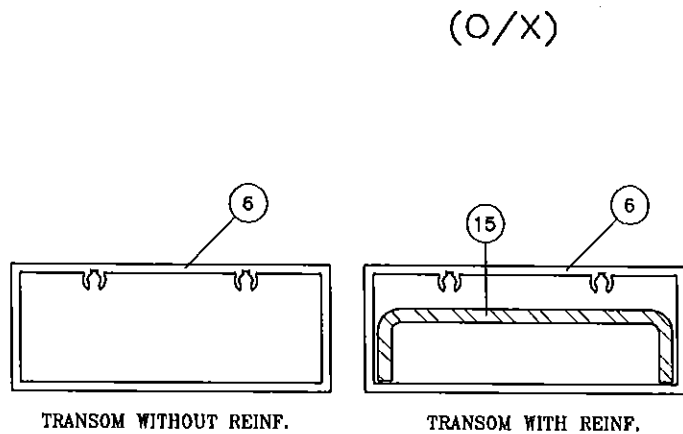
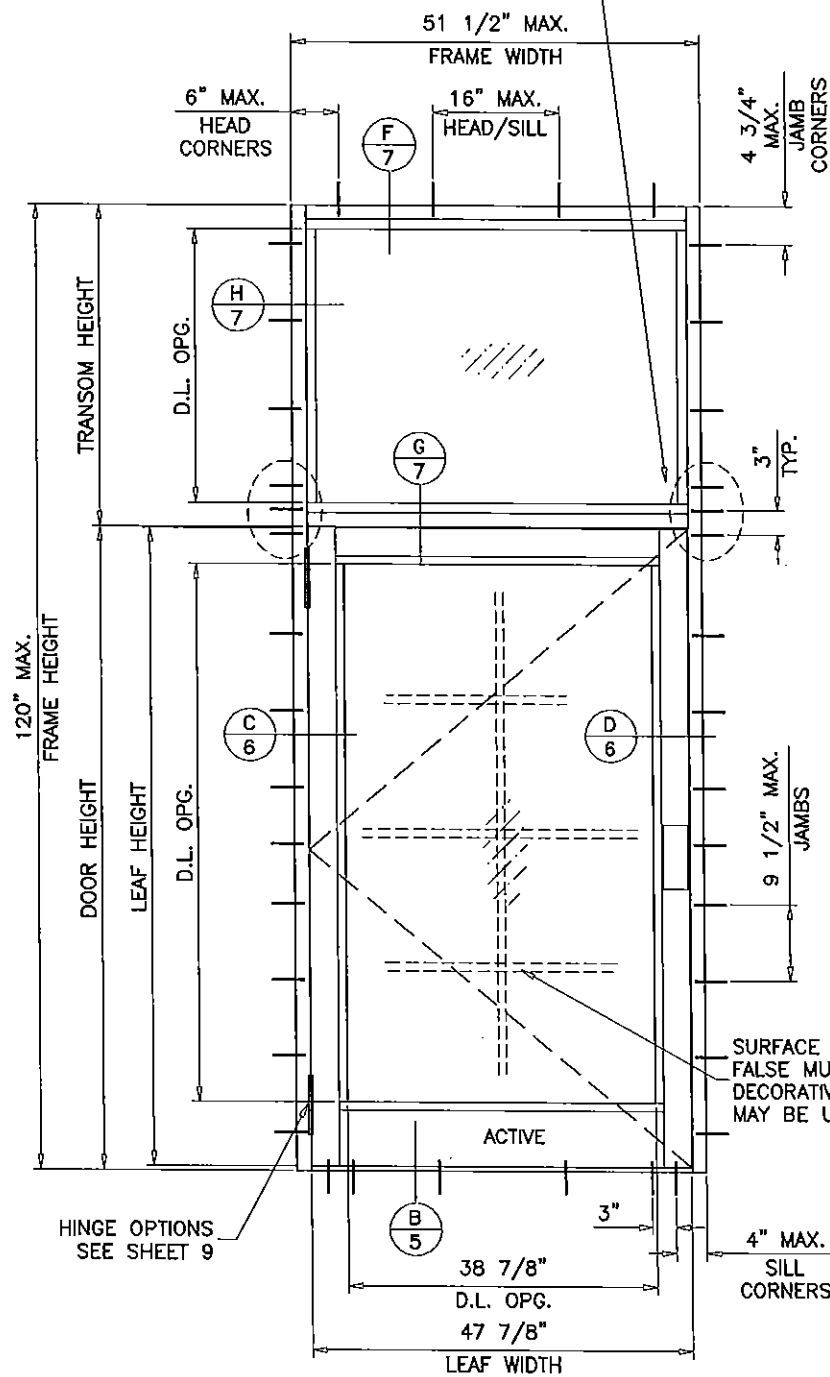
drawing no.
W12-30
sheet 2 of 10

SINGLE OR DOUBLE DOORS WITH TRANSOM
CAPACITY - PSF
NOT APPROVED WHERE WATER INFILTRATION RESISTANCE IS REQUIRED

FRAME/TRANSOM WIDTH	DOOR HEIGHT	TRANSOM HEIGHT	CAPACITY - PSF	
			WITHOUT REINF. EXT.(+) INT.(-)	WITH REINF. EXT.(+) INT.(-)
37-3/4" (X)	75-1/2" (XX)	24"	75.0	75.0
		30"	75.0	75.0
		36"	75.0	75.0
		40"	75.0	75.0
40-3/4" (X)	81-1/2" (XX)	24"	75.0	75.0
		30"	75.0	75.0
		36"	71.8	75.0
		40"	69.0	75.0
43-3/4" (X)	87-1/2" (XX)	24"	75.0	75.0
		30"	65.4	75.0
		36"	61.4	75.0
		40"	58.9	75.0
46-3/4" (X)	93-1/2" (XX)	24"	60.6	75.0
		30"	56.5	75.0
		36"	52.9	75.0
		40"	50.7	75.0
49-3/4" (X)	99-1/2" (XX)	24"	52.9	75.0
		30"	49.3	75.0
		36"	46.0	75.0
		40"	43.8	75.0
37-3/4" (X)	75-1/2" (XX)	24"	75.0	75.0
		30"	75.0	75.0
		36"	75.0	75.0
		40"	75.0	75.0
40-3/4" (X)	81-1/2" (XX)	24"	75.0	75.0
		30"	73.8	75.0
		36"	69.4	75.0
		40"	67.4	75.0
43-3/4" (X)	87-1/2" (XX)	24"	67.4	75.0
		30"	63.2	75.0
		36"	59.3	75.0
		40"	58.3	75.0
46-3/4" (X)	93-1/2" (XX)	24"	58.3	75.0
		30"	54.6	75.0
		36"	51.2	75.0
		40"	50.9	75.0
49-3/4" (X)	99-1/2" (XX)	24"	50.9	75.0
		30"	47.5	75.0
		36"	44.5	73.8
		40"	44.5	73.8
37-3/4" (X)	75-1/2" (XX)	24"	75.0	75.0
		30"	75.0	75.0
		36"	75.0	75.0
		40"	75.0	75.0
40-3/4" (X)	81-1/2" (XX)	24"	74.5	75.0
		30"	70.1	75.0
		36"	70.1	75.0
		40"	70.1	75.0
43-3/4" (X)	87-1/2" (XX)	24"	63.9	75.0
		30"	60.0	75.0
		36"	60.0	75.0
		40"	60.0	75.0
46-3/4" (X)	93-1/2" (XX)	24"	55.3	75.0
		30"	51.8	75.0
		36"	51.8	75.0
		40"	51.8	75.0
49-3/4" (X)	99-1/2" (XX)	24"	48.2	75.0
		30"	45.2	73.8
		36"	45.2	73.8
		40"	45.2	73.8
37-3/4" (X)	75-1/2" (XX)	24"	75.0	75.0
		30"	75.0	75.0
		36"	75.0	75.0
		40"	75.0	75.0
40-3/4" (X)	81-1/2" (XX)	24"	70.8	75.0
		30"	70.8	75.0
		36"	70.8	75.0
		40"	70.8	75.0
43-3/4" (X)	87-1/2" (XX)	24"	60.7	75.0
		30"	60.7	75.0
		36"	60.7	75.0
		40"	60.7	75.0
46-3/4" (X)	93-1/2" (XX)	24"	52.5	75.0
		30"	52.5	75.0
		36"	52.5	75.0
		40"	52.5	75.0
49-3/4" (X)	99-1/2" (XX)	24"	45.8	73.8
		30"	45.8	73.8
		36"	45.8	73.8
		40"	45.8	73.8

ANCHOR TYPE	WITHOUT REINF.	WITH REINF.
A	2	3
B & C	2	2

ANCHOR TYPE	WITHOUT REINF.	WITH REINF.
A	5	6
B & C	4	4



NOTE:
GLASS CAPACITIES ON THIS SHEET ARE
BASED ON ASTM E1300-09 (3 SEC. GUSTS)
AND FLORIDA BUILDING COMMISSION
DECLARATORY STATEMENT DCA05-DEC-219

Engr: JAVAD AHMAD
CIVIL
FLA. PE # 70592
C.A.N. 3538
JUN 23 2015

PRODUCT REVISED
as complying with the Florida
Building Code
Acceptance No 15-0423.04
Expiration Date Sept 17, 2017
By *Manuel Jera*
Miami Dade Product Control

afC
AL-FAROOQ CORPORATION
ENGINEERS & PRODUCT DEVELOPMENT
1235 S.W. 87 AVE
MIAMI, FLORIDA 33174
TEL. (305) 264-8100 FAX. (305) 262-6978
COMP-ANL\W12-30ENV

SERIES ENV-350 OUTSWING ENTRANCE DOOR (L.M.I.)
ENVIRALUM INDUSTRIES INC.
5110 N.W. 72 AVENUE BLDG. C
MIAMI, FL. 33166
TEL. (305) 752-4411 FAX. (305) 406-3877

NO	DATE	DESCRIPTION	BY	PER	REVISION
A	08.23.12	REV. PER RER COMMENTS			
B	12.19.14	GENERAL REVISION			
C	05.11.15	REV. PER RER COMMENTS			

date: 06-08-12
scale: 1/2"=1'-0"
dr. by: HAMID
chk. by:

drawing no.
W12-30
sheet 3 of 10

LOCK OPTIONS:

STD. 3 POINT LOCK

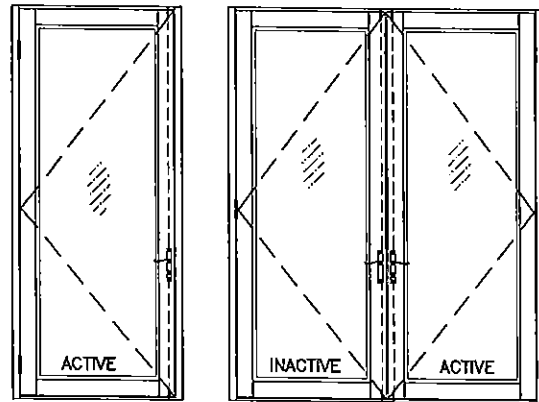
MAX. FRAME HEIGHT = 120 IN.
 MAX. LEAF WIDTH = 48 IN.
 MAX. DESIGN LOAD = 100 PSF

ACTIVE LEAF:

3 POINT LOCK SYSTEM BY 'INTERLOCK' AT 39" FROM BOTTOM
 HANDLE ACTIVATES DEAD BOLT AND SHOOT BOLTS ENGAGING AT HEAD AND SILL
 KEY OPERATED ON EXTERIOR AND THUMB TURN ON INTERIOR
 FASTENED TO ACTIVE LEAF LOCK STILE WITH
 (2) #8-32 X 2" OH MS

INACTIVE LEAF:

2 POINT LOCK SYSTEM BY 'INTERLOCK' AT 39" FROM BOTTOM
 HANDLE ACTIVATES SHOOT BOLTS ENGAGING AT HEAD AND SILL
 FASTENED TO INACTIVE LEAF LOCK STILE WITH
 (2) #8-32 X 2" OH MS



STD. 3 POINT LOCK

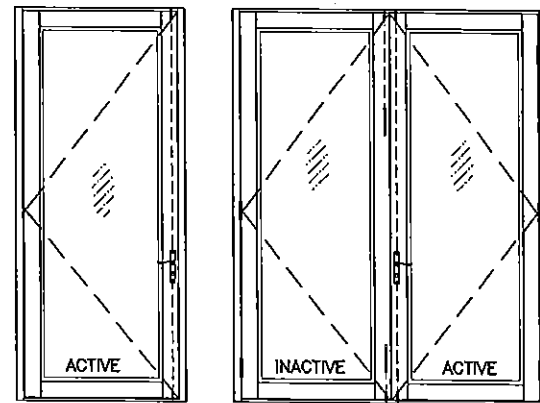
MAX. FRAME HEIGHT = 120 IN.
 MAX. LEAF WIDTH = 48 IN.
 MAX. DESIGN LOAD = 100 PSF

ACTIVE LEAF:

THREE POINT LOCK SYSTEM SERIES 2222 BY 'REGENT HARDWARE'
 KEY OPERATED FROM EXTERIOR AND THUMB TURN ON INTERIOR WITH CONCEALED FLUSH BOLTS AT TOP & BOTTOM OF LOCK STILE
 LOCATED AT 34" FROM BOTTOM OF LEAF

INACTIVE LEAF:

MANUALLY OPERATED TWO POINT LOCK SYSTEM BY 'REGENT HARDWARE' WITH CONCEALED FLUSH BOLTS AT TOP & BOTTOM OF LOCK STILE
 FASTENED WITH
 (2) #8-32 X 1/4" PH MACHINE SCREWS



STD. 3 POINT LOCK

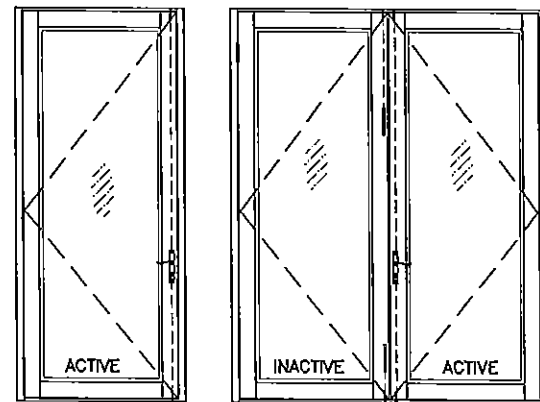
MAX. FRAME HEIGHT = 120 IN.
 MAX. LEAF WIDTH = 48 IN.
 MAX. DESIGN LOAD = 100 PSF

ACTIVE LEAF:

KEY OPERATED THREE POINT LOCK SYSTEM BY 'ADAMS RITE' WITH CONCEALED FLUSH BOLTS AT TOP & BOTTOM OF LOCK STILE AND A THUMB TURN ON THE INTERIOR, LOCATED AT 40" FROM BOTTOM OF PANEL FASTENED WITH
 (2) #12-24 X 1/2" FH MACHINE SCREWS

INACTIVE LEAF:

MANUALLY OPERATED TWO POINT LOCK SYSTEM BY 'ADAMS RITE' WITH CONCEALED FLUSH BOLTS AT TOP & BOTTOM OF LOCK STILE
 FASTENED WITH
 (2) #8-32 X 1/4" PH MACHINE SCREWS



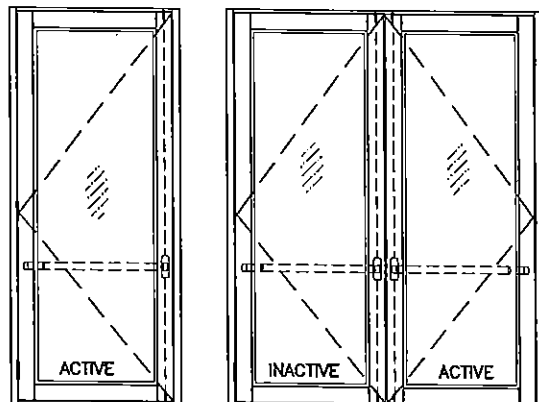
FRAME HEIGHTS DOES INCLUDE OPTIONAL TRANSOM

PANIC EXIT DEVICE

MAX. FRAME HEIGHT = 98 IN.
 MAX. LEAF WIDTH = 48 IN.
 MAX. DESIGN LOAD = 75 PSF

ACTIVE & INACTIVE LEAF:

CONCEALED VERTICAL ROD PANIC EXIT DEVICE # 5770 BY 'REGENT HARDWARE' LOCATED AT 40" FROM SILL AT EACH LEAF.
 FASTENED WITH
 (1) #10 X 3/8" FH SELF DRILLING SCREW AT ONE END AND
 (2) #10 X 1/2" FH SELF DRILLING SCREWS AT OTHER END

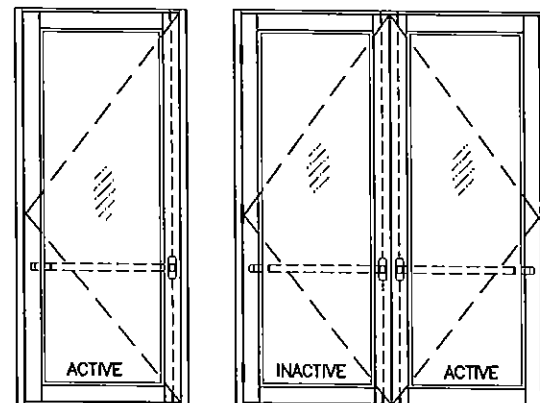


PANIC EXIT DEVICE

MAX. FRAME HEIGHT = 120 IN.
 MAX. LEAF WIDTH = 48 IN.
 MAX. DESIGN LOAD = 100 PSF

ACTIVE & INACTIVE LEAF:

CONCEALED VERTICAL ROD PANIC EXIT DEVICE # G86 BY 'ADAMS RITE' LOCATED AT 40" FROM SILL AT EACH LEAF.
 FASTENED WITH
 (2) #10-32 X 3/4" FH MACHINE SCREWS AT ONE END AND
 (2) #10-24 X 1/2" FH MACHINE SCREWS AT OTHER END

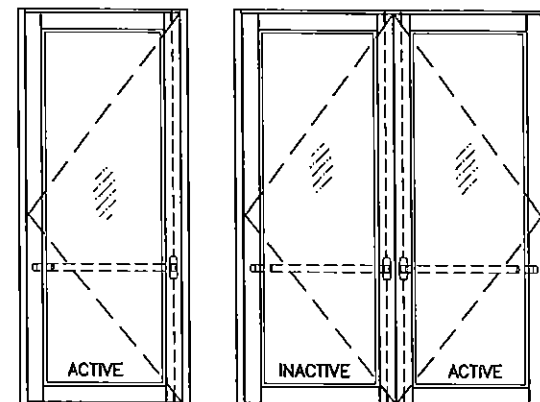


PANIC EXIT DEVICE

MAX. FRAME HEIGHT = 120 IN.
 MAX. LEAF WIDTH = 48 IN.
 MAX. DESIGN LOAD = 100 PSF

ACTIVE & INACTIVE LEAF:

CONCEALED VERTICAL ROD PANIC EXIT DEVICE PRECISION 2800 BY 'STANLEY' LOCATED AT 40" FROM SILL AT EACH LEAF.
 FASTENED WITH
 (2) #10-32 X 3/4" FH MACHINE SCREWS AT ONE END AND
 (2) #10-24 X 1/2" FH MACHINE SCREWS AT OTHER END



Engr: JAVAD AHMAD
 CIVIL
 FLA. PE # 70592
 C.A.N. 3538

JAVAD AHMAD
 JUN 23 2015

PRODUCT REVISED
 as complying with the Florida
 Building Code
 Acceptance No. 15-0423.04
 Expiration Date SEPT. 17, 2017
 By *Manuel Perez*
 Miami Dade Product Control

SERIES ENV-350 OUTSWING ENTRANCE DOOR (L.M.I.)

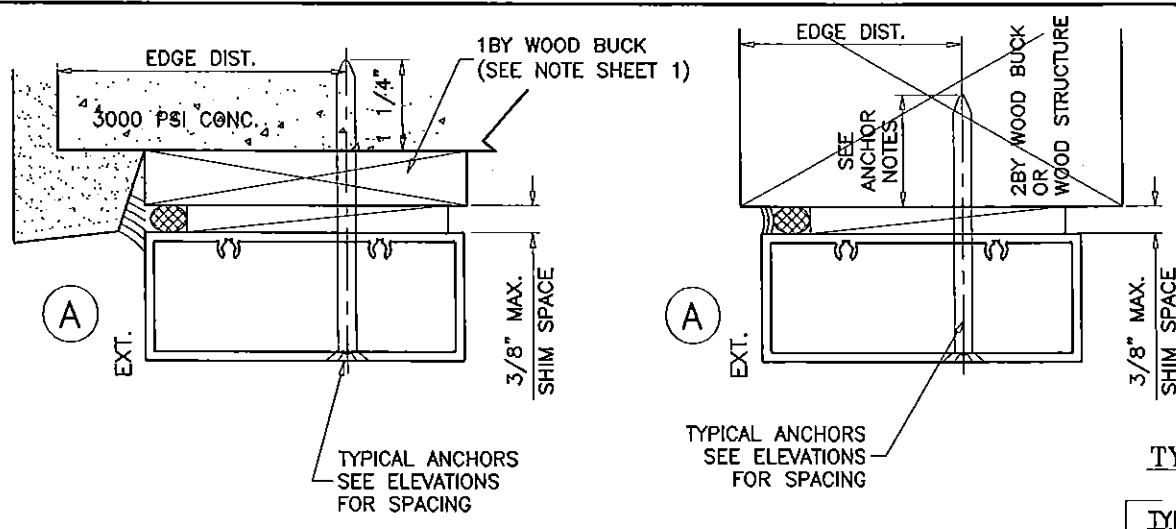
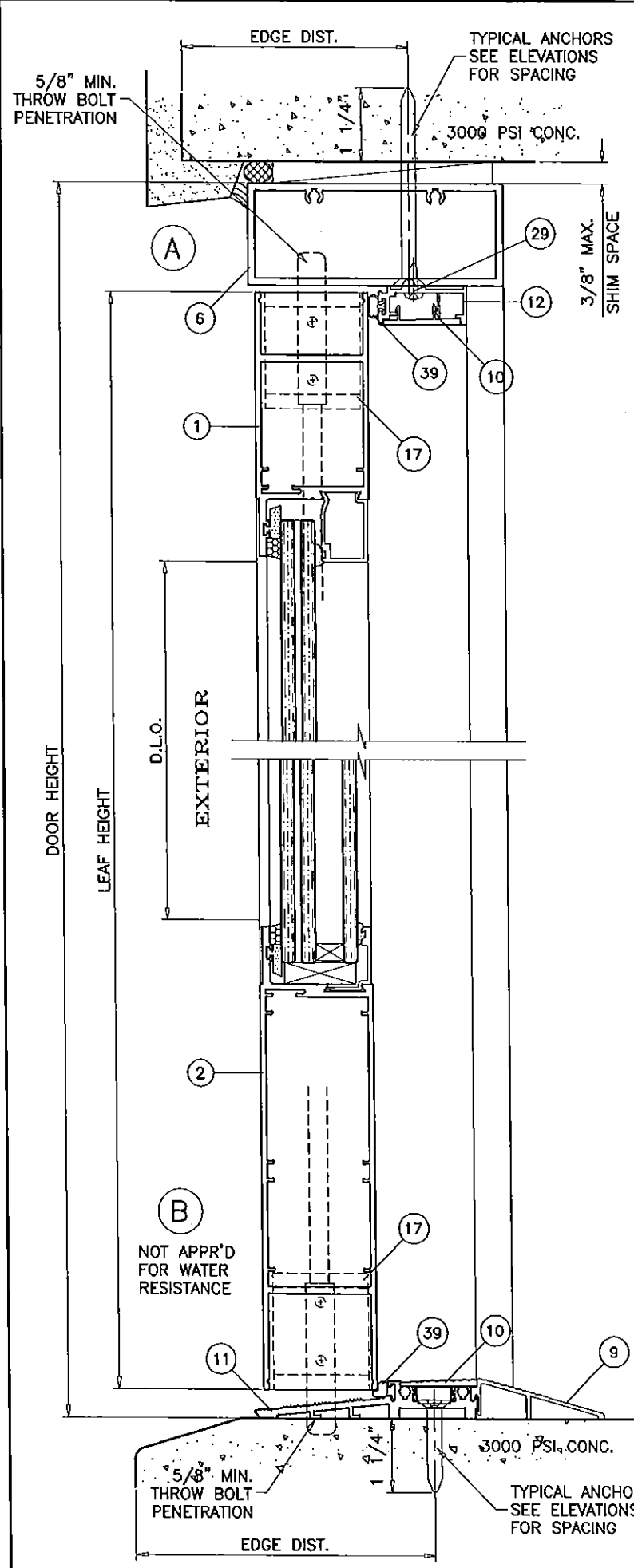
ENVIRALUM INDUSTRIES INC.
 5110 N.W. 72 AVENUE BLDG. C
 MIAMI, FL. 33166
 TEL. (305) 752-4411 FAX. (305) 406-3877

revisions:	no	date	description
	A	08.23.12	NO CHANGE THIS SHEET
	B	12.19.14	GENERAL REVISION
	C	05.11.15	REV. PER PER COMMENTS

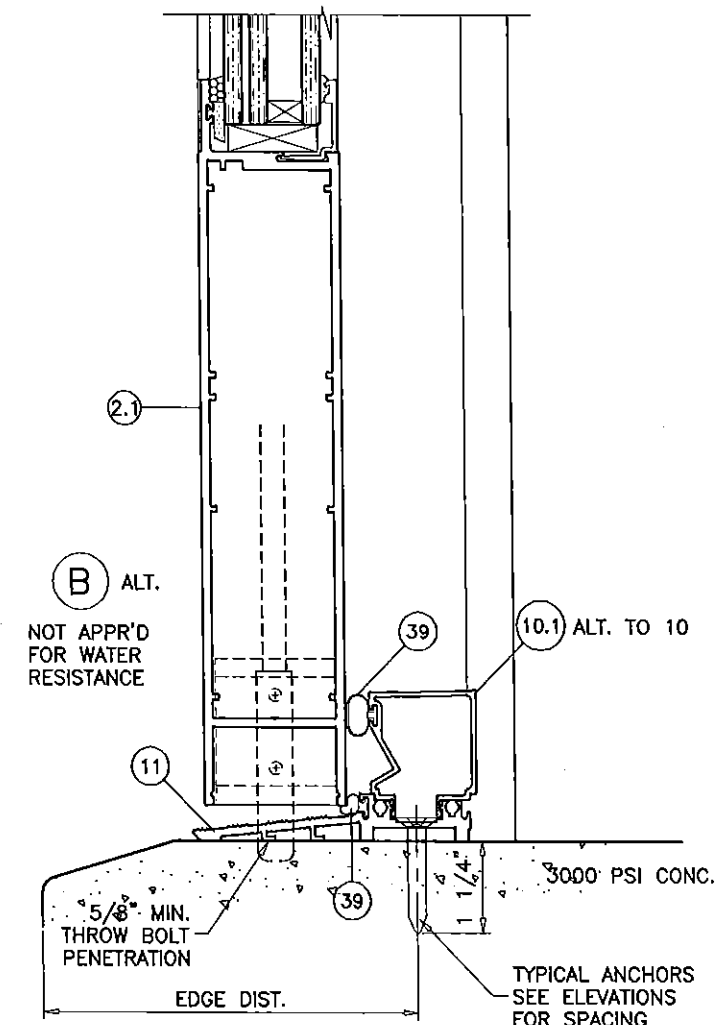
date: 06-08-12
 scale: 3/8" = 1"
 dr. by: HAMID
 chk. by:

drawing no.
W12-30
 sheet 4 of 10

a f c
AL-FAROOQ CORPORATION
 ENGINEERS & PRODUCT DEVELOPMENT
 1235 S.W. 87 AVE
 MIAMI, FLORIDA 33174
 TEL. (305) 264-8100 FAX. (305) 262-6978
 COMP-ANL\W12-30ENV



WOOD BUCKS AND METAL STRUCTURE NOT BY ENVIRALUM MUST SUSTAIN LOADS IMPOSED BY GLAZING SYSTEM AND TRANSFER THEM TO THE BUILDING STRUCTURE.



TYPICAL ANCHORS: SEE ELEV. FOR SPACING

TYPE 'A'

1/4" DIA ULTRACON BY 'ELCO' (Fu=177 KSI, Fy=155 KSI) INTO 2BY WOOD BUCKS OR WOOD STRUCTURES WITH 1-1/2" MIN. PENETRATION INTO WOOD THRU 1BY WOOD BUCKS INTO CONCRETE WITH 1-1/4" MIN. EMBED INTO CONCRETE DIRECTLY INTO CONCRETE OR MASONRY WITH 1-1/4" MIN. EMBED INTO CONC. OR MASONRY

ANCHOR EDGE DISTANCES

INTO CONCRETE AND MASONRY = 2-1/2" MIN.
INTO WOOD STRUCTURE = 1" MIN.

TYPE 'B'

5/16" DIA ULTRACON BY 'ELCO' (Fu=177 KSI, Fy=155 KSI) INTO WOOD STRUCTURES WITH 1-7/8" MIN. PENETRATION INTO WOOD THRU 1BY OR 2BY WOOD BUCKS INTO CONCRETE WITH 1-1/4" MIN. EMBED INTO CONCRETE DIRECTLY INTO CONCRETE OR MASONRY WITH 1-1/4" MIN. EMBED INTO CONC. OR MASONRY

ANCHOR EDGE DISTANCES

INTO CONCRETE AND MASONRY = 3" MIN.
INTO WOOD STRUCTURE = 1-1/4" MIN.

TYPE 'C'

1/4" DIA. SELF DRILLING SCREWS ST/ST (GRADE 5 CRS) INTO METAL STRUCTURES STEEL : 12 GA. MIN. (Fy = 36 KSI MIN.) ALUMINUM : 1/8" THK. MIN. (6063-T5 MIN.) (STEEL IN CONTACT WITH ALUMINUM TO BE PLATED OR PAINTED)

ANCHOR EDGE DISTANCES

INTO METAL STRUCTURE = 1/2" MIN.

WOOD AT HEAD OR JAMBS SG = 0.55 MIN.
CONCRETE AT HEAD, SILL OR JAMBS f'c = 3000 PSI MIN.
C-90 HOLLOW/FILLED BLOCK AT JAMBS f'm = 2000 PSI MIN.

Engr: JAVAD AHMAD
CML
FLA. PE # 70592
C.A.N. # 5538

JUN 23 2015

PRODUCT REVISED as complying with the Florida Building Code Acceptance No 15-0423.04 Expiration Date SEP 17 2017
By *Manuel J...*
Quality Control

THRESHOLD NOT ADA COMPLIANT
SEE SHEET 7.3 FOR ADA COMPLIANCE

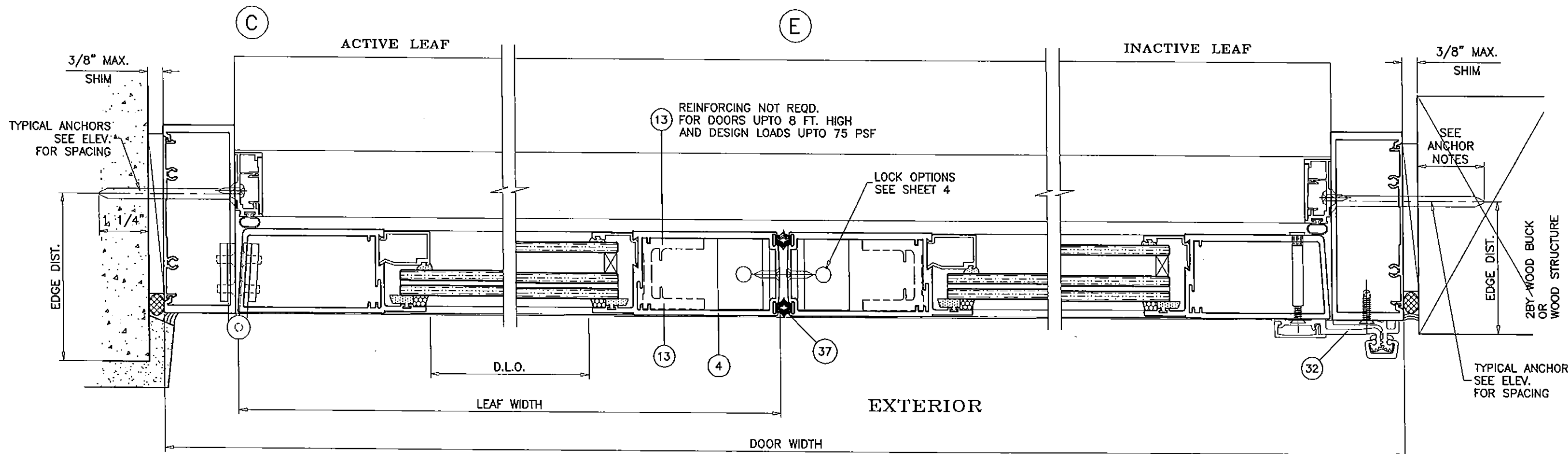
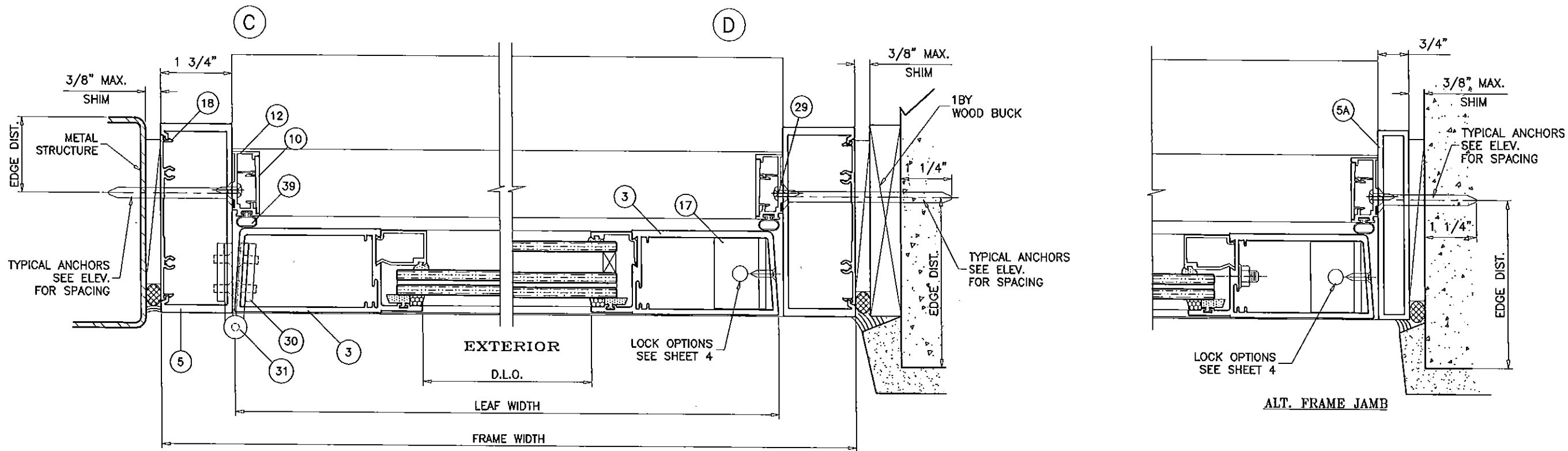
af c
AL-FAROOQ CORPORATION
ENGINEERS & PRODUCT DEVELOPMENT
1235 S.W. 87 AVE
MIAMI, FLORIDA 33174
TEL (305) 264-8100 FAX (305) 262-6978
COMP-ANL W12-30ENY

SERIES EW-350 OUTSWING ENTRANCE DOOR (L.M.I.)
ENVRALUM INDUSTRIES INC.
5110 N.W. 72 AVENUE BLDG. C
MIAMI, FL. 33166
TEL (305) 752-4411 FAX (305) 406-3877

no	date	description	by
A	08.23.12	REV. PER COMMENTS	
B	12.19.14	GENERAL REVISION	
C	05.11.15	REV. PER COMMENTS	

date:	06-08-12
scale:	3/8" = 1"
dr. by:	HAMID
chk. by:	

drawing no.	W12-30
sheet	5 of 10



af c
AL-FAROOQ CORPORATION
 ENGINEERS & PRODUCT DEVELOPMENT
 1235 S.W. 87 AVE
 MIAMI, FLORIDA 33174
 TEL (305) 264-8100 FAX (305) 262-6978
 COMP-ANL/W12-30ENV

SERIES ENW-350 OUTSWING ENTRANCE DOOR (L.M.I.)
ENVRALUM INDUSTRIES INC.
 5110 N.W. 72 AVENUE BLDG. C
 MIAMI, FL. 33166
 TEL (305) 752-4411 FAX (305) 406-3877

no	date	by	description
A	08.23.12		REV. PER PER COMMENTS
B	12.19.14		NO CHANGE THIS SHEET
C	05.11.15		REV. PER PER COMMENTS

date: 06-08-12
 scale: 3/8" = 1"
 dr. by: HAMID
 chk. by:

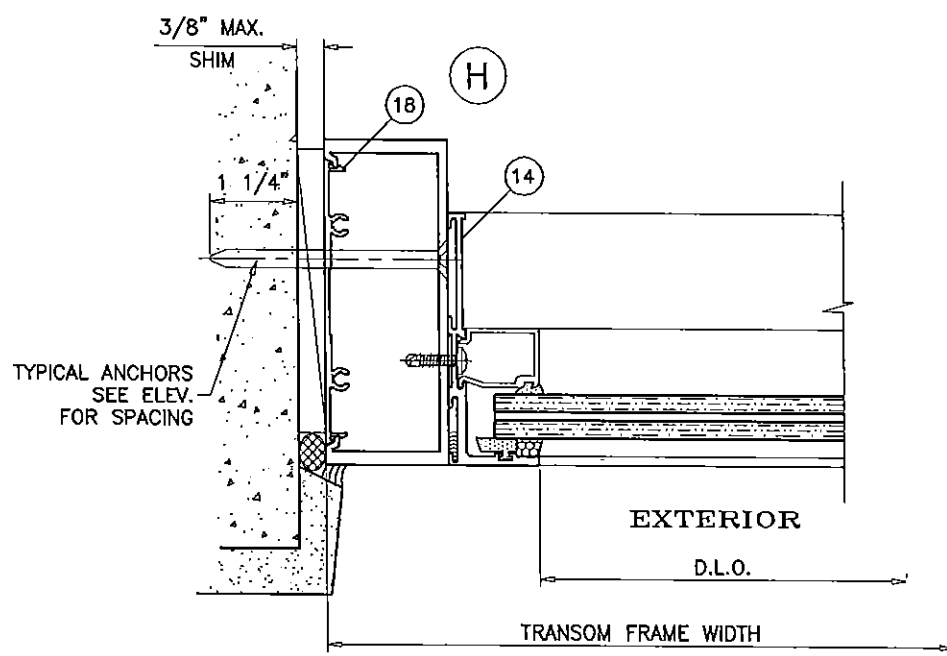
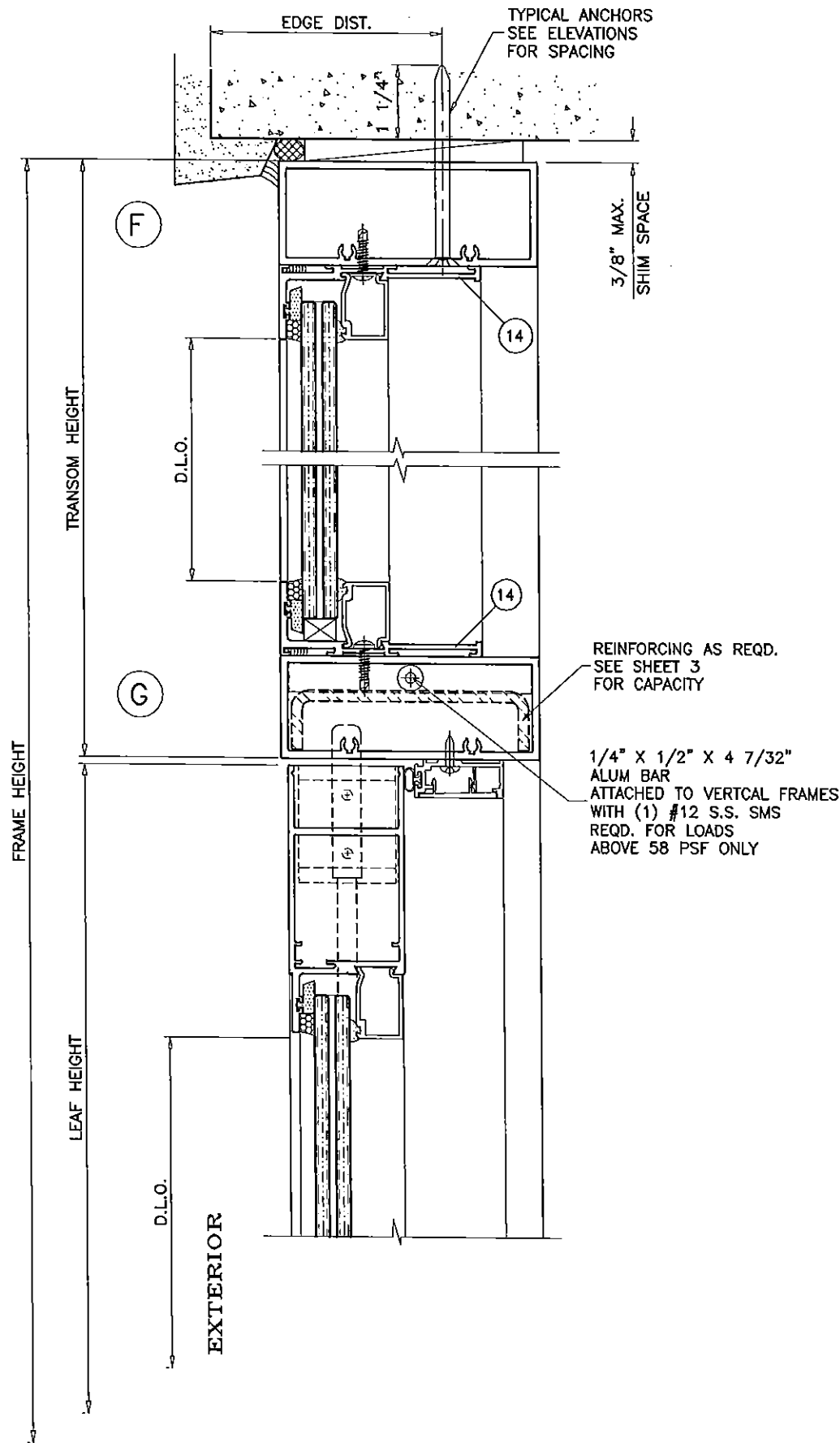
drawing no.
W12-30
 sheet 6 of 10

Engr: JAVAD AHMAD
 CIVIL
 FLA. PE # 70592
 C.A.N. 3538

 JUN 23 2015

PRODUCT REVISED
 as complying with the Florida
 Building Code
 Acceptance No **15-0423.04**
 Expiration Date **SEP 17 2017**
 By
 Miami Dade Product Control

DOOR DETAILS



TRANSOM DETAILS

Engr: JAVAD AHMAD
 CIVIL
 FLA. PE # 70592
 C.A.N. 0538

JUN 23 2015

PRODUCT REVISED
 as complying with the Florida
 Building Code
 Acceptance No. 15-0423.04
 Expiration Date Sept. 17, 2017

By *Manuel Perez*
 Miami Dade Product Control

afc

AL-FAROOQ CORPORATION
 ENGINEERS & PRODUCT DEVELOPMENT
 1235 S.W. 87 AVE
 MIAMI, FLORIDA 33174
 TEL. (305) 264-8100 FAX. (305) 262-6978
 COMP-ANL/W12-30ENV

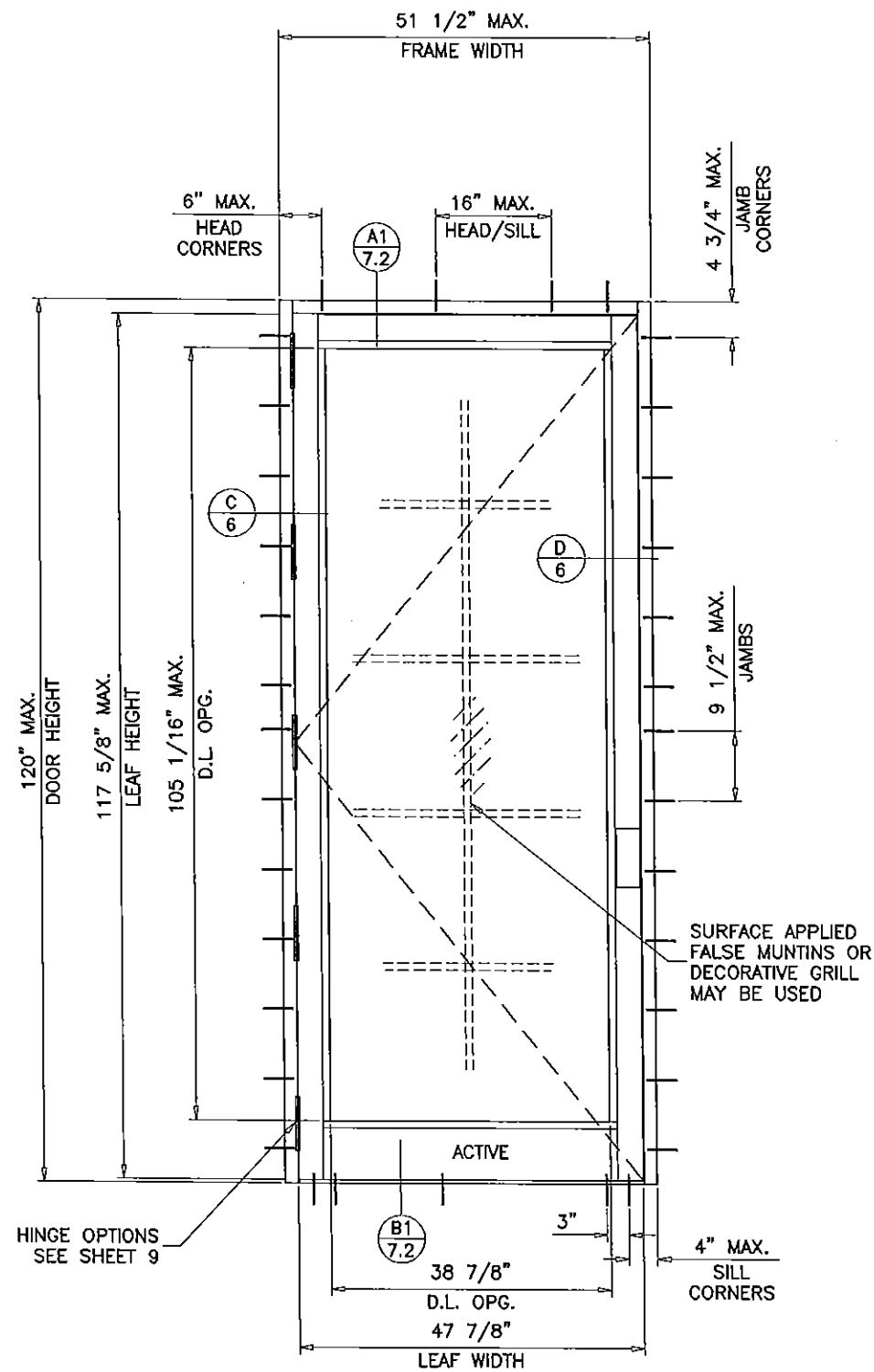
SERIES EW-350 OUTSWING ENTRANCE DOOR (L.M.I.)

ENVIRALUM INDUSTRIES INC.
 5110 N.W. 72 AVENUE BLDG. C
 MIAMI, FL. 33166
 TEL. (305) 752-4411 FAX. (305) 406-3877

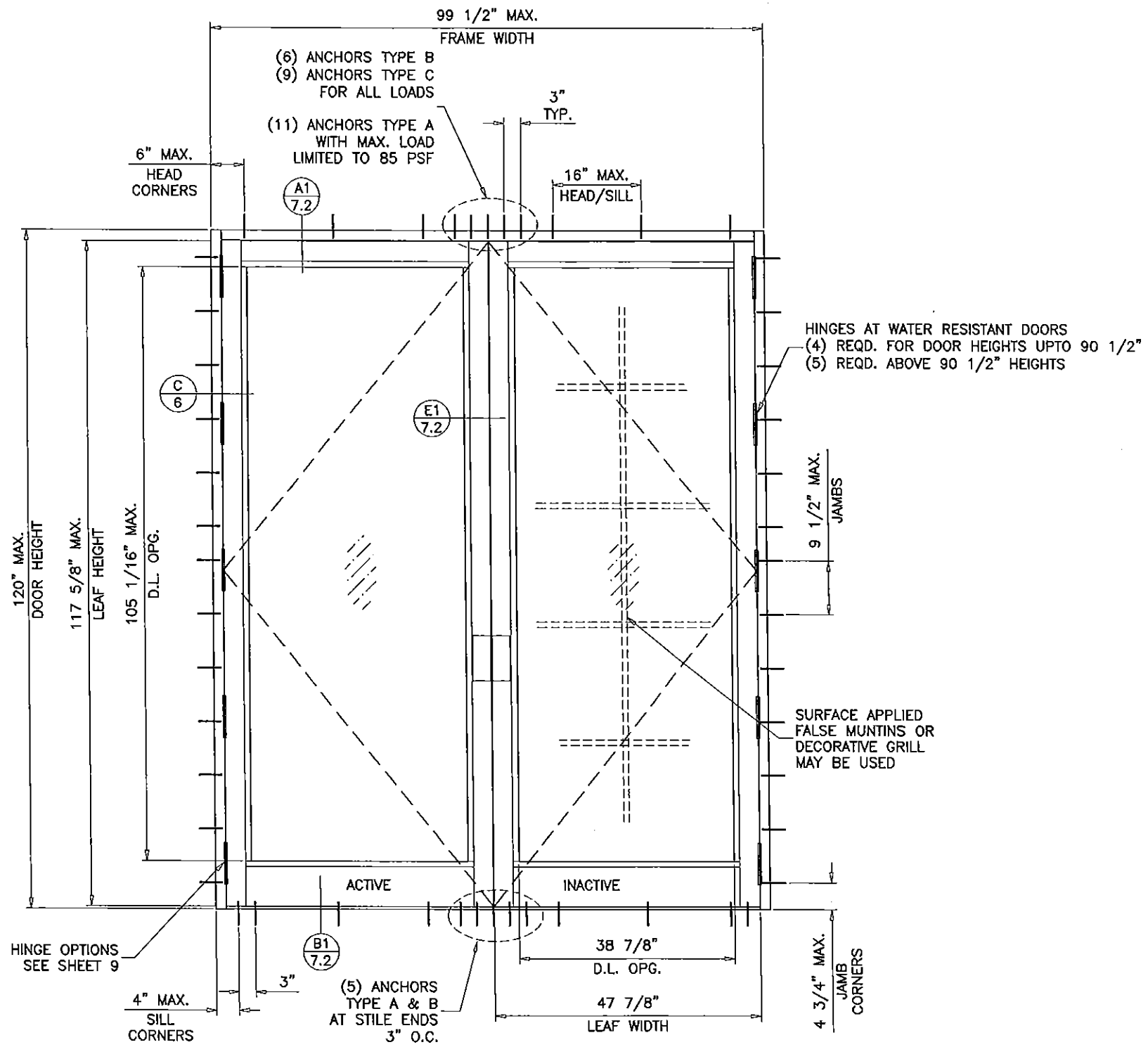
no	date	by	description
A	08.23.12		NO CHANGE THIS SHEET
B	12.19.14		GENERAL REVISION
C	05.11.15		REV. PER PER COMMENTS

date: 06-08-12
 scale: 3/8" = 1"
 dr. by: HAMID
 chk. by:

drawing no.
W12-30
 sheet 7 of 10



(X)



(XX)

TYPICAL ELEVATIONS
DOORS TO MEET WATER REQUIREMENTS

Engr: JAVAD AHMAD
CML
FLA. PE # 70592
C.A.N. 3538

JUN 23 2015

PRODUCT REVISED
as complying with the Florida
Building Code
Acceptance No 15-0423.04
Expiration Date Sept. 17, 2017

By *Manuel Jerez*
Miami Dade Product Control

af c

AL-FAROOQ CORPORATION
ENGINEERS & PRODUCT DEVELOPMENT
1235 S.W. 87 AVE
MIAMI, FLORIDA 33174
TEL. (305) 264-8100 FAX. (305) 262-6978
COMP-ANL\W12-30ENV

SERIES ENV-350 OUTSWING ENTRANCE DOOR (L.M.I.)

ENVRALUM INDUSTRIES INC.
5110 N.W. 72 AVENUE BLDG. C
MIAMI, FL. 33166
TEL. (305) 752-4411 FAX. (305) 406-3877

no	date	description
B	12.19.14	GENERAL REVISION
C	05.11.15	REV. PER COMMENTS

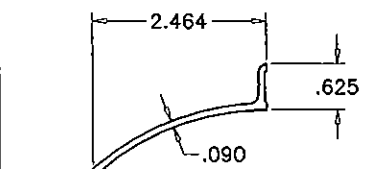
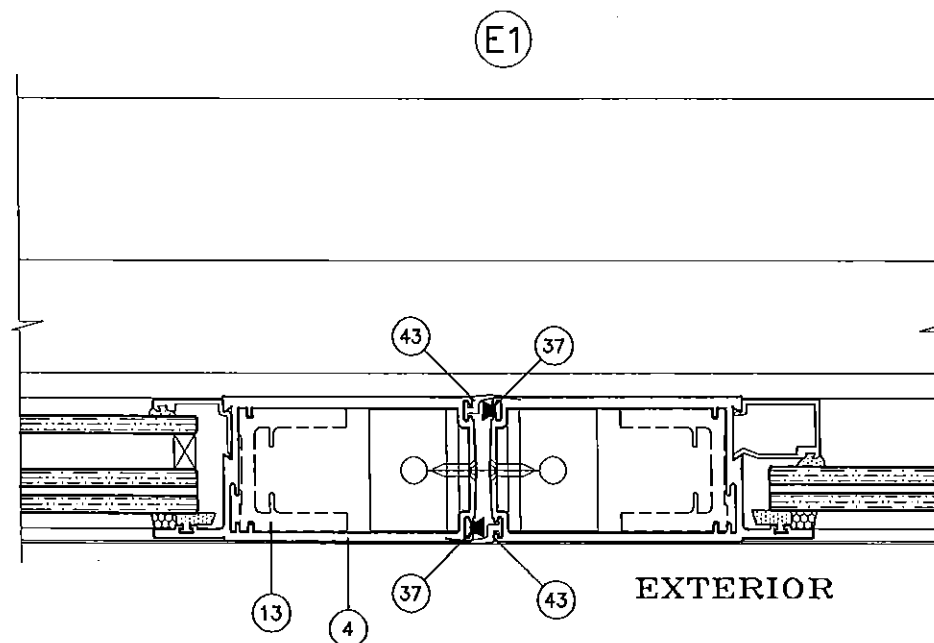
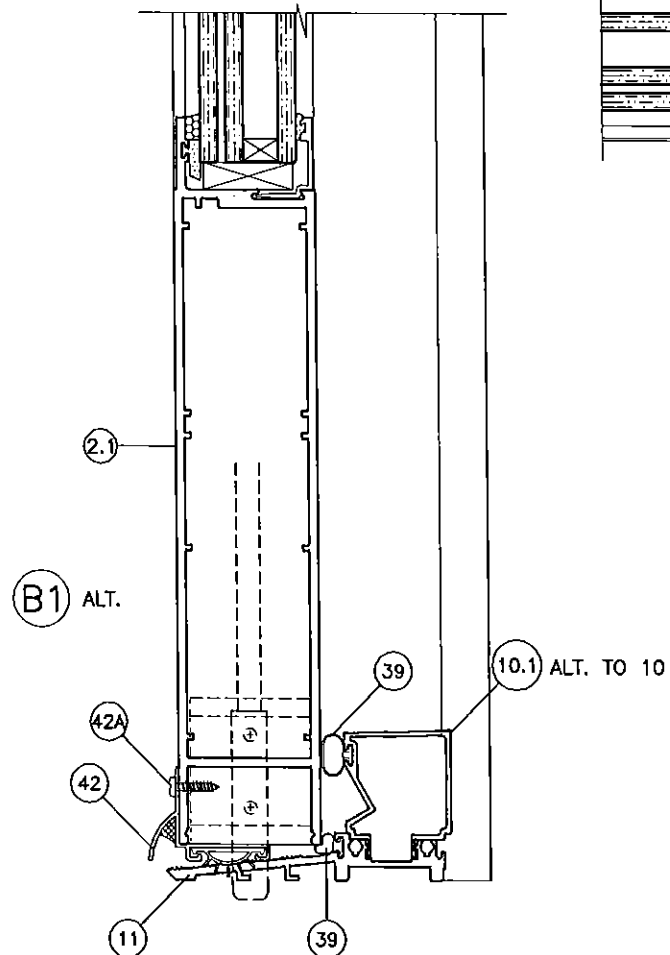
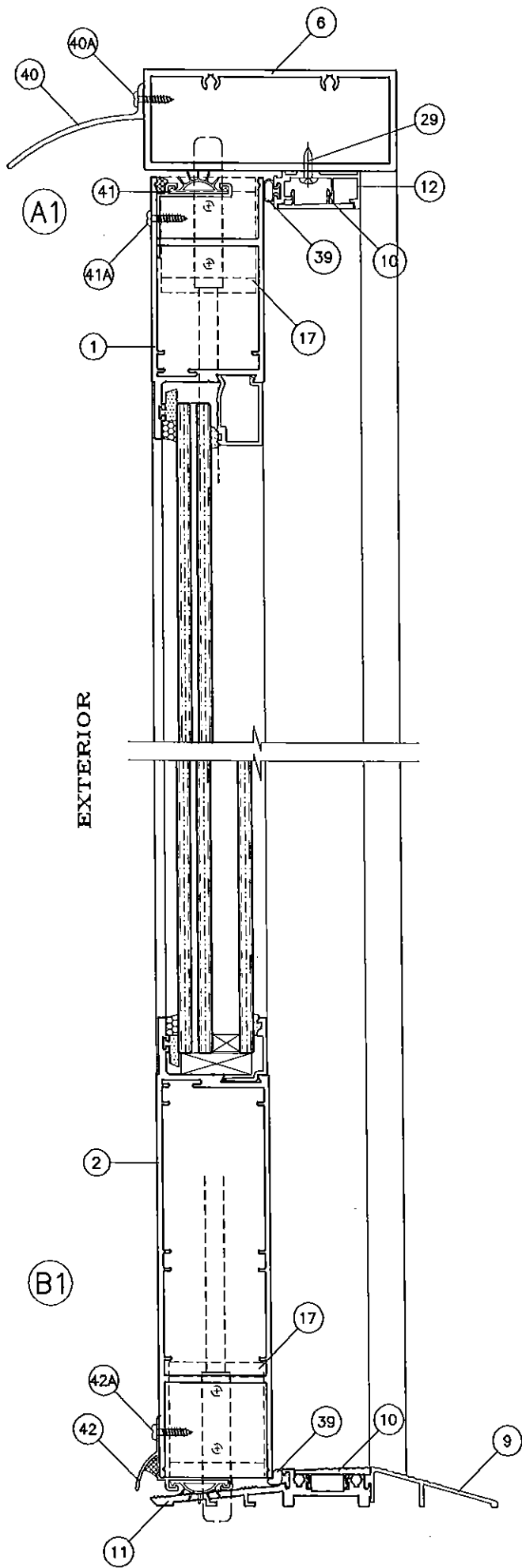
date: 06-08-12
scale: 3/8" = 1"
dr. by: HAMID
chk. by:

drawing no.
W12-30
sheet 7.1 of 10

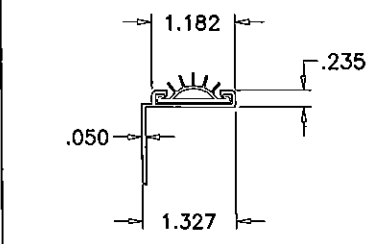
DETAILS

DOORS TO MEET WATER REQUIREMENTS

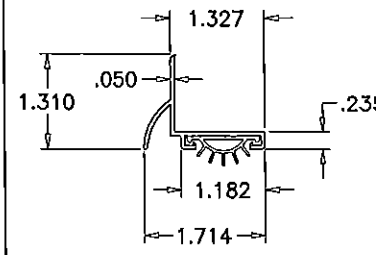
ITEM NUMBERS 40, 41, 42 AND 43 ADDED TO STANDARD DOOR SECTIONS TO MEET WATER INFILTRATION RESISTANCE REQUIREMENT. SEE SHEETS 5 AND 6 FOR STD. DOOR DETAILS.



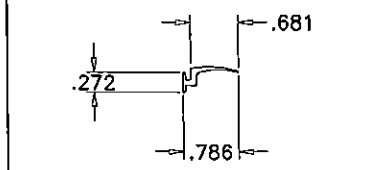
40 DRIP CAP



41 DOOR SWEEP (TOP)



42 DOOR SWEEP (BOTTOM)



43 WATER FLAP

WATER RESISTANT DOOR COMPONENTS

af c
AL-FAROOQ CORPORATION
 ENGINEERS & PRODUCT DEVELOPMENT
 1235 S.W. 87 AVE
 MIAMI, FLORIDA 33174
 TEL. (305) 264-8100 FAX. (305) 262-6978
 COMP-ANI\W12-30ENV

SERIES ENV-350 OUTSWING ENTRANCE DOOR (L.M.I.)
ENVIRALUM INDUSTRIES INC.
 5110 N.W. 72 AVENUE BLDG. C
 MIAMI, FL. 33166
 TEL. (305) 752-4411 FAX. (305) 406-3877

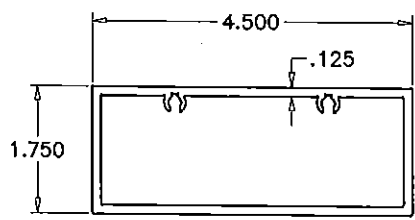
Revisions:	
no	date by description
C	05.11.15 REV. PER PER COMMENTS

Engr: JAVAD AHMAD
 CML
 FLA. PE # 70592
 C.A.N. 3538
 JAN 23 2015

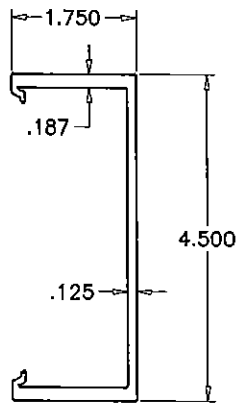
PRODUCT REVISED
 as complying with the Florida
 Building Code
 Acceptance No 15-0423 04
 Expiration Date Sept. 17, 2017
 By *Manuel Perez*
 Miami Dade Product Control

date: 06-08-12
 scale: 3/8" = 1"
 dr. by: HAMID
 chk. by:

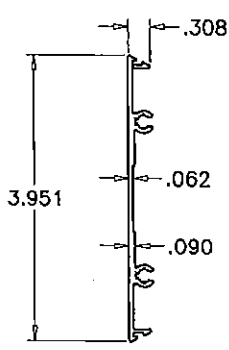
drawing no.
W12-30
 sheet 7.2 of 10



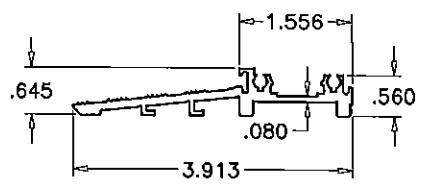
6 FRAME HEAD



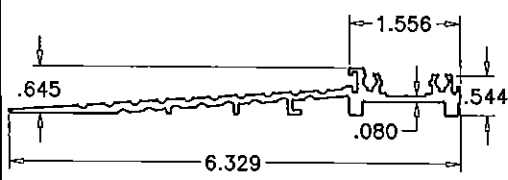
5 FRAME JAMB



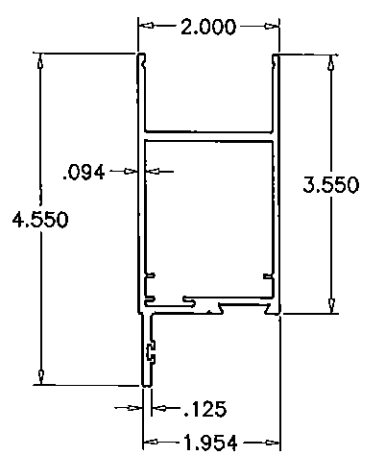
16 FLAT FILLER



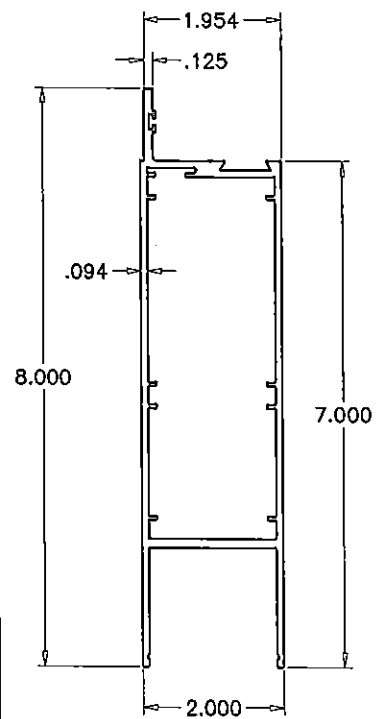
11 THRESHOLD



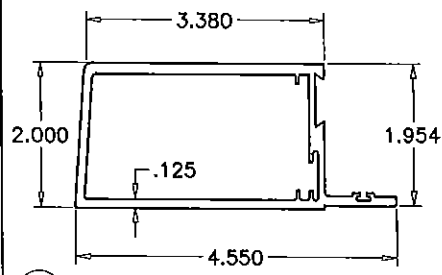
11.1 ALT. THRESHOLD



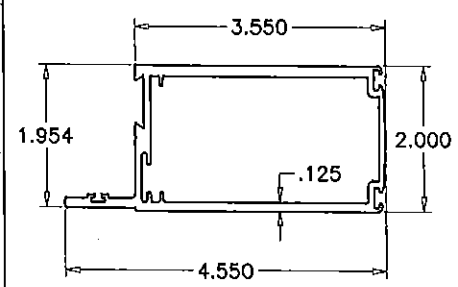
1 TOP RAIL



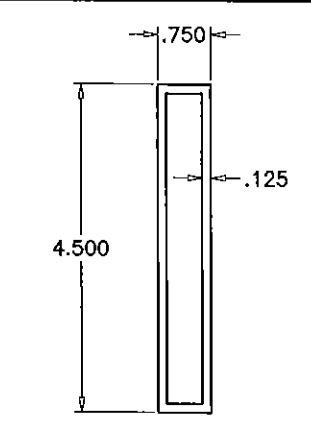
2 BOTTOM RAIL



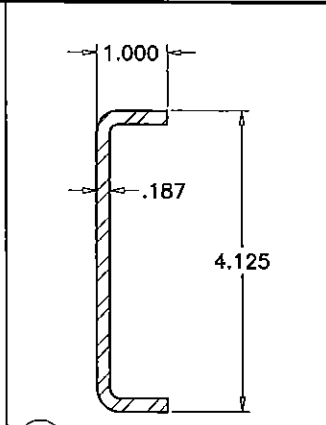
3 HINGE STILE



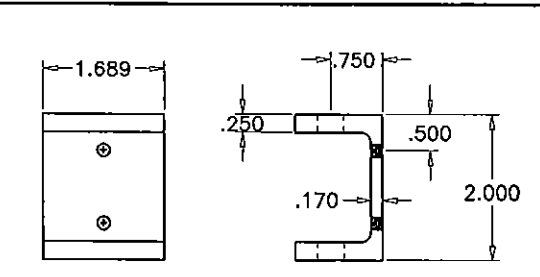
4 LOCK STILE



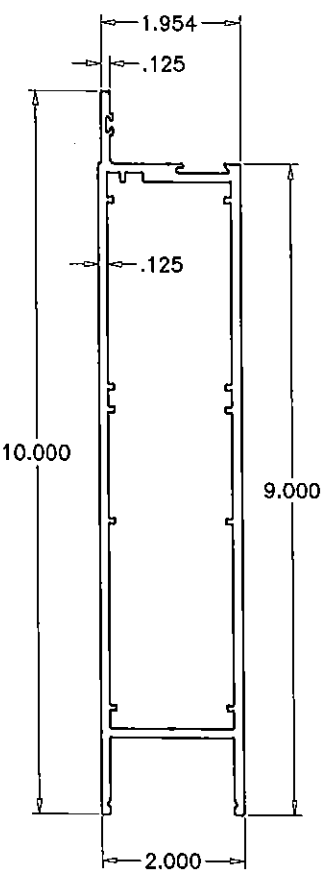
5A ALT. FRAME JAMB



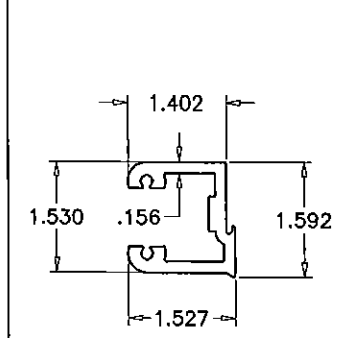
15 STEEL CHANNEL REINF.



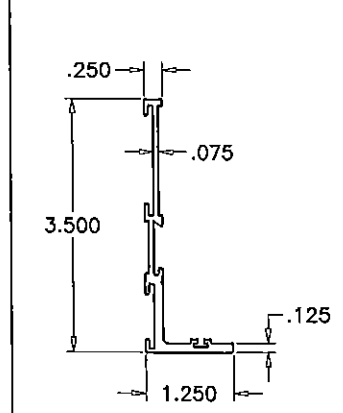
17 GUIDE CHANNEL FOR TOP & BOTTOM PIN



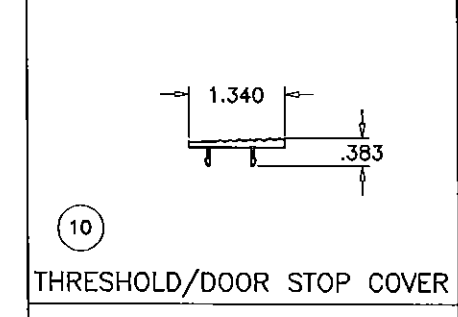
2.1 ALT. BOTTOM RAIL



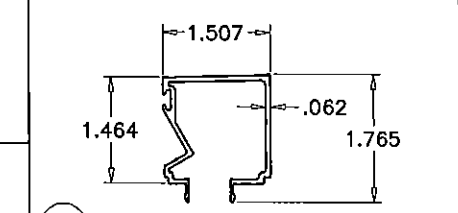
16 SHEAR BLOCK



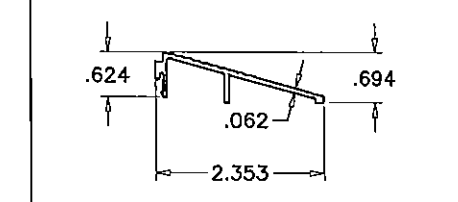
14 TRANSOM SASH



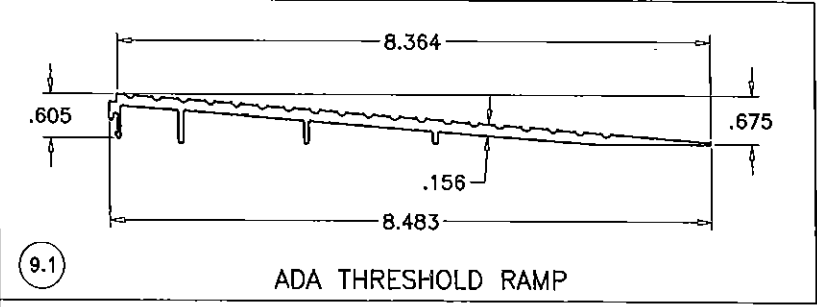
10 THRESHOLD/DOOR STOP COVER



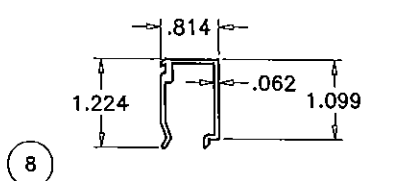
10.1 ALT. THRESHOLD COVER



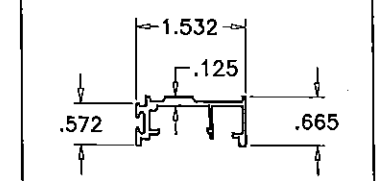
9 THRESHOLD RAMP



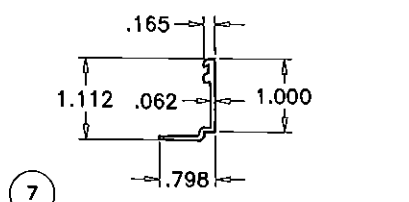
9.1 ADA THRESHOLD RAMP



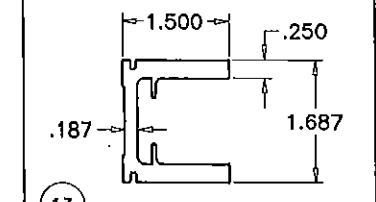
8 GLASS STOP (LAM. GLASS)



12 DOOR STOP



7 GLASS STOP (INSUL. LAM. GLASS)



13 STILE REINFORCEMENT

Engr: JAVAD AHMAD
 CIVIL
 FLA. PE # 70592
 C.A.N. 3538

JUN 23 2015

PRODUCT REVISED
 as complying with the Florida
 Building Code
 Acceptance No. 15-0423.04
 Expiration Date Sept. 11, 2017

By *Manuel Perez*
 Miami Dade Product Control

af c

AL-FAROOQ CORPORATION
 ENGINEERS & PRODUCT DEVELOPMENT
 1235 S.W. 87 AVE
 MIAMI, FLORIDA 33174
 TEL. (305) 264-8100 FAX. (305) 262-6978
 COMP-ANL\W12-30ENV

SERIES EW-350 OUTSWING ENTRANCE DOOR (L.M.I.)

ENVRALUM INDUSTRIES INC.
 5110 N.W. 72 AVENUE BLDG. C
 MIAMI, FL. 33166
 TEL. (305) 752-4411 FAX. (305) 406-3877

no	date	description
A	08.23.12	NO CHANGE THIS SHEET
B	12.19.14	GENERAL REVISION
C	05.11.15	REV. PER PER COMMENTS

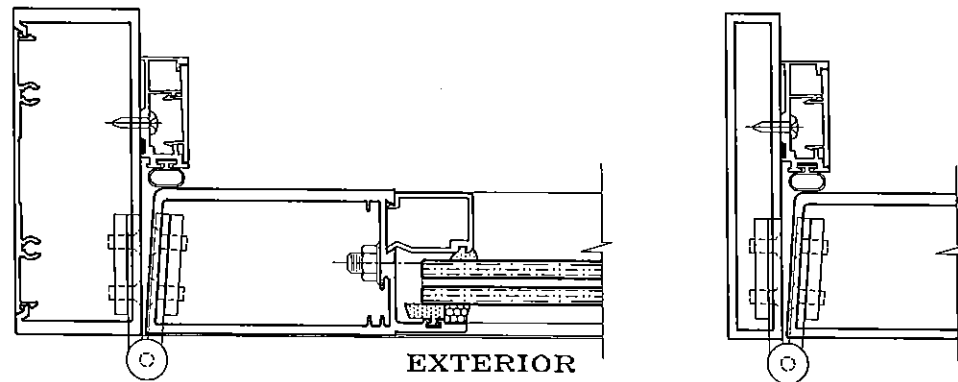
date: 08-08-12
 scale: 3/8" = 1"
 dr. by: HAMID
 chk. by:

drawing no.
W12-30
 sheet 8 of 10

HINGES:

OPTION #1:

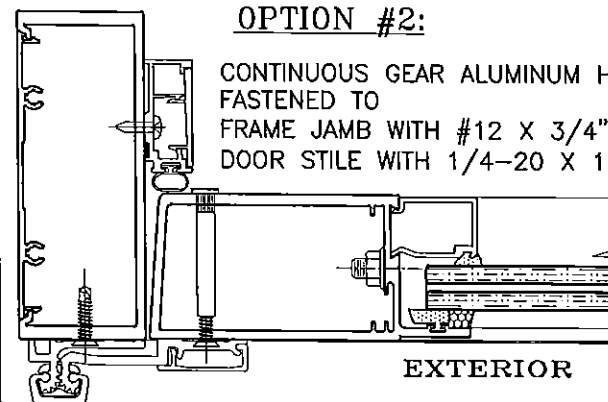
4" X 4-1/2" X .130" THK. ST. STEEL KNUCKLE HINGE SERIES 4001 BY 'REGENT HARDWARE' OR SERIES FBB 191 BY 'STANLEY SECURITY SOLUTIONS' OR SERIES TA2314/TA2714 BY 'MCKINNEY ASSA ABLOY' 3 PER LEAF
 TOP/BOTTOM HINGES AT 7" FROM EACH END
 CENTER HINGE AT MIDSPAN
 FASTENED TO
 FRAME JAMB WITH (4) 12-24 X 1/2" FH MS
 DOOR STILE WITH (4) 12-24 X 1/2" FH MS



EXTERIOR

OPTION #2:

CONTINUOUS GEAR ALUMINUM HINGE PEMKO-FS & SELECT SL-21
 FASTENED TO
 FRAME JAMB WITH #12 X 3/4" FH SCREWS AT 6" O.C.
 DOOR STILE WITH 1/4-20 X 1-1/4" FH MS WITH SEX BOLT AT 6" O.C.



EXTERIOR

ITEM NO.	PART NUMBER	QUANTITY	DESCRIPTION	MATERIAL	MANF./SUPPLIER/REMARKS
1	ENV-351	1/ LEAF	TOP RAIL	6063-T6	ENVIRALUM
2	ENV-352	1/ LEAF	BOTTOM RAIL (8" HIGH)	6063-T6	ENVIRALUM
2.1	ENV-3521	1/ LEAF	ALT. BOTTOM RAIL (10" HIGH)	6063-T6	ENVIRALUM
3	ENV-353	1/ LEAF	HINGE STILE	6063-T6	ENVIRALUM
4	ENV-354	1/ LEAF	LOCK STILE	6063-T6	ENVIRALUM
5	ENV-355	2/ DOOR	FRAME JAMB	6063-T6	ENVIRALUM
5A	-	2/ DOOR	ALT. FRAME JAMB	6063-T6	ENVIRALUM
6	ENV-356	1/ DOOR	FRAME HEAD	6063-T6	ENVIRALUM
7	ENV-357	4/ LITE	GLASS STOP (INSULATED GLASS)	6063-T6	ENVIRALUM
8	ENV-358	4/ LITE	GLASS STOP (LAMINATED GLASS)	6063-T6	ENVIRALUM
9	ENV-359	AS REQD.	THRESHOLD RAMP	6063-T6	ENVIRALUM
9.1	ENV-3520	AS REQD.	ADA THRESHOLD RAMP	6063-T6	ENVIRALUM
10	ENV-3510	AS REQD.	THRESHOLD/DOOR STOP COVER	6063-T6	ENVIRALUM
10.1	ENV-3518	AS REQD.	ALT. THRESHOLD COVER (HI-RISE)	6063-T6	ENVIRALUM
11	ENV-3511	1/ DOOR	THRESHOLD	6063-T6	ENVIRALUM
11.1	ENV-3519	1/ DOOR	ALT. THRESHOLD	6063-T6	ENVIRALUM
12	ENV-3512	3/ DOOR	DOOR STOP	6063-T6	ENVIRALUM
13	ENV-3513	AS REQD.	STILE REINFORCEMENT, REQD. FOR DOORS ABOVE 8 FT. HIGH	6063-T6	ENVIRALUM
14	ENV-3515	4/ TRANSOM	TRANSOM SASH	6063-T6	ENVIRALUM
15	ENV-ST2	AS REQD.	1" X 4-1/8" X 1" X 3/16" THK. CHANNEL	STEEL	ENVIRALUM
16	ENV-3516	1/ LEAF CORNER	SHEAR BLOCK	6063-T6	ENVIRALUM
17	ENV-GC01	2/ LEAF	GUIDE CHANNEL FOR TOP & BOTTOM PIN	6063-T6	ENVIRALUM
18	ENV-454	AS REQD.	FLAT SNAP, 3" LONG	6063-T6	ENVIRALUM
21	ENV-G04	AS REQD.	INTERIOR GASKET	EPDM	GLAZING RUBBER PRODUCTS
22	ENV-G06	AS REQD.	SPACER GASKET	EPDM	GLAZING RUBBER PRODUCTS
23	ENV-SB01	1/ QUARTER POINT	3/8" X 1/2" X 2" SETTING BLOCKS, DUROMETER 80±5	EPDM	GLAZING RUBBER PRODUCTS
24	ENV-SB02	1/ QUARTER POINT	3/8" X 1-1/4" X 2" SETTING BLOCKS, DUROMETER 80±5	EPDM	GLAZING RUBBER PRODUCTS
25	DOW 791	AS REQD.	GLAZING COMPOUND	SILICONE	DOW CORNING
26	GE SCS2000	AS REQD.	GLAZING COMPOUND	SILICONE	GE MOMENTIVE
27	#12 X 1-1/2	4/ CORNER	FRAME ASSEMBLY SCREWS	ST. STEEL	HWH SMS, AT 16" O.C.
28	#8 X 5/8"	AS REQD.	TRANSOM SASH SCREWS	ST. STEEL	AT 3" FROM ENDS & 12" O.C.
29	#8 X 5/8"	AS REQD.	DOOR STOP ASSEMBLY SCREWS, @ 3" FROM ENDS & 20" O.C.	ST. STEEL	HWH SMS
30	ENV-BP1	2/ HINGE	HINGE BACKING PLATE, 1-1/2" X 1/4" THK. X 8-3/8" LONG	ALUMINUM	-
31	-	3/ LEAF	4-1/2" X 4" BUTT HINGES	ST. STEEL	-
32	SL-21	1/ LEAF	CONT. GEAR HINGE	ALUMINUM	SELECT PRODUCTS LTD.
32A	PEMKO-FS	1/ LEAF	CONT. GEAR HINGE	ALUMINUM	PEMKO
33	1/4-20 X 1"	10/ LEAF	CORNER BLOCK ASSEMBLY	ST. STEEL	HEX HEAD BOLT W/ WASHER
34	ENV-G01	AS REQD.	FIXED INTERIOR GASKET	EPDM	GLAZING RUBBER PRODUCTS
37	ENV-WP1	AS REQD.	WOOL PILE W'STRIPPING	TRILOBAL YARN	ULTRAFAB
38	ENV-WP2	AS REQD.	WOOL PILE W'STRIPPING	TRILOBAL YARN	ULTRAFAB
39	ENV-BG1	AS REQD.	BULB W'STRIPPING, (.475 BULB W/ FLAP X .270 BK.)	EPDM	ULTRAFAB
40	ENV-3518	AS REQD.	DRIP CAP	ALUMINUM	PEMKO
40A	#8 X 5/8"	AS REQD.	DRIP CAP FASTENERS, AT 3" FROM ENDS & 6" O.C.	ST. STEEL	HWH SELF DRILLING SCREWS
41	ENV-3512	AS REQD.	DOOR SWEEP (TOP)	ALUMINUM	PEMKO
41A	#8 X 1/2"	AS REQD.	DOOR SWEEP FASTENERS, AT 3" FROM ENDS & 6" O.C.	ST. STEEL	FH SELF DRILLING SCREWS
42	ENV-3523	AS REQD.	DOOR SWEEP (BOTTOM)	ALUMINUM	PEMKO
42A	#8 X 3/4"	AS REQD.	DOOR SWEEP FASTENERS, AT 3" FROM ENDS & 6" O.C.	ST. STEEL	HH SELF DRILLING SCREWS
43	ENV-WF1	AS REQD.	WATER FLAP	EPDM	ULTRAFAB

SEALANTS:

ALL FRAME CORNERS, JOINTS, MULLION SEAMS AND PERIMETER OF GLAZING BEAD TO FRAME SEALED WITH SILICONE SEALANT.

Engr: JAVAD AHMAD
 CIVIL
 FLA. PE # 70592
 C.A.N. 3538

 JUN 23 2015

PRODUCT REVISED
 as complying with the Florida
 Building Code
 Acceptance No 15-0423.04
 Expiration Date Sept. 17, 2017
 By
 Miami Dade Product Control

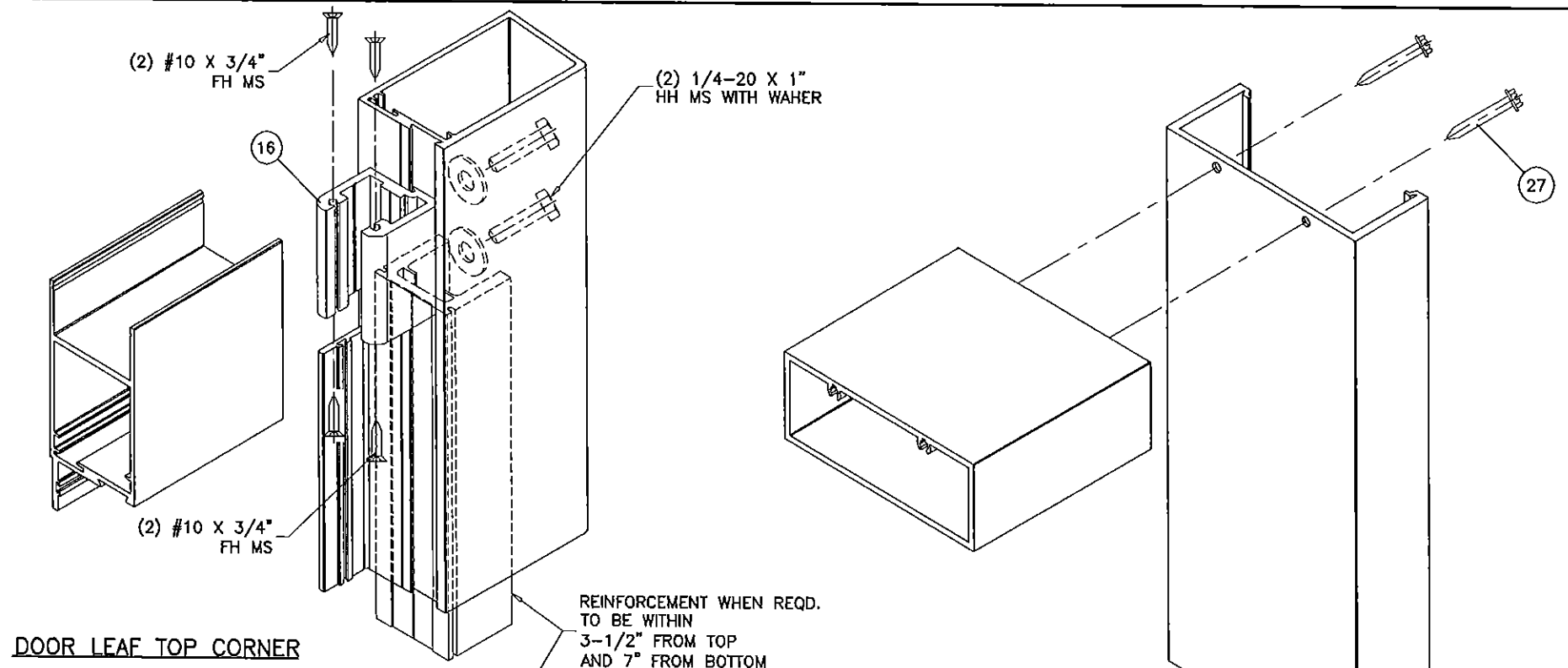
af c
AL-FAROOQ CORPORATION
 ENGINEERS & PRODUCT DEVELOPMENT
 1235 S.W. 87 AVE
 MIAMI, FLORIDA 33174
 TEL. (305) 264-8100 FAX. (305) 262-6978
 COMP-ANL\W12-30ENV

SERIES ENV-350 OUTSWING ENTRANCE DOOR (L.M.I.)
ENVIRALUM INDUSTRIES INC.
 5110 N.W. 72 AVENUE BLDG. C
 MIAMI, FL. 33166
 TEL (305) 752-4411 FAX. (305) 406-3877

NO	DATE	DESCRIPTION
A	08.23.12	REV. PER PER COMMENTS
B	12.19.14	GENERAL REVISION
C	05.11.15	REV. PER PER COMMENTS

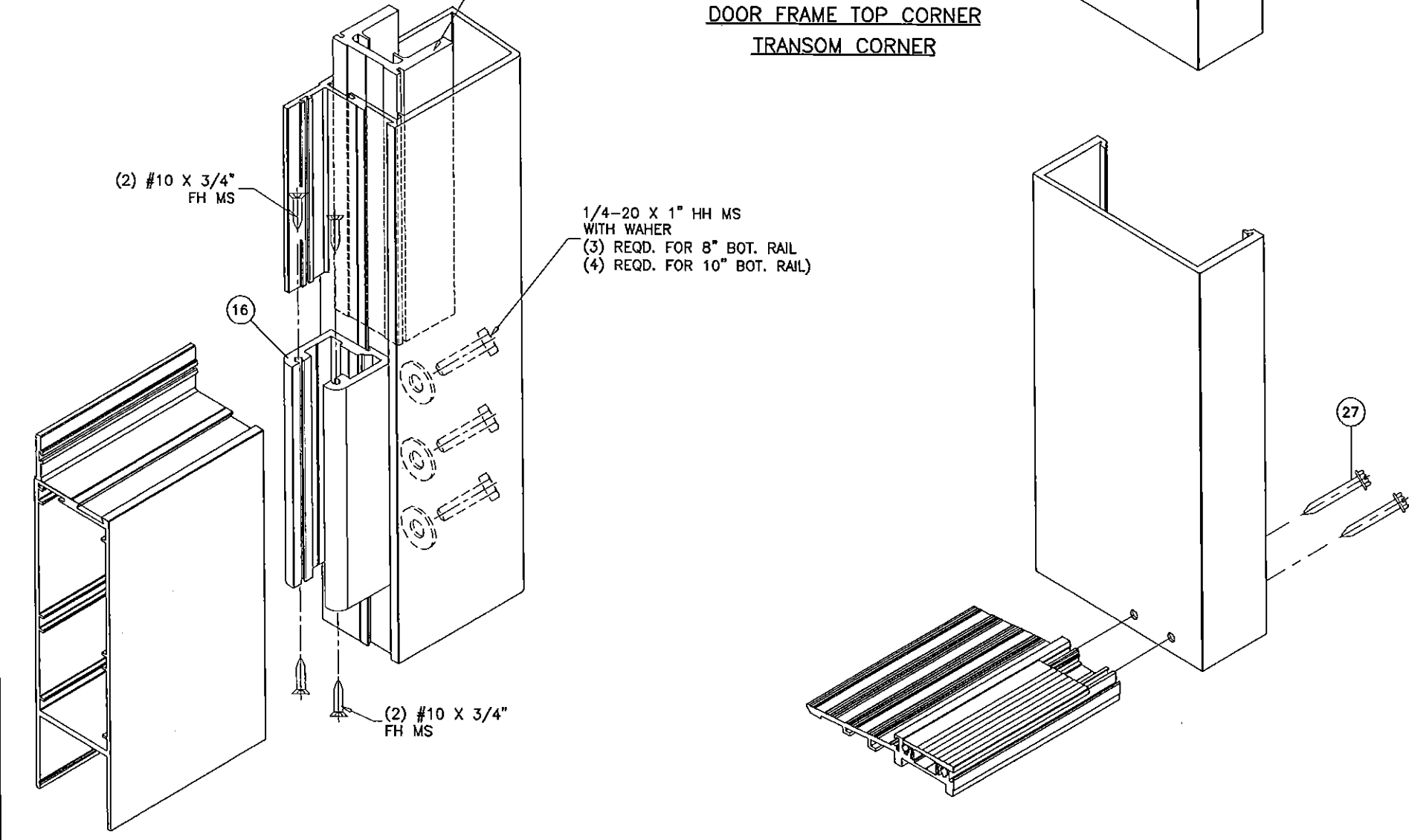
date: 06-08-12
 scale: 3/8" = 1"
 dr. by: HAMID
 chk. by:

drawing no.
W12-30
 sheet 9 of 10



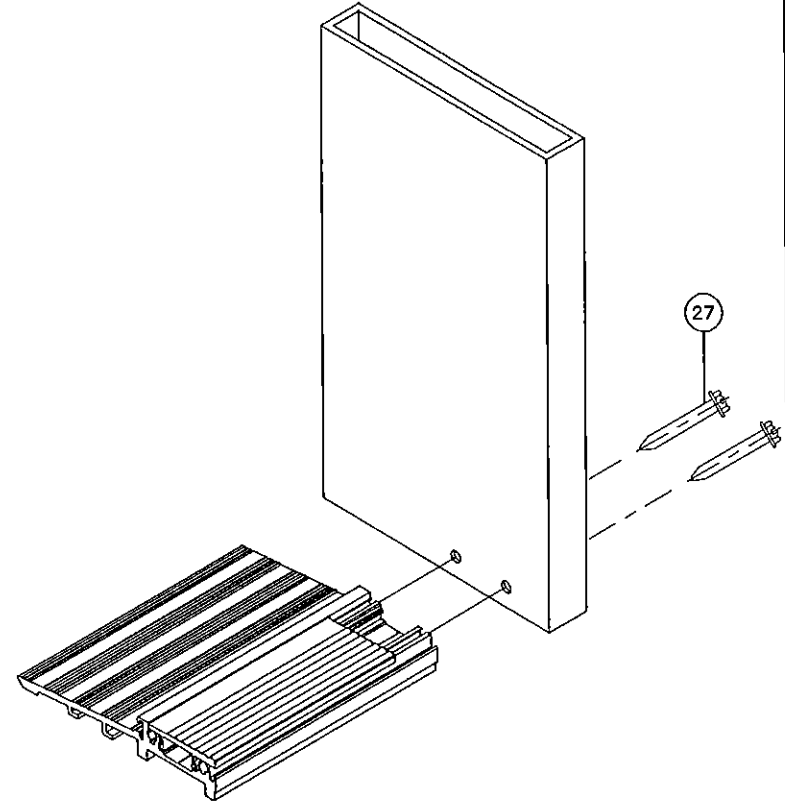
DOOR LEAF TOP CORNER

DOOR FRAME TOP CORNER
TRANSOM CORNER



DOOR LEAF BOTTOM CORNER

DOOR FRAME BOTTOM CORNER



Engr: JAVAD AHMAD
CML
FLA. PE # 70592
C.A.N. 3538

JAVAD AHMAD
JUN 23 2015

PRODUCT REVISED
as complying with the Florida
Building Code
Acceptance No 15-0423.04
Expiration Date Sept. 17, 2017

By *Manuel Perez*
Miami Dade Product Control

afc
AL-FAROOQ CORPORATION
ENGINEERS & PRODUCT DEVELOPMENT
1235 S.W. 87 AVE
MIAMI, FLORIDA 33174
TEL. (305) 264-8100 FAX. (305) 262-6978
COMP-ANL W12-30ENV

SERIES ENV-350 OUTSWING ENTRANCE DOOR (L.M.I.)
ENVIRALUM INDUSTRIES INC.
5110 N.W. 72 AVENUE BLDG. C
MIAMI, FL. 33166
TEL. (305) 752-4411 FAX. (305) 406-3877

revisions:		
NO	date	description
A	08.23.12	REV. PER COMMENTS
B	12.19.14	GENERAL REVISION
C	05.11.15	REV. PER COMMENTS

date: 06-08-12	scale: 3/8" = 1"
dr. by: HAMID	chk. by:

drawing no.
W12-30
sheet 10 of 10